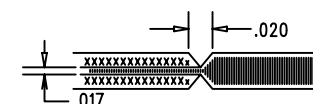


REVISIONS			
REV	DESCRIPTION	APPR	DATE
A	PROTOTYPE RELEASE		

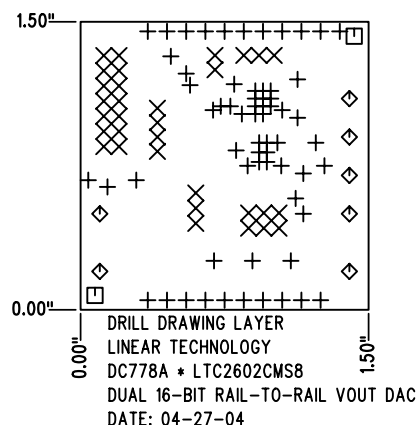
SIZE	QTY	SYM	PLTD
0.015	64	+	PLTD
0.035	32	X	PLTD
0.07	2	□	NPLTD
0.064	7	◇	PLTD

NOTES: UNLESS OTHERWISE SPECIFIED


1. FAB PER IPC-A-600
2. MATERIAL: EPOXY FIBERGLASS, NEMA GRADE FR-4
FINISHED THICKNESS TO BE 0.062" +/- .005"
TOTAL OF 4 LAYERS WITH 2 OZ. CU ON THE
OUTER LAYERS AND 1 OZ. CU ON THE INNER LAYERS.
FLAMABILITY RATING: 94 V-0 MINIMUM .
3. SIZE: CUT TO DIMENSIONS AND TOLERANCES SHOWN.
0.00" ARE PRIMARY DATUMS.
4. DRILLING: DRILL HOLES PER SCHEDULE. PLATE THROUGH
HOLES WITH COPPER, 0.001" THICK MIN.
ALL HOLE SIZES ARE SPECIFIED AFTER PLATING.
HOLE LOCATION TOLERANCES ARE +/-0.003"
IN RELATION TO CENTER
5. FINISH: SMOBC USING LPI BOTH SIDES, COLOR GREEN.
WHITE TIN IMMERSION (OMIKRON).
FOR SILKSCREEN: USE WHITE NON-CONDUCTIVE INK.
6. DO NOT ALTER ARTWORK e.g. TO ADD LOGO OR DATE CODE.
7. SCORING FOR PANELIZED PCB:



8. PLEASE LOOK AT THE README FILE FOR THE OTHER REQUIREMENTS.



SHOWN FROM COMPONENT SIDE

APPROVALS			 <div> 1630 MCCATHY BLVD MILPITAS, CA 95035 PH: (408)432-1900 LTC CONFIDENTIAL- FOR CUSTOMER USE ONLY </div>	
	INIT	DATE		
DRAWN			TITLE: FABRICATION DRAWING DUAL 16-BIT RAIL-TO-RAIL VOUT DAC	
CHECK				
DESIGN	KIM T.	04-27-04		
ENGR	MARK T.	04-27-04		
			SIZE	REV.
			A	A
SCALE = NONE			DES- 0000	SHT 1 of 1