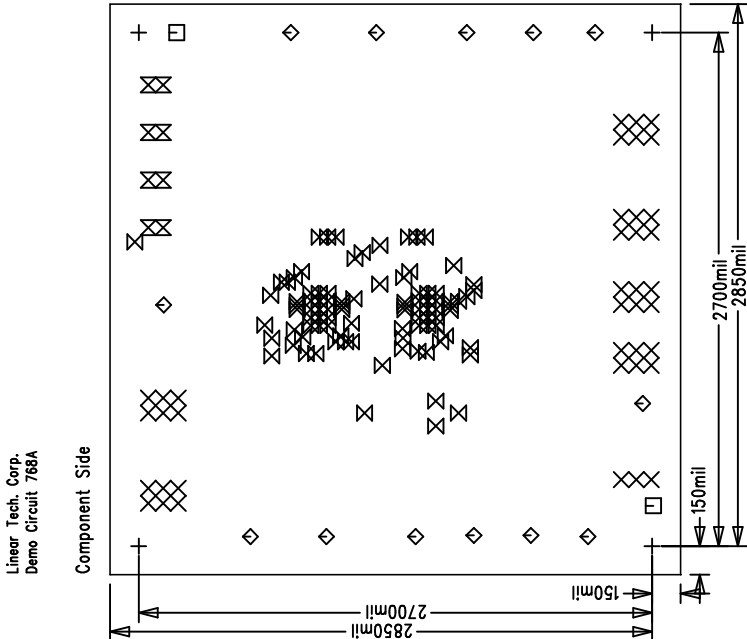
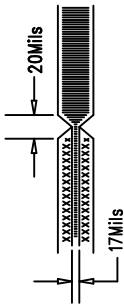



REVISIONS		
REV	APPR	DATE

NOTES: UNLESS OTHERWISE SPECIFIED:

- ARTWORK P/N DC768A Rev3. 6-LAYERS.
- FAB PER IPC-A-600
- MATERIAL: EPOXY FIBERGLASS, NEMA GRADE FR-4
.062 +/- .005 INCH THICKNESS WITH 2 OZ.
COPPER FINISH ON TWO OUTER LAYERS AND
1 OZ. COPPER ON FOUR INTERNAL LAYERS.
FLAMABILITY RATING: 94 V-2 MINIMUM .
- SIZE: CUT TO DIMENSIONS AND TOLERANCES SHOWN.
0.00 ARE PRIMARY DATUMS.
- BOARD: SELECTIVE PLATED BOARD. SOLDER
MASK OVER BARE COPPER, COLOR, GREEN LPI.
WHITE TIN IMMERSION (OMIKRON) BOTH SIDES.
SILKSCREEN COMPONENT SIDE WITH WHITE NON-
CONDUCTIVE INK.
PLATE THRU ALL HOLES WITH COPPER
MIN. PLATING THICKNESS: 1 OZ. EXCEPT
WHERE PLATING NOT REQUIRED
- DRILL: ALL HOLES SHALL BE DRILLED +/-3mil
WITH RESPECT TO CTR. OF DRILLED PAD.
ALL HOLES FINISHED SIZE AFTER PLATING.
- DROP ALL UNUSED PADS ON INNER LAYERS.
- DO NOT ALTER ARTWORK e.g. TO ADD LOGO OR DATE CODE.
- SCORING:



Fabrication Drawing

APPROVALS		 1630 McCarthy Blvd. Milpitas, CA 95035 PH: (408)432-1900	TITLE: LTC3415EUHF Dual Phase 15A Monolithic Synchronous Buck Converter	SIZE		REV. 3		DES-230667 SHT 1 of 1

SIZE	QTY	SYM	PLATED	TOL
187	4	+	YES	+/-3mil
31	39	X	YES	+/-3mil
70	2	□	NO	+/-3mil
94	13	◇	YES	+/-3mil
10	93	⊗	YES	+/-3mil
35	8	⊗	YES	+/-3mil