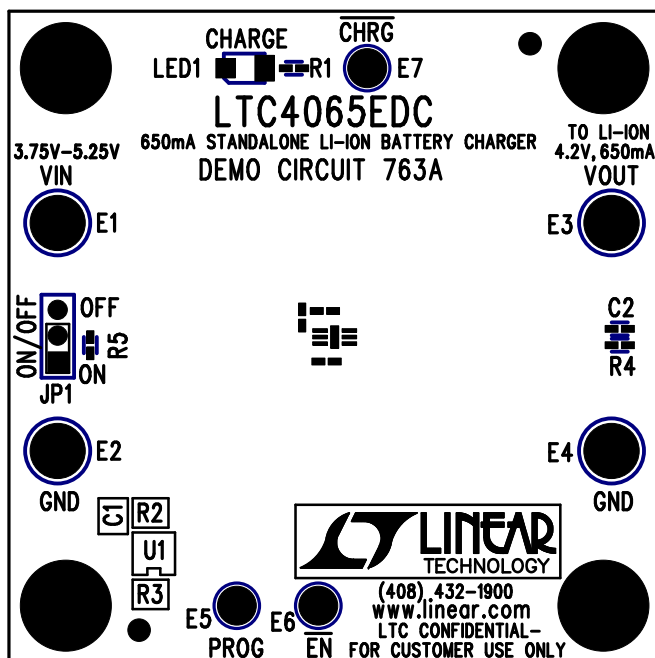


REVISIONS			
REV	DESCRIPTION	APPR	DATE
A	PROTOTYPE RELEASE		



TOP SILKSCREEN

LINEAR TECHNOLOGY

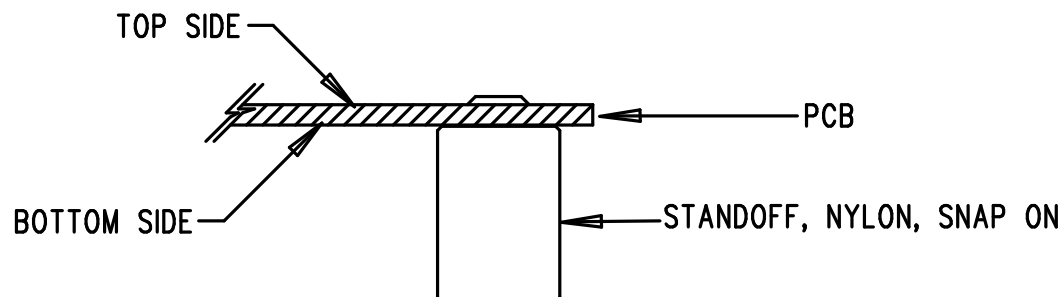
DC763A-LTC4065EDC

650mA STANDALONE LI-ION BATTERY CHARGER

DATE: 08-09-05

## NOTES: UNLESS OTHERWISE SPECIFIED

1. WORKMANSHIP SHALL BE IN ACCORDANCE WITH IPC-A-610.
2. INSTALL SHUNT ON JP1 PIN 1 AND 2.
3. PARTS TO OMIT WILL BE SPECIFIED ON THE BILLS OF MATERIAL. LOCATIONS OF OMITTED PARTS SHALL BE FREE OF SOLDER. MASK THE SOLDER STENCIL WHERE SMT PARTS ARE OMITTED.
4. DEPANELIZE BOARDS AFTER ASSEMBLY AND ROUTE-OUT THE BREAKOUT TABS ON FOUR SIDES OF THE BOARD EDGE.
5. ASSY PROCESSES SHALL INCLUDE: REFLOW SOLDER TOP SIDE SMD.
6. INSTALL 4 STANDOFFS AT 4 CORNERS AS SHOWN BELOW:



## APPROVALS

	INIT	DATE
DRAWN		
CHECK		
DESIGN	KIM T.	08-09-05
ENGR	KEVIN H.	08-09-05

SCALE = NONE



1630 MCCARTHY BLVD  
MILPITAS, CA 95035  
PH: (408)432-1900  
LTC CONFIDENTIAL-  
FOR CUSTOMER USE ONLY

TITLE: ASSEMBLY DRAWING

650mA STANDALONE LI-ION BATTERY CHARGER

SIZE A	DEMO DC763A-LTC4065EDC	REV. A
-----------	---------------------------	-----------

DES- 0000

SHT 1 of 1