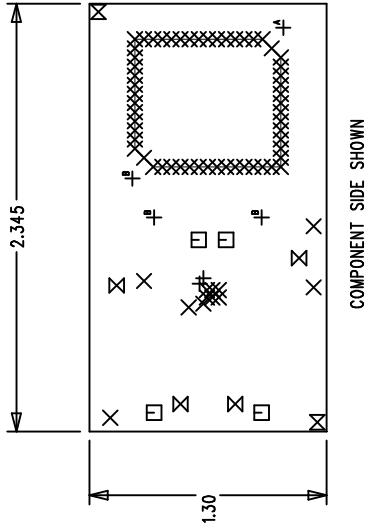
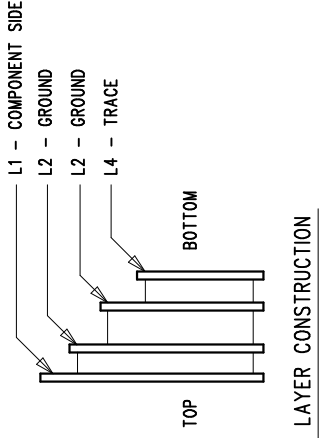


DWG NO		DC762A		SH	1	REV	3
REVISION HISTORY							
ECO	REV	DESCRIPTION		DATE		APPROVED	
	3	PROD		03/22/05			



NOTES: UNLESS OTHERWISE SPECIFIED,

- ARTWORK P/N DC762A REV 3.
- FAB PER IPC-A-600
- MATERIAL: EPOXY FIBERGLASS, NEMA GRADE FR-4 .062 +/- .005 INCH THICKNESS WITH 2 OZ. COPPER FINISH ON TWO OUTER LAYERS AND 1 OZ. COPPER ON TWO INTERNAL LAYERS. FLAMABILITY RATING: 94 V-2 MINIMUM.
- SIZE: CUT TO DIMENSIONS AND TOLERANCES SHOWN.
- BOARD: SELECTIVE PLATED BOARD. SOLDER MASK OVER BARE COPPER, COLOR, GREEN LPI. WHITE TIN IMMERSION (OMIKRON) BOTH SIDES. SILKSCREEN COMPONENT SIDE WITH WHITE NON-CONDUCTIVE INK. PLATE THRU ALL HOLES WITH COPPER MIN. PLATING THICKNESS: 1 OZ. EXCEPT WHERE PLATING NOT REQUIRED
- DRILL: ALL HOLES SHALL BE DRILLED +/- .003 INCH WITH RESPECT TO CTR. OF DRILLED PAD. ALL HOLES FINISHED SIZE AFTER PLATING.
- DROP ALL UNUSED PADS ON INNER LAYERS.
- DO NOT ALTER ARTWORK e.g. TO ADD LOGO OR DATE CODE.

SIZE	QTY	SYM	PLTD	TOL
8	2	+	YES	+/-0.003
10	68	X	YES	+/-0.003
40	4	□	YES	+/-0.003
64	4	⊗	YES	+/-0.005
70	2	⊗	NO	+/-0.005
125	1	⊕	YES	+/-0.01
125	3	⊕	NO	+/-0.01

UNLESS OTHERWISE SPECIFIED DIMENSIONS ARE IN INCHES TOLERANCES ON ANGLE ± 1° 2 PLACE ± .01 3 PLACE ± .005 INTERPRET DIM AND TOL PER ASME Y14.5M - 1994		CONTRACT NO.		LINEAR TECHNOLOGY 1630 McCarthy Blvd. Milpitas, CA 95035 Phone: (408)432-1900 Fax: (408)434-0507	
THIRD ANGLE PROJECTION	APPROVALS	DATE	TITLE		
	DRAWN MEI	02/02/04	FAB, LTC3490EDD, 350mA, 1W WHITE LED DRIVER		
DO NOT SCALE DRAWING	CHECKED		SIZE	CAGE CODE	DWG NO.
	APPROVED		A		DC762A
	DESIGNED BY		SCALE	1/1	FILENAME: 762A-3.PCB
			SHEET	1	OF 1