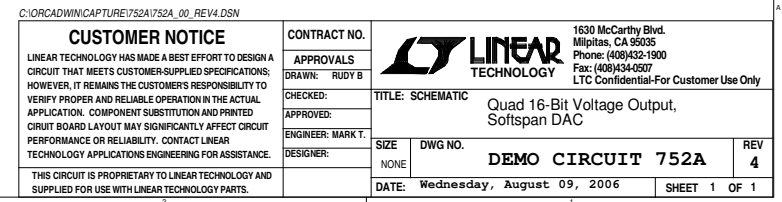


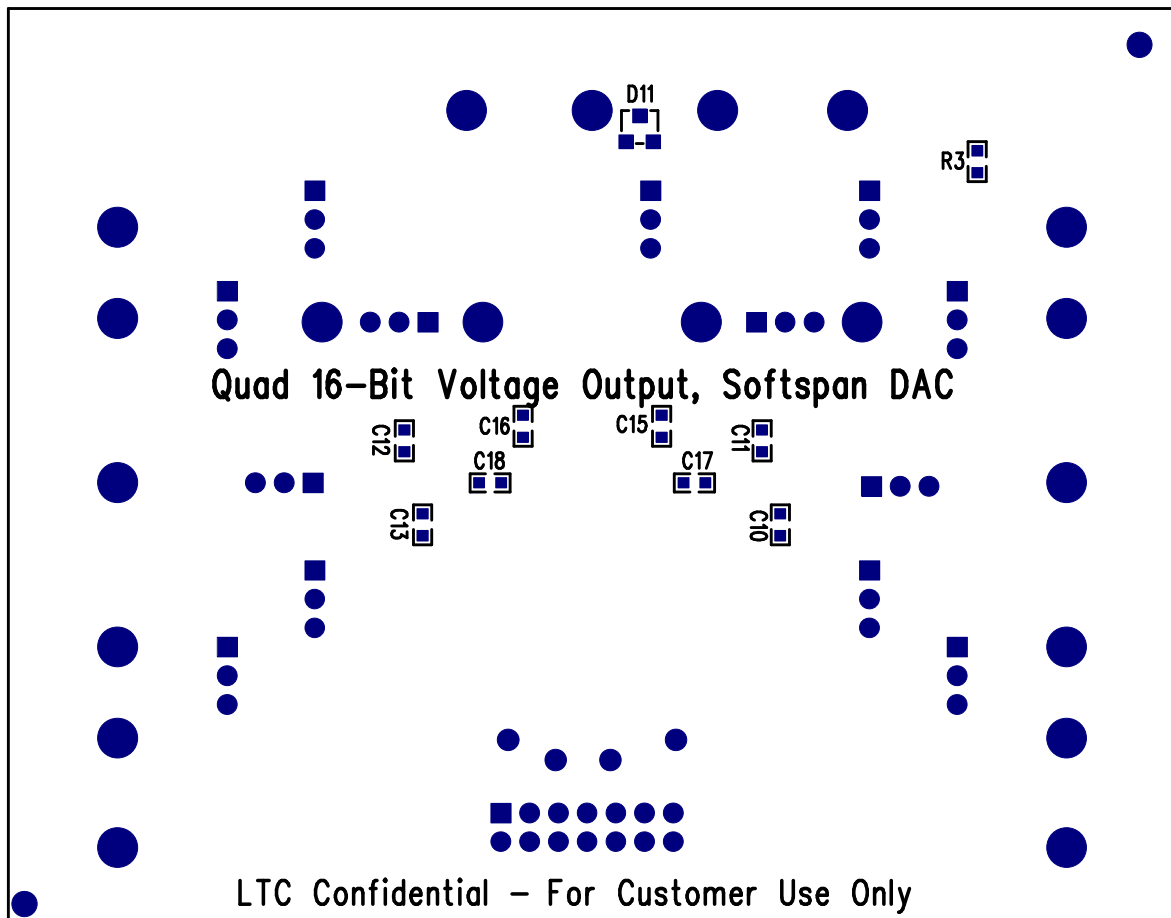
	U6
DC752A-A	"Future Use"
DC752A-B	LTC2704CGW-16




Silkscreen Bottom

Solder Side

Linear Tech. Corp.  
Demo Circuit 752A

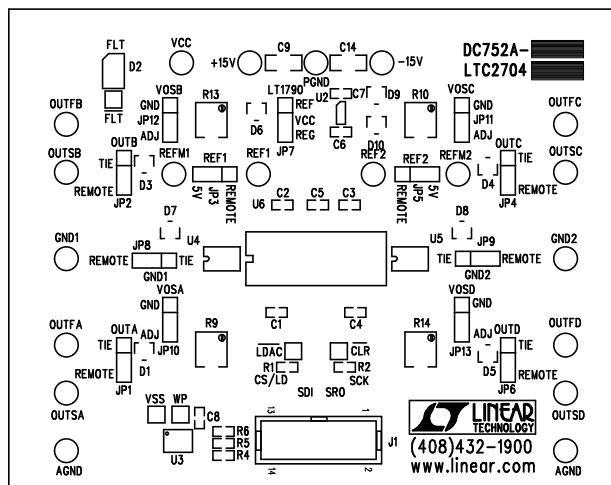


## Assembly, Bottom Drawing

<b>APPROVALS</b>			 <b>LINEAR TECHNOLOGY</b>		1630 McCarthy Blvd. Milpitas, CA 95035 PH: (408)432-1900	
	INIT	DATE				
DRAWN			<b>TITLE:</b> Quad 16-Bit Voltage Output, Softspan DAC			
CHECK						
DESIGN	Rudy B		<b>SIZE</b> NONE <b>Demo Circuit 752A</b> <b>REV. 4</b>			
ENGR	Mark T					
			<b>SCALE = NONE</b> <b>DES-250061</b> <b>SHT 2 of 2</b>			

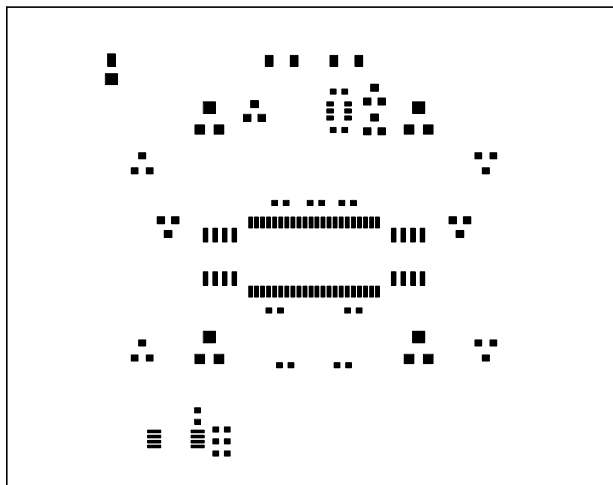


Linear Tech. Corp.  
Demo Circuit 752A  
Silkscreen Top

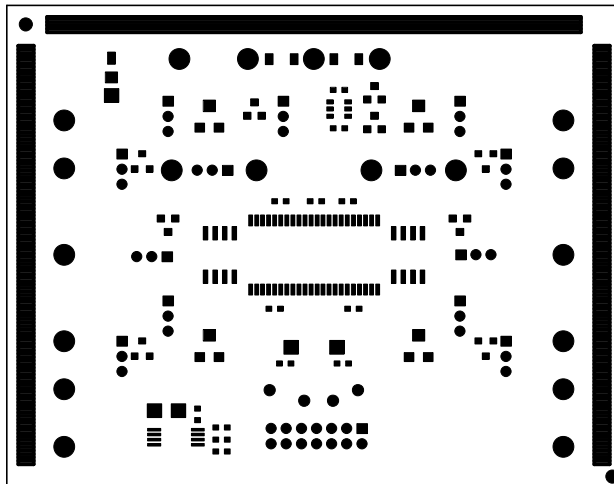


Linear Tech. Corp.  
Demo Circuit 752A

PasteMask Top

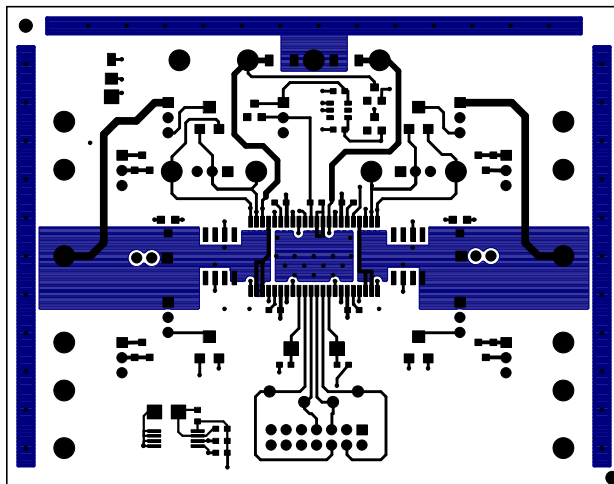


Linear Tech. Corp. SolderMask Top  
Demo Circuit 752A

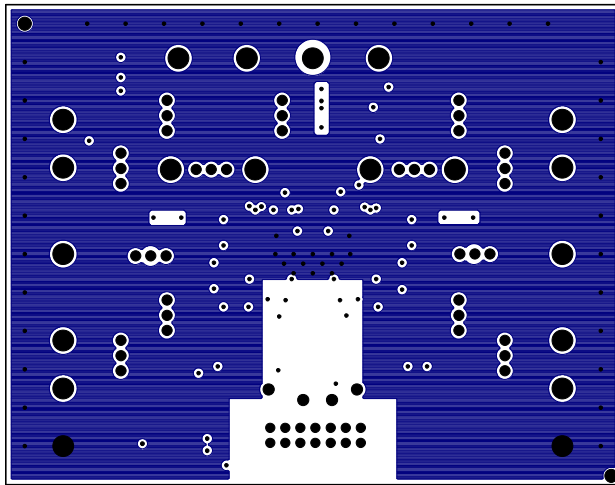


Linear Tech. Corp.  
Demo Circuit 752A

Component Side



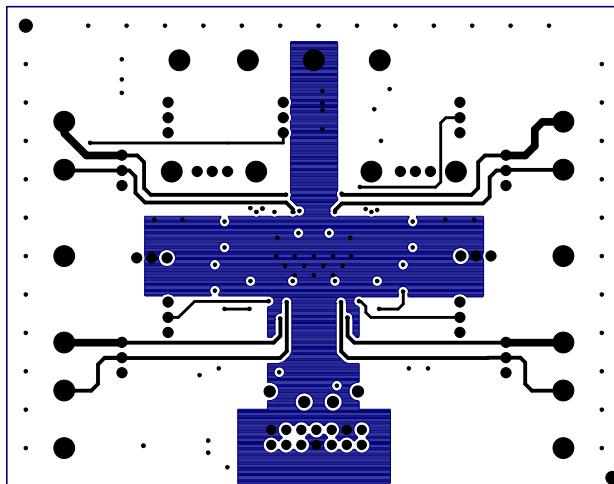
Linear Tech. Corp.  
Demo Circuit 752A  
Layer2



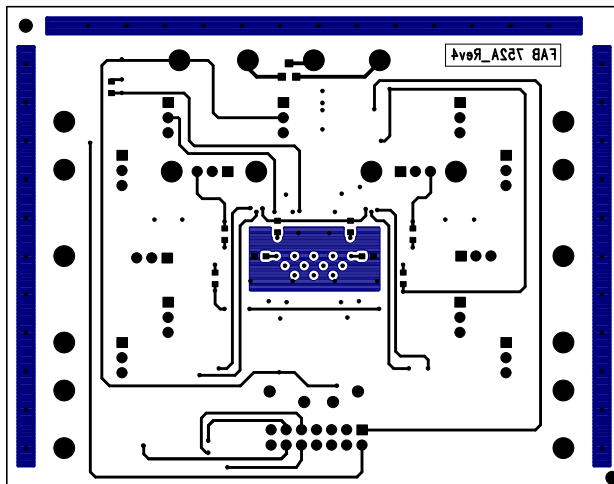


Linear Tech. Corp.  
Demo Circuit 752A

Layer3

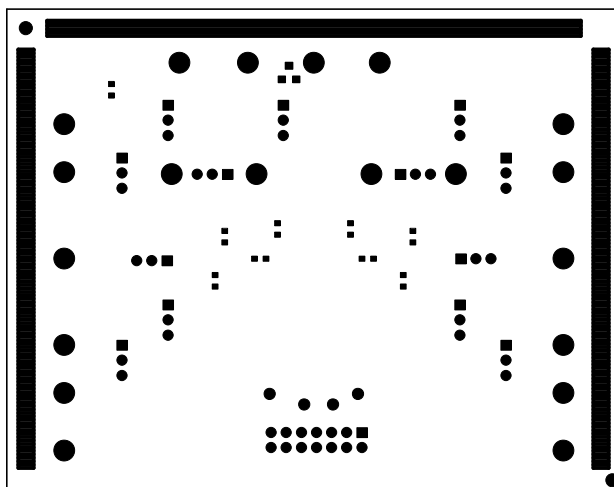


Linear Tech. Corp.  
Demo Circuit 752A Solder Side



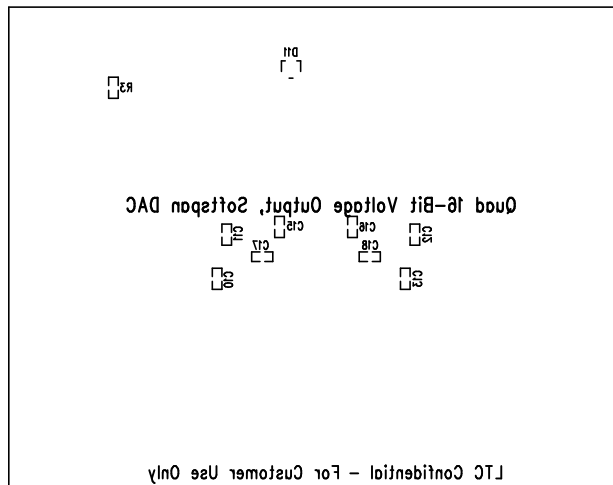
Linear Tech. Corp.  
Demo Circuit 752A

SolderMask Bottom

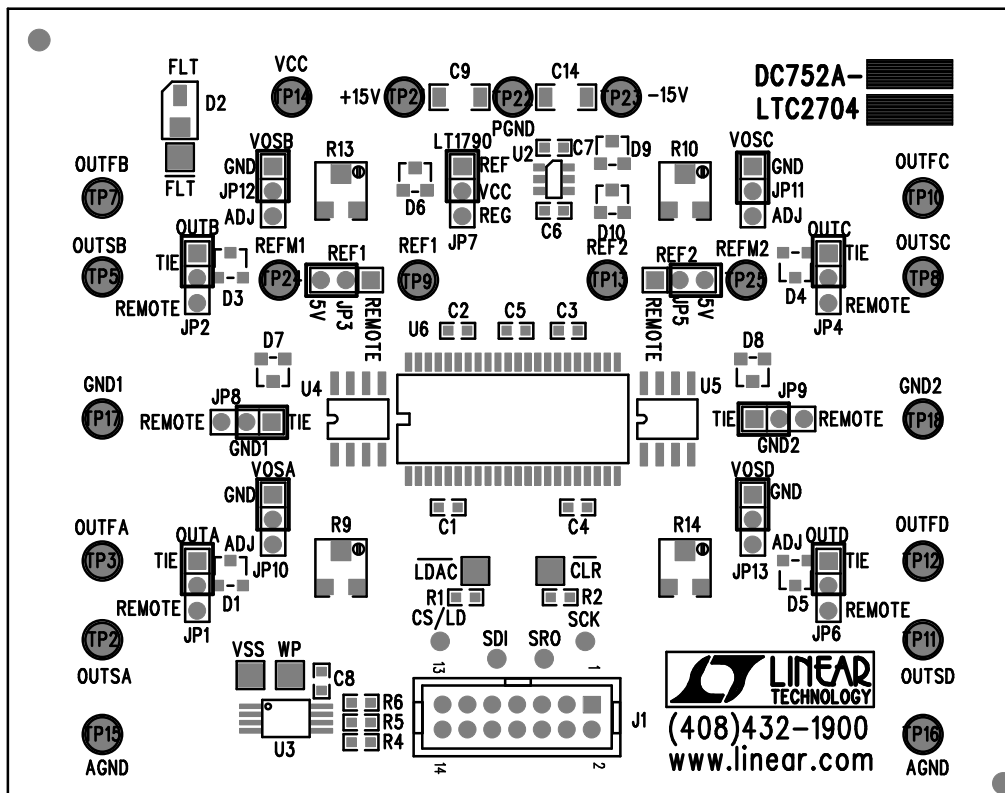


Linear Tech. Corp.  
Demo Circuit 752A

Silkscreen Bottom




Linear Tech. Corp.  
Demo Circuit 752A  
Silkscreen Top



## BOARD ASSEMBLY

	U6
DC752A-A	"Future Use"
DC752A-B	LTC2704CGW-16

## Assembly, Top Drawing

APPROVALS			 <b>LINEAR TECHNOLOGY</b> 1630 McCarthy Blvd. Milpitas, CA 95035 PH: (408)432-1900		
	INIT	DATE			
DRAWN			<b>TITLE:</b> Quad 16-Bit Voltage Output, Softspan DAC		
CHECK					
DESIGN	RmB				
ENGR	Mark T				
			<b>SIZE</b> NONE <b>Demo Circuit 752A</b> <b>REV.</b> 4		
SCALE = NONE			DES-250061		SHT 1 of 1

Linear Tech. Corp.  
Demo Circuit 752A

PasteMask Bottom

