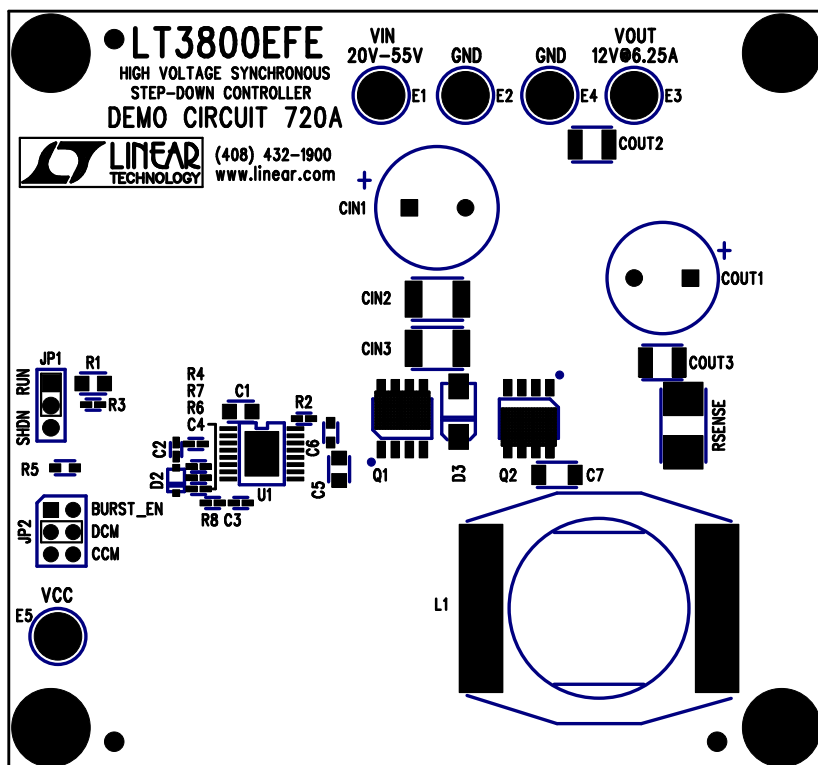
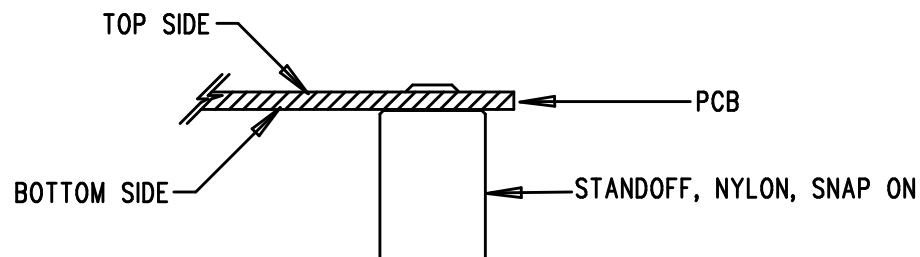



REVISIONS			
REV	DESCRIPTION	APPR	DATE
A	PROTOTYPE RELEASE		



## NOTES: UNLESS OTHERWISE SPECIFIED

1. WORKMANSHIP SHALL BE IN ACCORDANCE WITH IPC-A-610.
2. INSTALL SHUNT ON JP1 PIN 1 AND 2, JP2 PIN 3 AND 4.
3. PARTS TO OMIT WILL BE SPECIFIED ON THE BILLS OF MATERIAL. LOCATIONS OF OMITTED PARTS SHALL BE FREE OF SOLDER. MASK THE SOLDER STENCIL WHERE SMT PARTS ARE OMITTED.
4. DEPANELIZE BOARDS AFTER ASSEMBLY AND ROUTE-OUT THE BREAKOUT TABS ON FOUR SIDES OF THE BOARD EDGE.
5. ASSY PROCESSES SHALL INCLUDE: REFLOW SOLDER TOP SIDE SMD.
6. INSTALL 4 STANDOFFS AT 4 CORNERS AS SHOWN BELOW:



APPROVALS			 <b>LINEAR TECHNOLOGY</b>		1630 McCarthy Blvd. Milpitas, CA 95035 PH: (408)432-1900
	INIT	DATE			
DRAWN			<b>TITLE: TOP ASSEMBLY DRAWING</b> <b>HIGH VOLTAGE SYNCHRONOUS STEP-DOWN CONTROLLER</b>		
CHECK					
DESIGN	KIM T.	03-16-05	<b>SIZE</b> A <b>DEMO</b> DC720A-2 * LT3800EFE <b>REV.</b> A		
ENGR	DAVID C.	03-16-05			
			<b>DES- 0000</b>		
SCALE = NONE					SHT 1 of 2