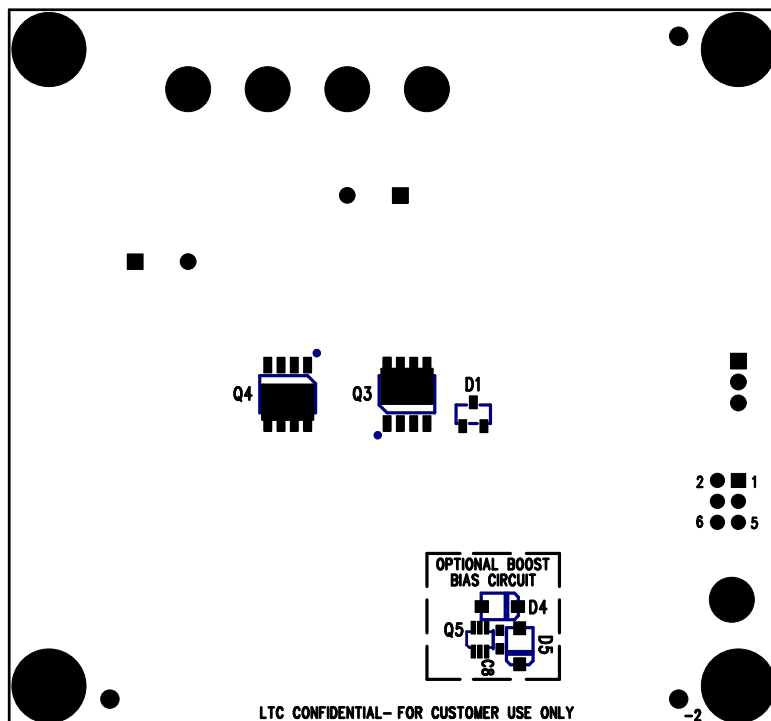
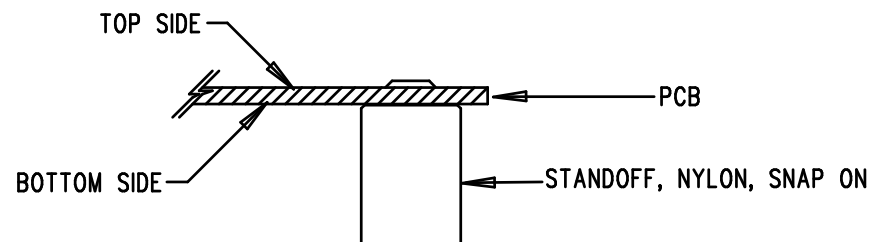


REVISIONS			
REV	DESCRIPTION	APPR	DATE
A	PROTOTYPE RELEASE		



NOTES: UNLESS OTHERWISE SPECIFIED

1. WORKMANSHIP SHALL BE IN ACCORDANCE WITH IPC-A-610.
2. INSTALL SHUNT ON JP1 PIN 1 AND 2, JP2 PIN 3 AND 4.
3. PARTS TO OMIT WILL BE SPECIFIED ON THE BILLS OF MATERIAL. LOCATIONS OF OMITTED PARTS SHALL BE FREE OF SOLDER. MASK THE SOLDER STENCIL WHERE SMT PARTS ARE OMITTED.
4. DEPANELIZE BOARDS AFTER ASSEMBLY AND ROUTE-OUT THE BREAKOUT TABS ON FOUR SIDES OF THE BOARD EDGE.
5. ASSY PROCESSES SHALL INCLUDE: REFLOW SOLDER TOP SIDE SMD.
6. INSTALL 4 STANDOFFS AT 4 CORNERS AS SHOWN BELOW:



APPROVALS

	INIT	DATE
DRAWN		
CHECK		
DESIGN	KIM T.	03-16-05
ENGR	DAVID C.	03-16-05

LINEAR TECHNOLOGY 1630 McCarthy Blvd.
Milpitas, CA 95035
PH: (408)432-1900

TITLE: BOTTOM ASSEMBLY DRAWING

HIGH VOLTAGE SYNCHRONOUS STEP-DOWN CONTROLLER

SIZE	DEMO	REV.
A	DC720A-2 * LT3800EFE	A

SCALE = NONE

DES- 0000

SHT 2 of 2