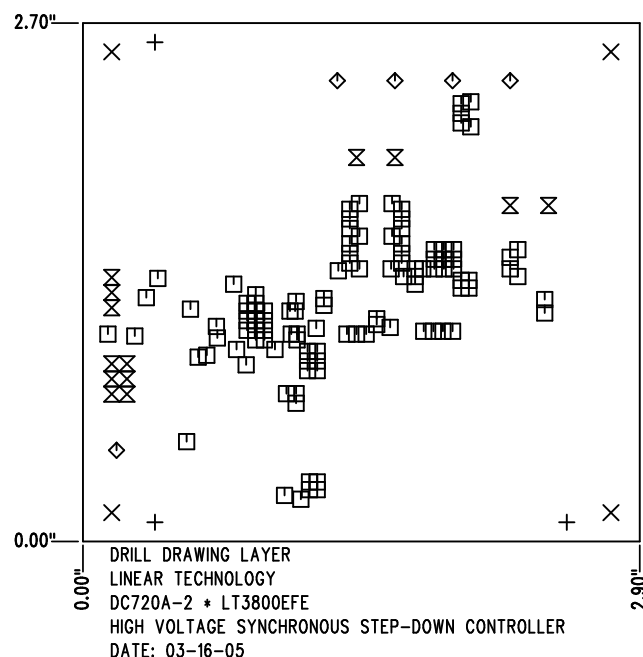


REVISIONS			
REV	DESCRIPTION	APPR	DATE
A	PROTOTYPE RELEASE		

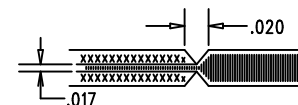



SHOWN FROM COMPONENT SIDE

SIZE	QTY	SYM	PLTD	TOL
0.07	3	+	NO	+/-0.003"
0.19	4	X	YES	+/-0.003"
0.015	110	□	YES	+/-0.003"
0.094	5	◇	YES	+/-0.003"
0.035	13	⊗	YES	+/-0.003"

### NOTES: UNLESS OTHERWISE SPECIFIED

- FAB PER IPC-A-600
- MATERIAL: EPOXY FIBERGLASS, NEMA GRADE FR-4  
FINISHED THICKNESS TO BE 0.062" +/- 0.006"  
TOTAL OF 4 LAYERS WITH 4 OZ. COPPER ON THE OUTER LAYERS AND 2 OZ. COPPER ON THE INTERNAL LAYERS.  
FLAMABILITY RATING: 94 V-0 MINIMUM .
- FINISH: SMOBC USING LPI BOTH SIDES, COLOR GREEN.  
WHITE TIN IMMERSION (OMIKRON).  
FOR SILKSCREEN: USE WHITE NON-CONDUCTIVE INK.
- DRILLING: DRILL HOLES PER SCHEDULE. ALL PLATED THROUGH HOLES WITH COPPER, 0.001" MIN. / 0.0015" MAX. COPPER PLATE  
ALL HOLE SIZES ARE SPECIFIED AFTER PLATING. HOLE LOCATION TOLERANCES ARE +/-0.01" IN RELATION TO CENTER
- DO NOT ALTER ARTWORK e.g. TO ADD LOGO OR DATE CODE.
- SCORING FOR PANELIZED PCB:



APPROVALS			 <b>LINEAR TECHNOLOGY</b> 1630 McCarthy Blvd. Milpitas, CA 95035 PH: (408)432-1900	
DRAWN	INIT	DATE		
CHECK			TITLE: FABRICATION DRAWING	
DESIGN	KIM T.	03-16-05	HIGH VOLTAGE SYNCHRONOUS STEP-DOWN CONTROLLER	
ENGR	DAVID C.	03-16-05	SIZE A	REV. A
			DES- 0000	SHT 1 of 1