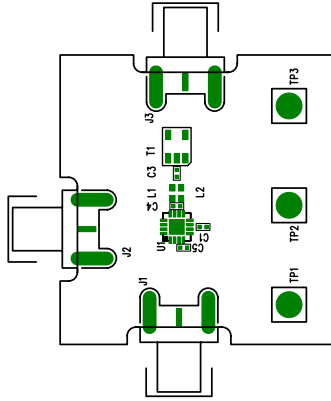
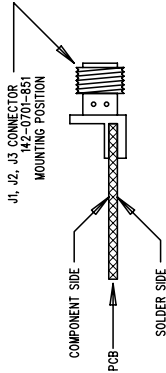


REVISION HISTORY

ECO	REV	DESCRIPTION	DATE	APPROVED

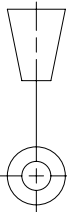


COMPONENT SIDE

LI-COMPONENT SIDE

NOTES: UNLESS OTHERWISE SPECIFIED

1. WORKMANSHIP SHALL BE IN ACCORDANCE WITH IPC-A-610.
2. PLACE U1 SO PIN-1 TRIANGLE IS IN UPPER-LEFT POSITION.
3. INSERT SMA CONNECTORS FLUSH AGAINST BOARD EDGE.
4. ASSY PROCESSES SHALL INCLUDE: REFLOW SOLDER TOP SIDE SMD.
HAND SOLDER BOTTOM SIDE SMD.
HAND SOLDER BOTTOM THRU-HOLE COMPONENTS.
5. PARTS TO OMIT WILL BE SPECIFIED ON THE PARTS LIST.
LOCATIONS OF OMITTED PARTS SHALL BE FREE FO SOLDER.
MASK THE SOLDER STENCIL WHERE SMT PARTS ARE OMITTED.
6. SHORTAGES SHALL EXIST ON THE MINIMUM NUMBER OF BOARDS.
7. DO NOT OTHERWISE MARK BOARDS (e.g. NO QA-STAMP).
8. DEPANELIZE BOARDS AFTER ASSEMBLY.

UNLESS OTHERWISE SPECIFIED DIMENSIONS ARE IN INCHES TOLERANCES ON ANGLE $\pm 1^\circ$ 2 PLACE ± 01 3 PLACE ± 005 INTERPRET DIM AND TOL PER ASME Y14.5M - 1994	CONTRACT NO		DATE	
	APPROVALS		DATE	
	DRAWN	MEI	4/23/02	
	CHECKED			
THIRD ANGLE PROJECTION 	APPROVED			
	ENGINEER			
DO NOT SCALE DRAWING	SCALE 1/1		FILENAME: 689A-1.PCB	
	SIZE A		DWG NO DC689A	
	CAGE CODE		REV 1	
	SHEET 1 OF 1			



1630 McCarthy Blvd.
Milpitas, CA 95035
Phone: (408)432-1900
Fax: (408)434-0507

TITLE
ASSY, LT5522EUF, DOWN CONVERTING MIXER
PCB