
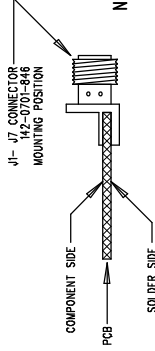


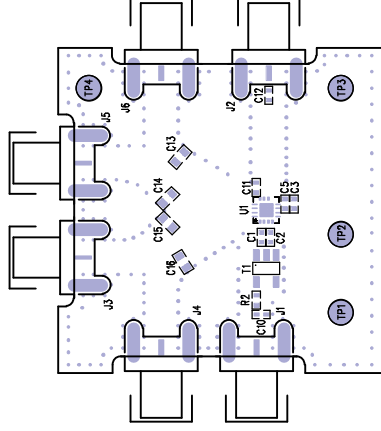
LTC CONFIDENTIAL – For Customer Use Only


		DWG NO		DC678A		SH	1	REV	2
REVISION HISTORY									
ECO	REV	DESCRIPTION			DATE		APPROVED		



NOTES: UNLESS OTHERWISE SPECIFIED

1. WORKMANSHIP SHALL BE IN ACCORDANCE WITH IPC-A-610.
2. PLACE U3 & U5 WITH TOP MARKINGS VISIBLE, AND ORIENT THEM AS SHOWN.
3. PLACE U2 SO PIN-1 TRIANGLE IS IN UPPER-LEFT POSITION.
4. INSERT SMA CONNECTORS FLUSH AGAINST BOARD EDGE.
5. ASSY PROCESSES SHALL INCLUDE: REFLOW SOLDER TOP SIDE SMD.  
HAND SOLDER BOTTOM SIDE SMD.  
HAND SOLDER BOTTOM THRU-HOLE COMPONENTS.
6. PARTS TO OMIT WILL BE SPECIFIED ON THE PARTS LIST.  
LOCATIONS OF OMITTED PARTS SHALL BE FREE OF SOLDER.  
MASK THE SOLDER STENCIL WHERE SMT PARTS ARE OMITTED.
7. SHORTAGES SHALL EXIST ON THE MINIMUM NUMBER OF BOARDS.
8. DEPANELIZE BOARDS AFTER ASSEMBLY.



UNLESS OTHERWISE SPECIFIED DIMENSIONS ARE IN INCHES TOLERANCES ON ANGLE ± ° 2 PLACE ± .01 3 PLACE ± .005 INTERPRET DIM AND TOL PER ASME Y14.5M - 1994	CONTRACT NO			1630 McCarthy Blvd. Milpitas, CA 95035 Phone: (408)432-1900 Fax: (408)434-0507		
	APPROVALS		DATE	ASY, Quadrature Demodulator		
	DRAWN	RUDY B.	10/20/03			
	CHECKED					
	APPROVED					
THIRD ANGLE PROJECTION	ENGINEER					
						
	DO NOT SCALE DRAWING					
TITLE			SIZE	CAGE CODE	DWG NO	REV
			A		DC678A	0
			SCALE	1/1	FILENAME: 678A_06.PCB	SHEET 1 OF 1