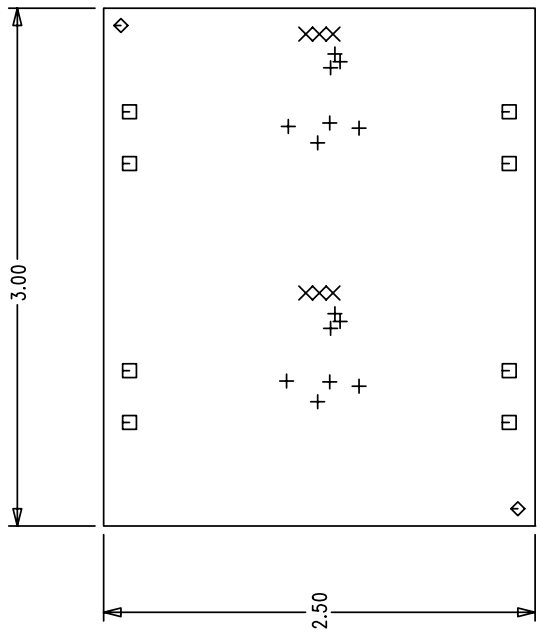
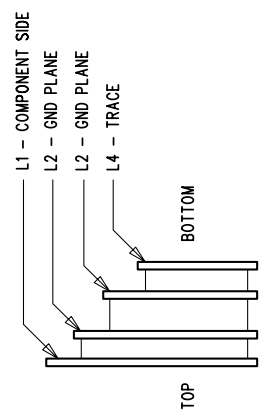


REVISION HISTORY			
ECO	REV	DESCRIPTION	DATE
			APPROVED



COMPONENT SIDE SHOWN



LAYER CONSTRUCTION

HOLE LEGEND

TOLERANCE	SIZE	QTY	SYM	PLTD
+/-0.003	10	14	+	PLTD
+/-0.003	30	6	X	PLTD
+/-0.003	64	8	□	PLTD
+/-0.005	70	2	◇	NPLTD

- NOTES: UNLESS OTHERWISE SPECIFIED,
- ARTWORK P/N DC670A REV 2.
 - FAB PER IPC-A-600
 - MATERIAL: EPOXY FIBERGLASS, NEMA GRADE FR-4 .062 +/- .005 INCH THICKNESS WITH 2 OZ. COPPER FINISH ON TWO OUTER LAYERS AND 1 OZ. COPPER ON TWO INTERNAL LAYERS. FLAMABILITY RATING: 94 V-2 MINIMUM .
 - SIZE: CUT TO DIMENSIONS AND TOLERANCES SHOWN. 0.00 ARE PRIMARY DATUMS.
 - BOARD: SELECTIVE PLATED BOARD. SOLDER MASK OVER BARE COPPER, COLOR, GREEN LPI. COMPONENT SIDE ONLY. WHITE TIN IMMERSION (OMIKRON) BOTH SIDES. SILKSCREEN COMPONENT SIDE WITH WHITE NON-CONDUCTIVE INK.
 - PLATE THRU ALL HOLES WITH COPPER MIN. PLATING THICKNESS: 1 OZ. EXCEPT WHERE PLATING NOT REQUIRED
 - DRILL: ALL HOLES SHALL BE DRILLED +/- .003 INCH WITH RESPECT TO CTR. OF DRILLED PAD. ALL HOLES FINISHED SIZE AFTER PLATING.
 - DROP ALL UNUSED PADS ON INNER LAYERS.
 - DO NOT ALTER ARTWORK e.g. TO ADD LOGO OR DATE CODE.

UNLESS OTHERWISE SPECIFIED
DIMENSIONS ARE IN INCHES
TOLERANCES ON ANGLE ±1 °
2 PLACE ±.01 3 PLACE ±.005
INTERPRET DIM AND TOL
PER ASME Y14.5M - 1994

THIRD ANGLE PROJECTION

DO NOT SCALE DRAWING

CONTRACT NO

APPROVALS

DRAWN MEI

CHECKED

APPROVED

ENGINEER

DATE

03/28/03

LINEAR TECHNOLOGY

1630 McCarthy Blvd.
Milpitas, CA 95035
Phone: (408)432-1900
Fax: (408)434-0507

TITLE

FAB, LT3462ES6/LT3462AES6 INVERTING
DC/DC CONVERTER

SIZE A

CAGE CODE

DWG NO DC670A

REV 2

SCALE 1/1

FILENAME: 670A-2.PCB

SHEET 1 OF 1