

DEMOCIRCUIT 648A

J1

J2

J3

J4

J5

J6

J7

J8

J9

J10

J11

J12

J13

J14

J15

J16

J17

J18

J19

J20

J21

J22

J23

J24

J25

J26

J27

J28

J29

J30

J31

J32

J33

J34

J35

J36

J37

J38

J39

J40

J41

J42

J43

J44

J45

J46

J47

J48

J49

J50

J51

J52

J53

J54

J55

J56

J57

J58

J59

J60

J61

J62

J63

J64

J65

J66

J67

J68

J69

J70

J71

J72

J73

J74

J75

J76

J77

J78

J79

J80

J81

J82

J83

J84

J85

J86

J87

J88

J89

J90

J91

J92

J93

J94

J95

J96

J97

J98

J99

J100

J101

J102

J103

J104

J105

J106

J107

J108

J109

J110

J111

J112

J113

J114

J115

J116

J117

J118

J119

J120

J121

J122

J123

J124

J125

J126

J127

J128

J129

J130

J131

J132

J133

J134

J135

J136

J137

J138

J139

J140

J141

J142

J143

J144

J145

J146

J147

J148

J149

J150

J151

J152

J153

J154

J155

J156

J157

J158

J159

J160

J161

J162

J163

J164

J165

J166

J167

J168

J169

J170

J171

J172

J173

J174

J175

J176

J177

J178

J179

J180

J181

J182

J183

J184

J185

J186

J187

J188

J189

J190

J191

J192

J193

J194

J195

J196

J197

J198

J199

J200

J201

J202

J203

J204

J205

J206

J207

J208

J209

J210

J211

J212

J213

J214

J215

J216

J217

J218

J219

J220

J221

J222

J223

J224

J225

J226

J227

J228

J229

J230

J231

J232

J233

J234

J235

J236

J237

J238

J239

J240

J241

J242

J243

J244

J245

J246

J247

J248

J249

J250

J251

J252

J253

J254

J255

J256

J257

J258

J259

J260

J261

J262

J263

J264

J265

J266

J267

J268

J269

J270

J271

J272

J273

J274

J275

J276

J277

J278

J279

J280

J281

J282

J283

J284

J285

J286

J287

J288

J289

J290

J291

J292

J293

J294

J295

J296

J297

J298

J299

J300

J301

J302

J303

J304

J305

J306

J307

J308

J309

J310

J311

J312

J313

J314

J315

J316

J317

J318

J319

J320

J321

J322

J323

J324

J325

J326

J327

J328

J329

J330

J331

J332

J333

J334

J335

J336

J337

J338

J339

J340

J341

J342

J343

J344

J345

J346

J347

J348

J349

J350

J351

J352

J353

J354

J355

J356

J357

J358

J359

J360

J361

J362

J363

J364

J365

J366

J367

J368

J369

J370

J371

J372

J373

J374

J375

J376

J377

J378

J379

J380

J381

J382

J383

J384

J385

J386

J387

J388

J389

J390

J391

J392

J393

J394

J395

J396

J397

J398

J399

J400

J401

J402

J403

J404

J405

J406

J407

J408

J409

J410

J411

J412

J413

J414

J415

J416

J417

J418

J419

J420

J421

J422

J423

J424

J425

J426

J427

J428

J429

J430

J431

J432

J433

J434

J435

J436

J437

J438

J439

J440

J441

J442

J443

J444

J445

J446

J447

J448

J449

J450

J451

J452

J453

J454

J455

J456

J457

J458

J459

J460

J461

J462

J463

J464

J465

J466

J467

J468

J469

J470

J471

J472

J473

J474

J475

J476

J477

J478

J479

J480

J481

J482

J483

J484

J485

J486

J487

J488

J489

J490

J491

J492

J493

J494

J495

J496

J497

J498

J499

J500

J501

J502

J503

J504

J505

J506

J507

J508

J509

J510

J511

J512

J513

J514

J515

J516

J517

J518

J519

J520

J521

J522

J523

J524

J525

J526

J527

J528

J529

J530

J531

J532

J533

J534

J535

J536

J537

J538

J539

J540

J541

J542

J543

J544

J545

J546

J547

J548

J549

J550

J551

J552

J553

J554

J555

J556

J557

J558

J559

J560

J561

J562

J563

J564

J565

J566

J567

J568

J569

J570

J571

J572

J573

J574

J575

J576

J577

J578

J579

J580

J581

J582

J583

J584

J585

J586

J587

J588

J589

J590

J591

J592

J593

J594

J595

J596

J597

J598

J599

J600

J601

J602

J603

J604

J605

J606

J607

J608

J609

J610

J611

J612

J613

J614

J615

J616

J617

J618

J619

J620

J621

J622

J623

J624

J625

J626

J627

J628

J629

J630

J631

J632

J633

J634

J635

J636

J637

J638

J639

J640

J641

J642

J643

J644

J645

J646

J647

J648

J649

J650

J651

J652

J653

J654

J655

J656

J657

J658

J659

J660

J661

J662

J663

J664

J665

J666

J667

J668

J669

J670

J671

J672

J673

J674

J675

J676

J677

J678

J679

J680

J681

J682

J683

J684

J685

J686

J687

J688

J689

J690

J691

J692

J693

J694

J695

J696

J697

J698

J699

J700

J701

J702

J703

J704

J705

J706

J707

J708

J709

J710

J711

J712

J713

J714

J715

J716

J717

J718

J719

J720

J721

J722

J723

J724

J725

J726

J727

J728

J729

J730

J731

J732

J733

J734

J735

J736

J737

J738

J739

J740

J741

J742

J743

J744

J745

J746

J747

J748

J749

J750

J751

J752

J753

J754

J755

J756

J757

J758

J759

J760

J761

J762

J763

J764

J765

J766

J767

J768

J769

J770

J771

J772

J773

J774

J775

J776

J777

J778

J779

J780

J781

J782

J783

J784

J785

J786

J787

J788

J789

J790

J791

J792

J793

J794

J795

J796

J797

J798

J799

J800

J801

J802

J803

J804

J805

J806

J807

J808

J809

J810

J811

J812

J813

J814

J815

J816

J817

J818

J819

J820

J821

J822

J823

J824

J825

J826

J827

J828

J829

J830

J831

J832

J833

J834

J835

J836

J837

J838

J839

J840

J841

J842

J843

J844

J845

J846

J847

J848

J849

J850

J851

J852

J853

J854

J855

J856

J857

J858

J859

J860

J861

J862

J863

J864

J865

J866

J867

J868

J869

J870

J871

J872

J873

J874

J875

J876

J877

J878

J879

J880

J881

J882

J883

J884

J885

J886

J887

J888

J889

J890

J891

J892

J893

J894

J895

J896

J897

J898

J899

J900

J901

J902

J903

J904

J905

J906

J907

J908

J909

J910

J911

J912

J913

J914

J915

J916

J917

J918

J919

J920

J921

J922

J923

J924

J925

J926

J927

J928

J929

J930

J931

J932

J933

J934

J935

J936

J937

J938

J939

J940

J941

J942

J943

J944

J945

J946

J947

J948

J949

J950

J951

J952

J953

J954

J955

J956

J957

J958

J959

J960

J961

J962

J963

J964

J965

J966

J967

J968

J969

J970

J971

J972

J973

J974

J975

J976

J977

J978

J979

J980

J981

J982

J983

J984

J985

J986

J987

J988

J989

J990

J991

J992

J993

J994

J995

J996

J997

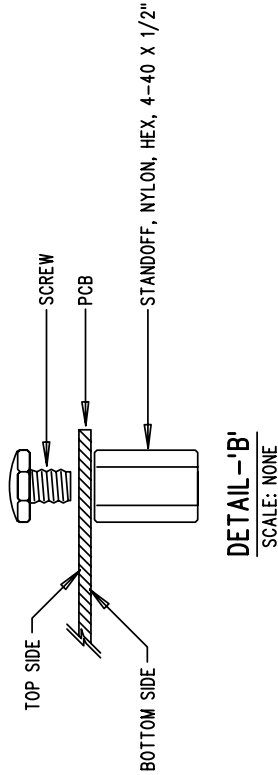
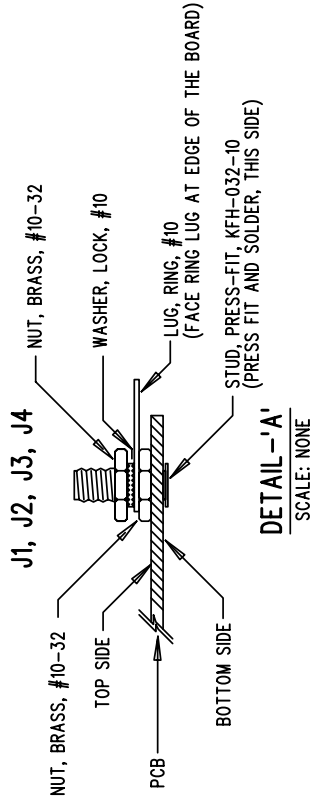
J998

J999

J1000

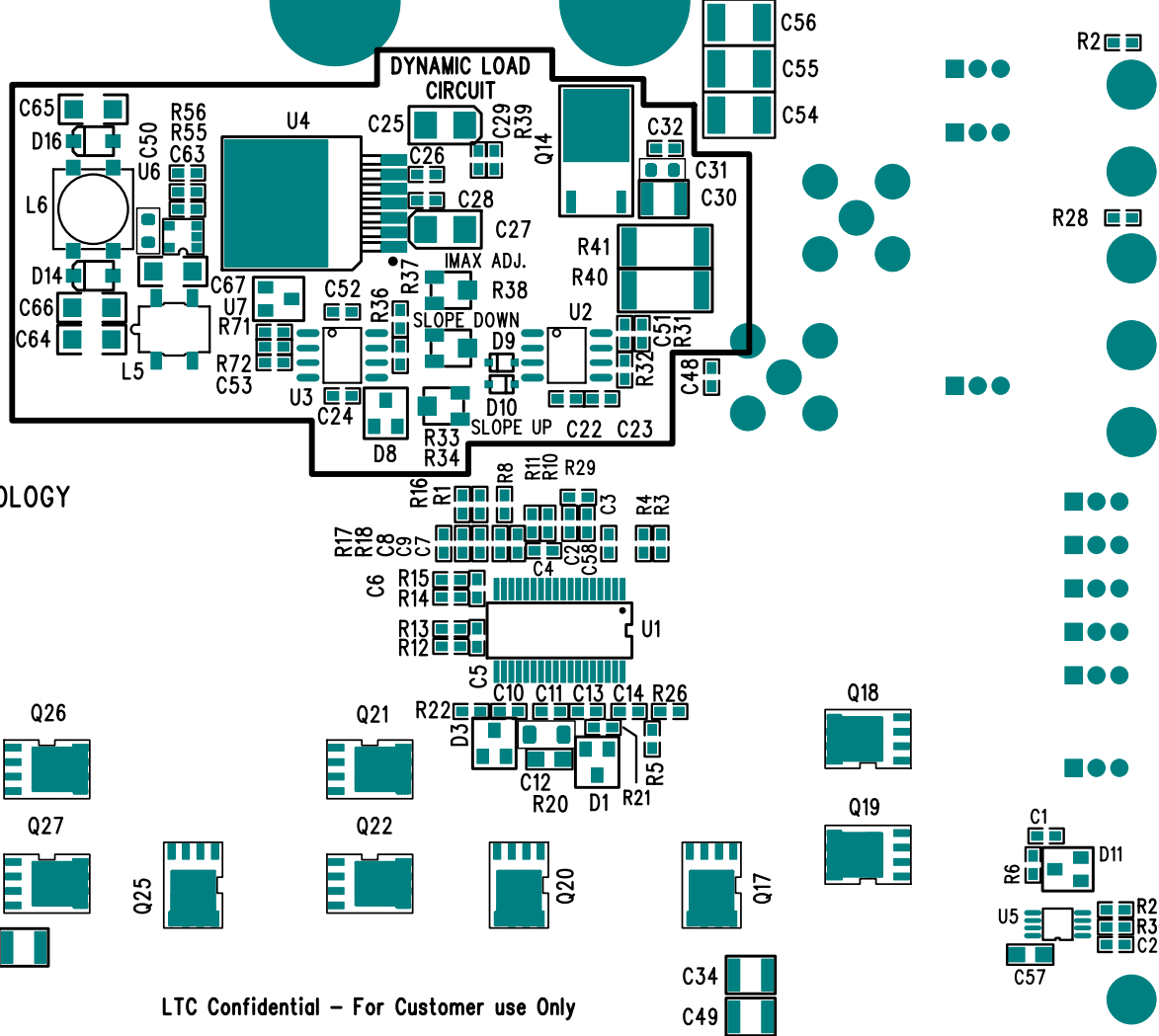
NOTES: UNLESS OTHERWISE SPECIFIED

1. PARTS LIST: SEE BOM DC648A REV. 2
2. WORKMANSHIP SHALL BE IN ACCORDANCE WITH IPC-A-610.
3. PARTS TO OMIT WILL BE SPECIFIED ON THE BILL OF MATERIAL. LOCATIONS OF OMITTED PARTS SHALL BE FREE OF SOLDER. MASK THE SOLDER STENCIL WHERE SMT PARTS ARE OMITTED.
4. DEPANELIZE BOARDS AFTER ASSEMBLY.



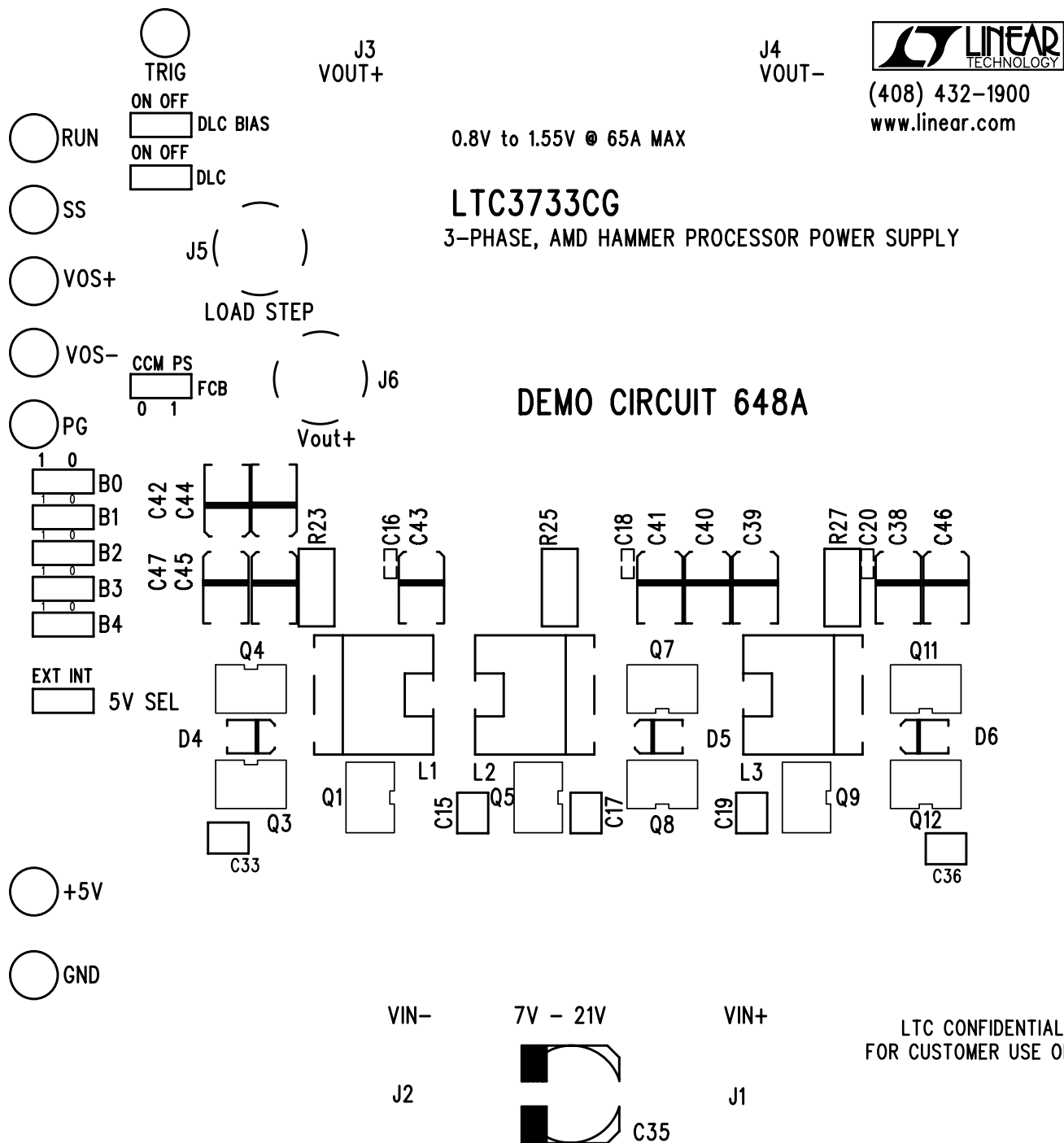
COMPANY LINEAR TECHNOLOGY CORPORATION			
TITLE A/W. LTC3733CG DEMO PCB		REV 2	
NO. DC648A		SILKSCREEN TOP	
DSMR: MEI	SHT. 7 OF 10	DATE: 05/30/03	



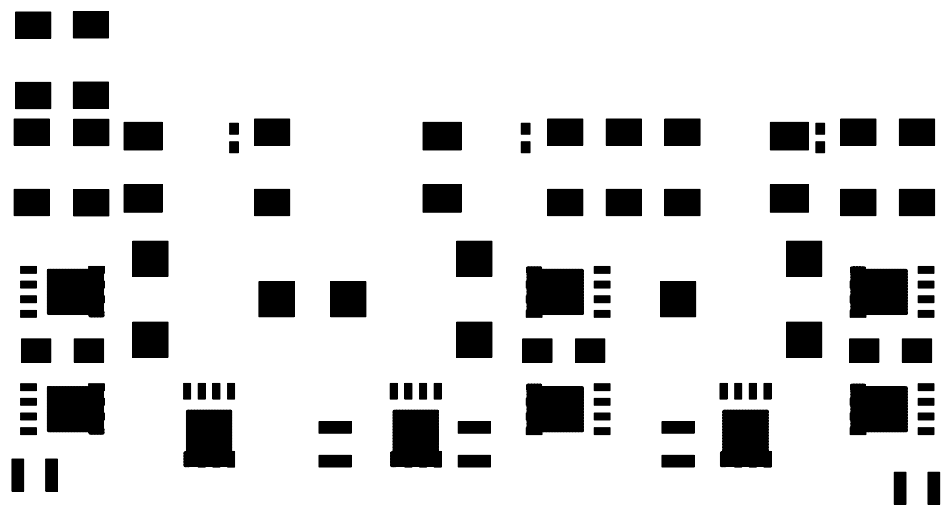


COMPANY LINEAR TECHNOLOGY CORPORATION			
TITLE A\W\TCT3333G DEMO PCB		NO. DC648A	REV 5
SILKSCREEN BOTTOM			
DATE: 02\30\03		TH2. 8 OF 10	
D2NR: MEI			

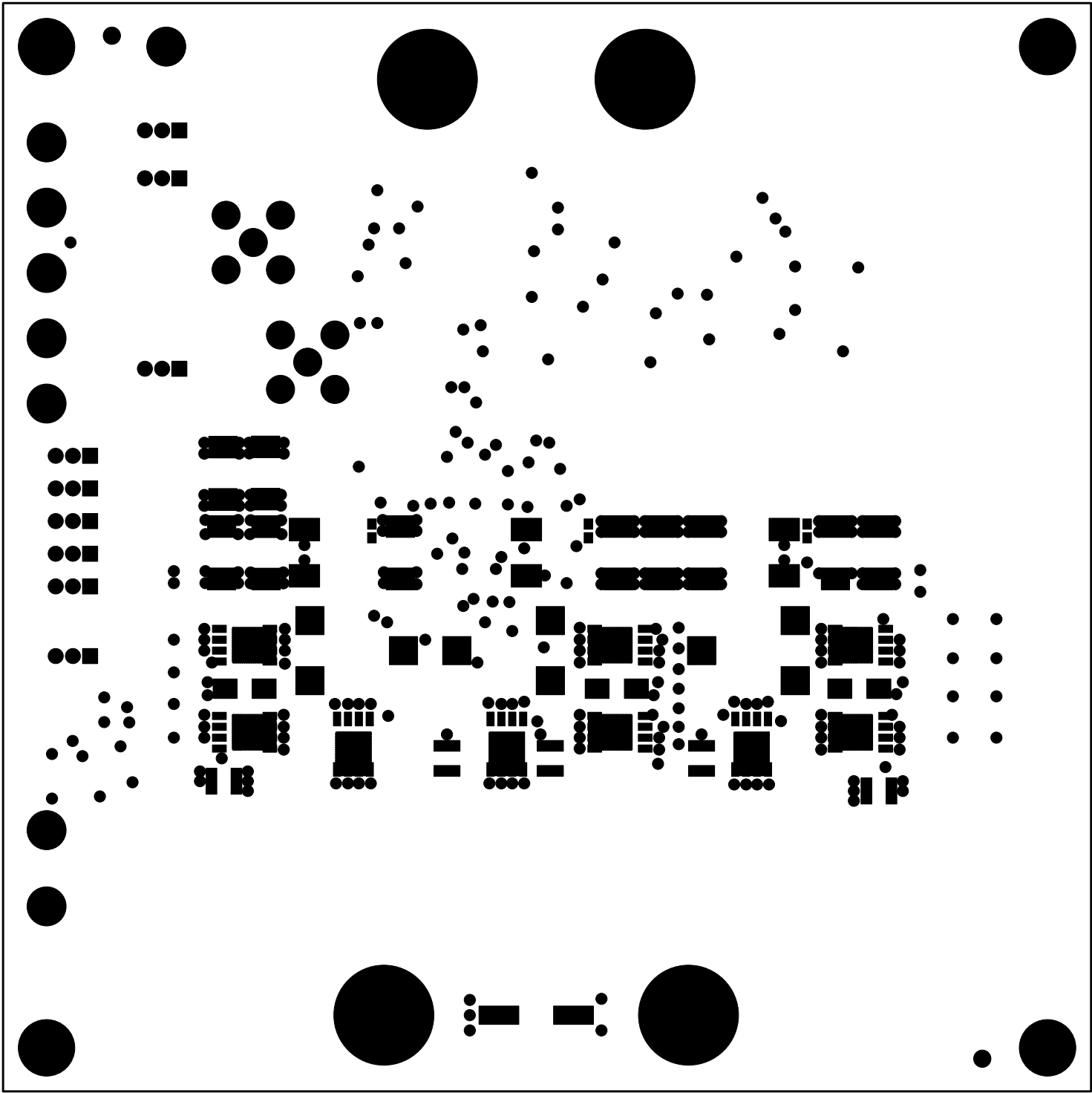




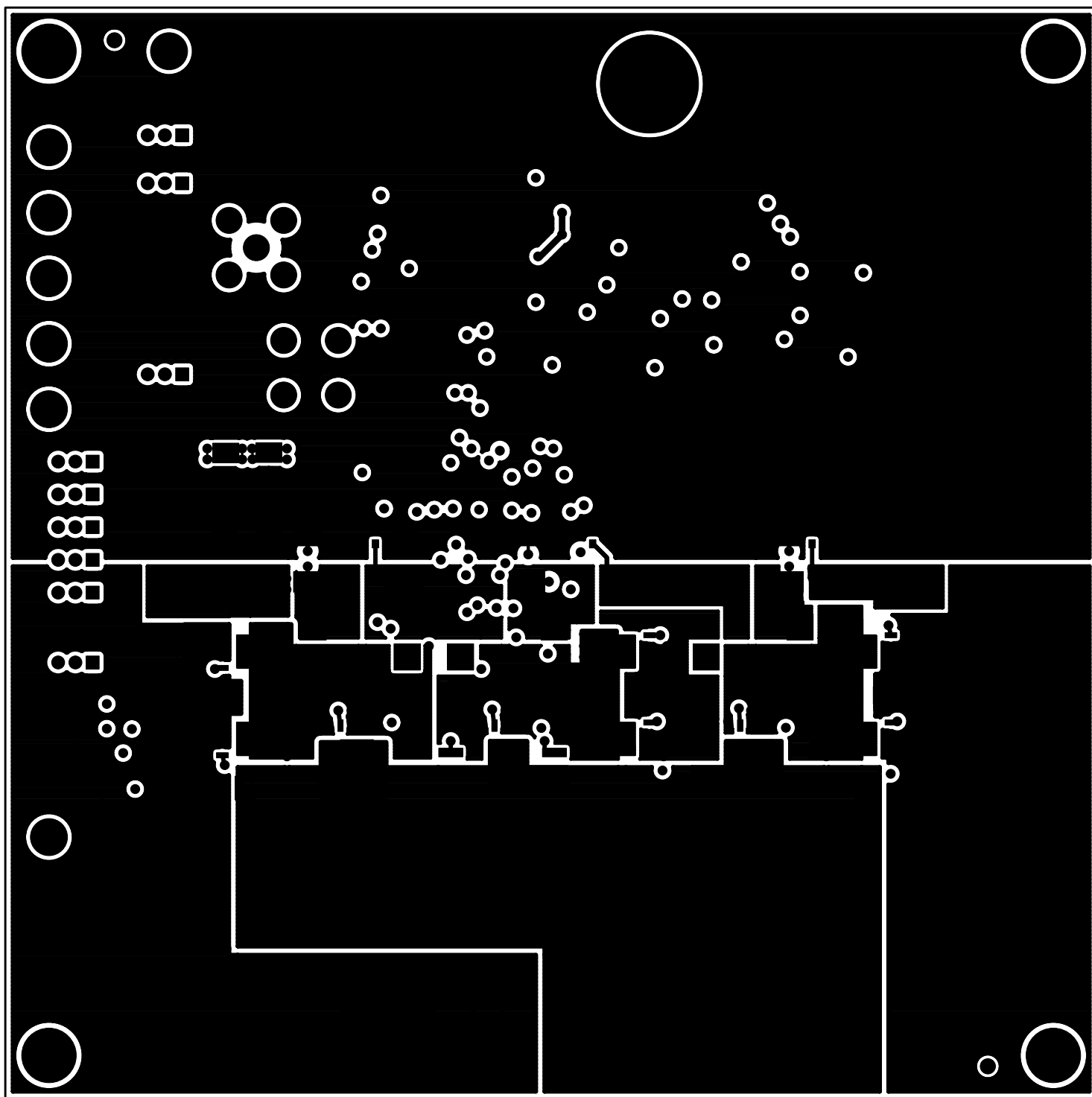
COMPANY <b>LINEAR TECHNOLOGY CORPORATION</b>		
TITLE <b>A/W, LTC3733CG DEMO PCB</b>	NO. <b>DC648A</b>	REV <b>2</b>
		<b>SILKSCREEN TOP</b>
DSNR: <b>MEI</b>	SHT. <b>7</b> OF <b>10</b>	DATE: <b>05/30/03</b>



COMPANY LINEAR TECHNOLOGY CORPORATION		
TITLE A/W, LTC3733CG DEMO PCB	NO. DC648A	REV 2
	PASTE MASK TOP	
DSNR: MEI	SHT. OF 10	DATE: 05/30/03



COMPANY LINEAR TECHNOLOGY CORPORATION			
TITLEA/W, LTC3733CG DEMO PCB		NO. DC648A	REV 2
SOLDER MASK TOP			
DSNR: MEI	SHT. 9 OF 10	DATE: 05/30/03	

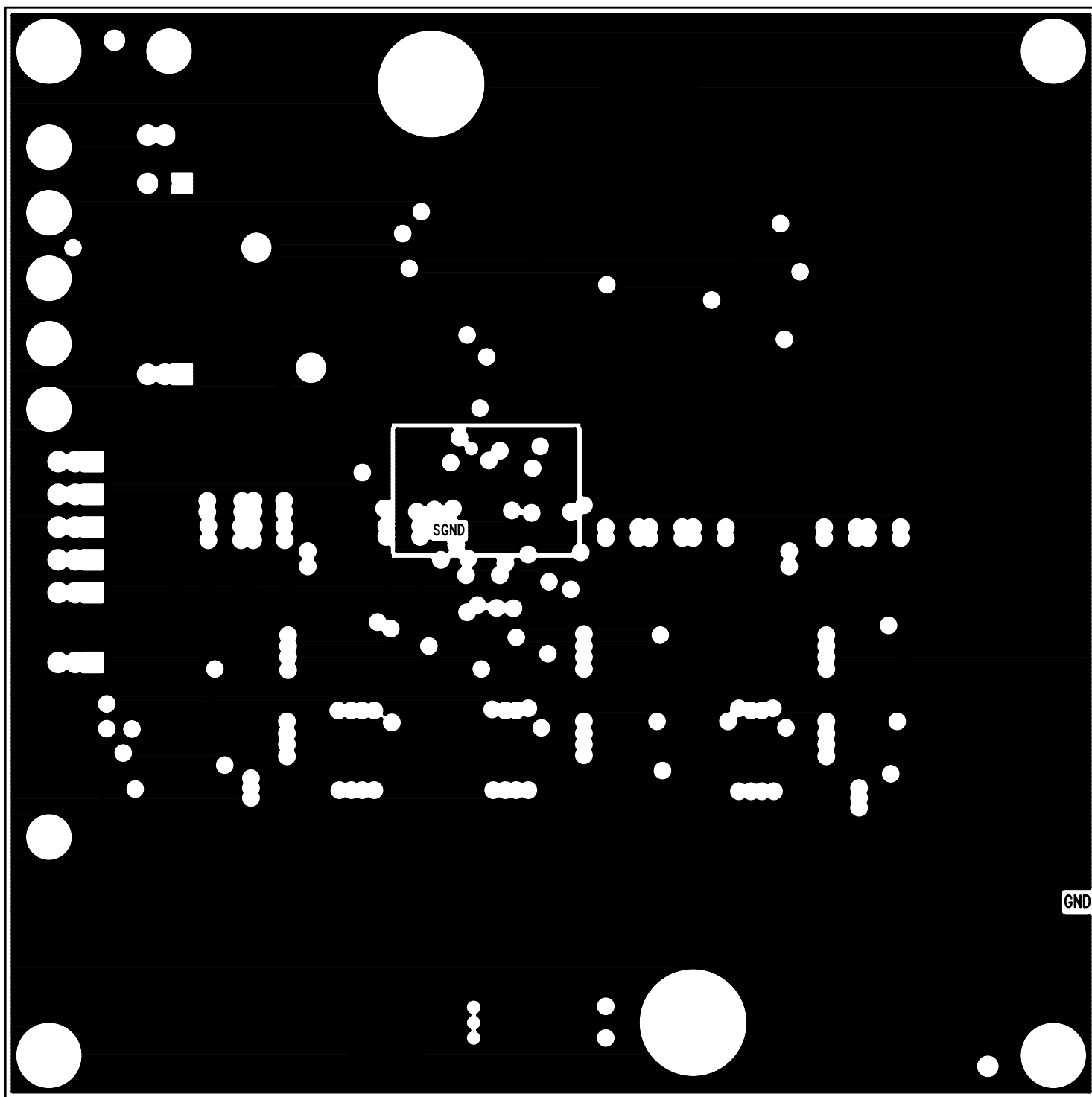


COMPANY LINEAR TECHNOLOGY CORPORATION		
TITLE A/W, LTC3733CG DEMO PCB	NO. DC648A	REV 2
L1-COMPONENT SIDE		
DSNR: MEI	SHT. 1 OF 10	DATE: 05/30/03

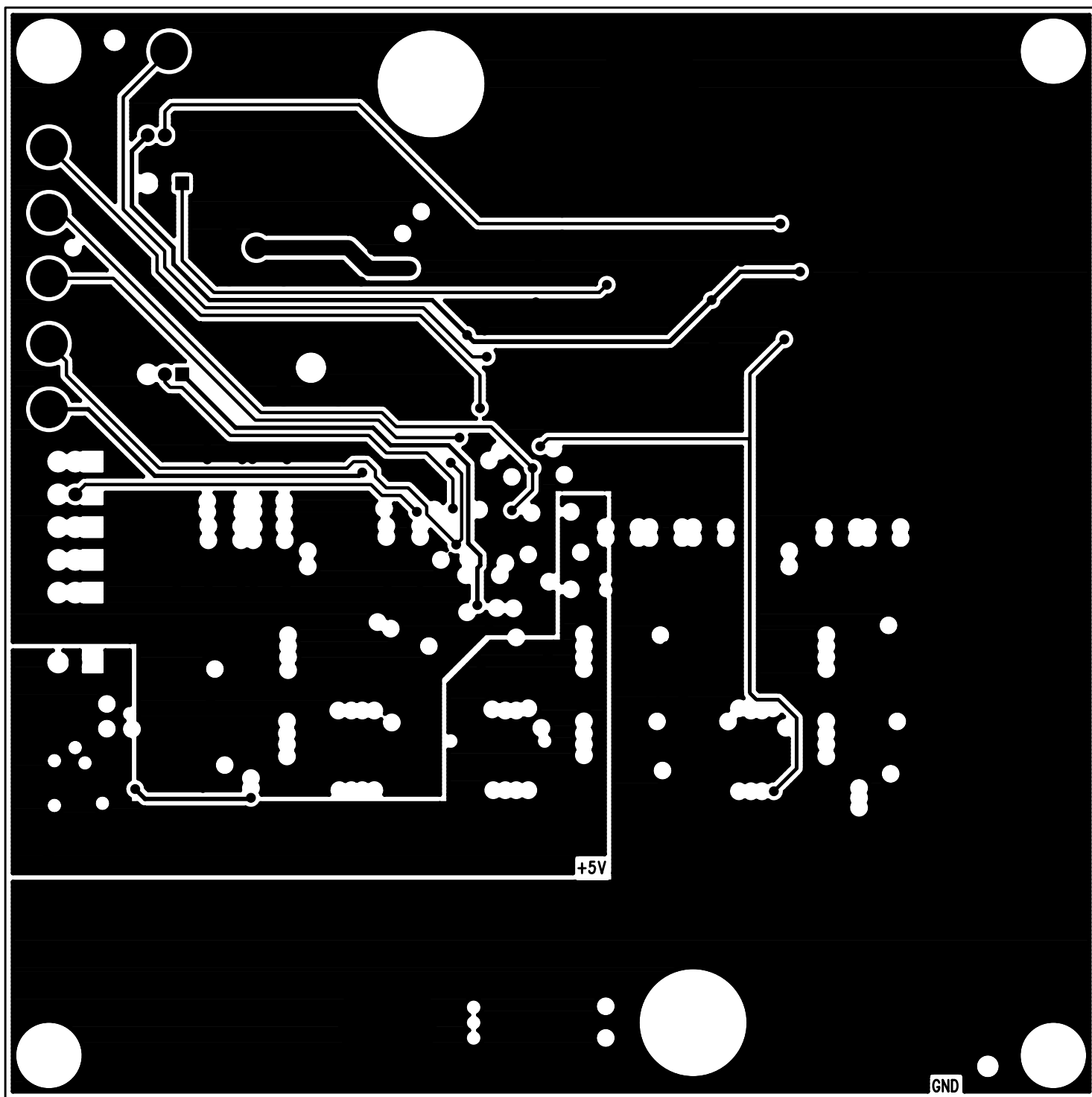




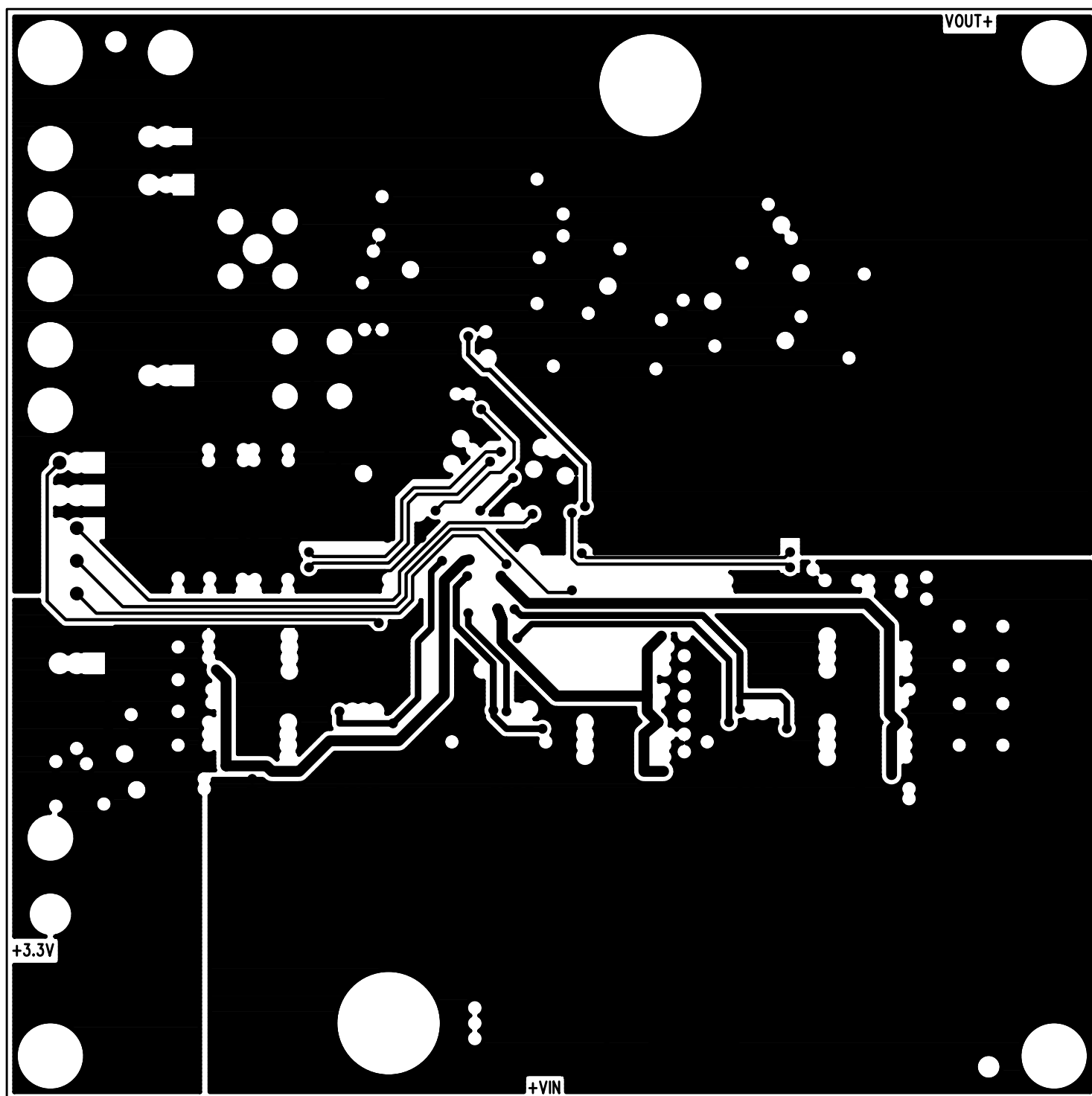
COMPANY			LINEAR TECHNOLOGY CORPORATION		
TITLE		A/W, LTC3733CG DEMO PCB		NO.	DC648A
				REV	2
L2-GND PLANE					
DSNR:	MEI	SHT. 2 OF 10		DATE: 05/30/03	



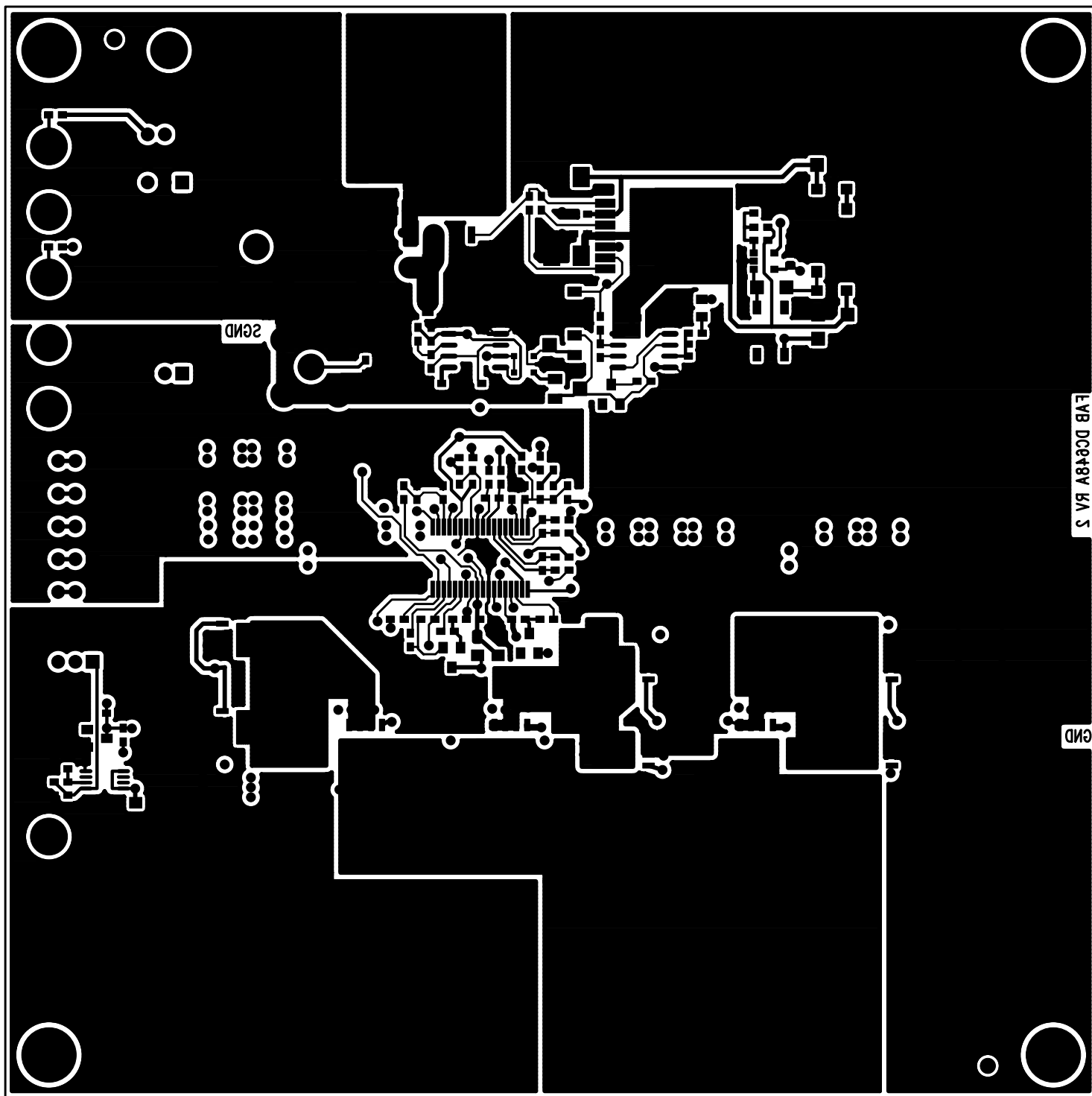
COMPANY LINEAR TECHNOLOGY CORPORATION			
TITLE A/W, LTC3733CG DEMO PCB		NO. DC648A	REV 2
		L3-GND	
DSNR: MEI	SHT. 3 OF 10	DATE: 05/30/03	



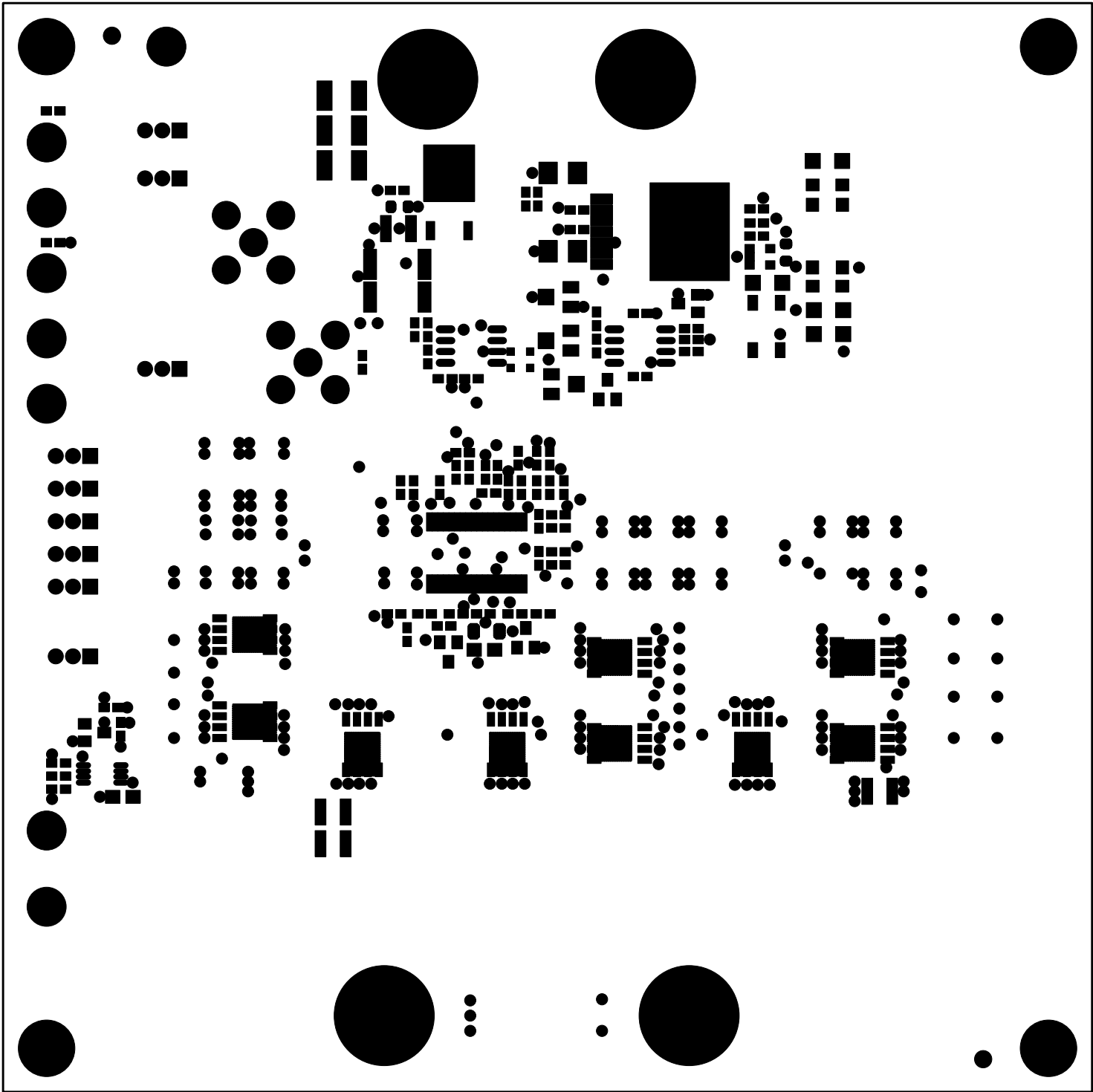
COMPANY LINEAR TECHNOLOGY CORPORATION		
TITLE A/W, LTC3733CG DEMO PCB	NO. DC648A	REV 2
	ЭЛАЯТ ЯЭИИИ-А-А	
DSNR: MEI	SHT. 4 OF 10	DATE: 05/30/03



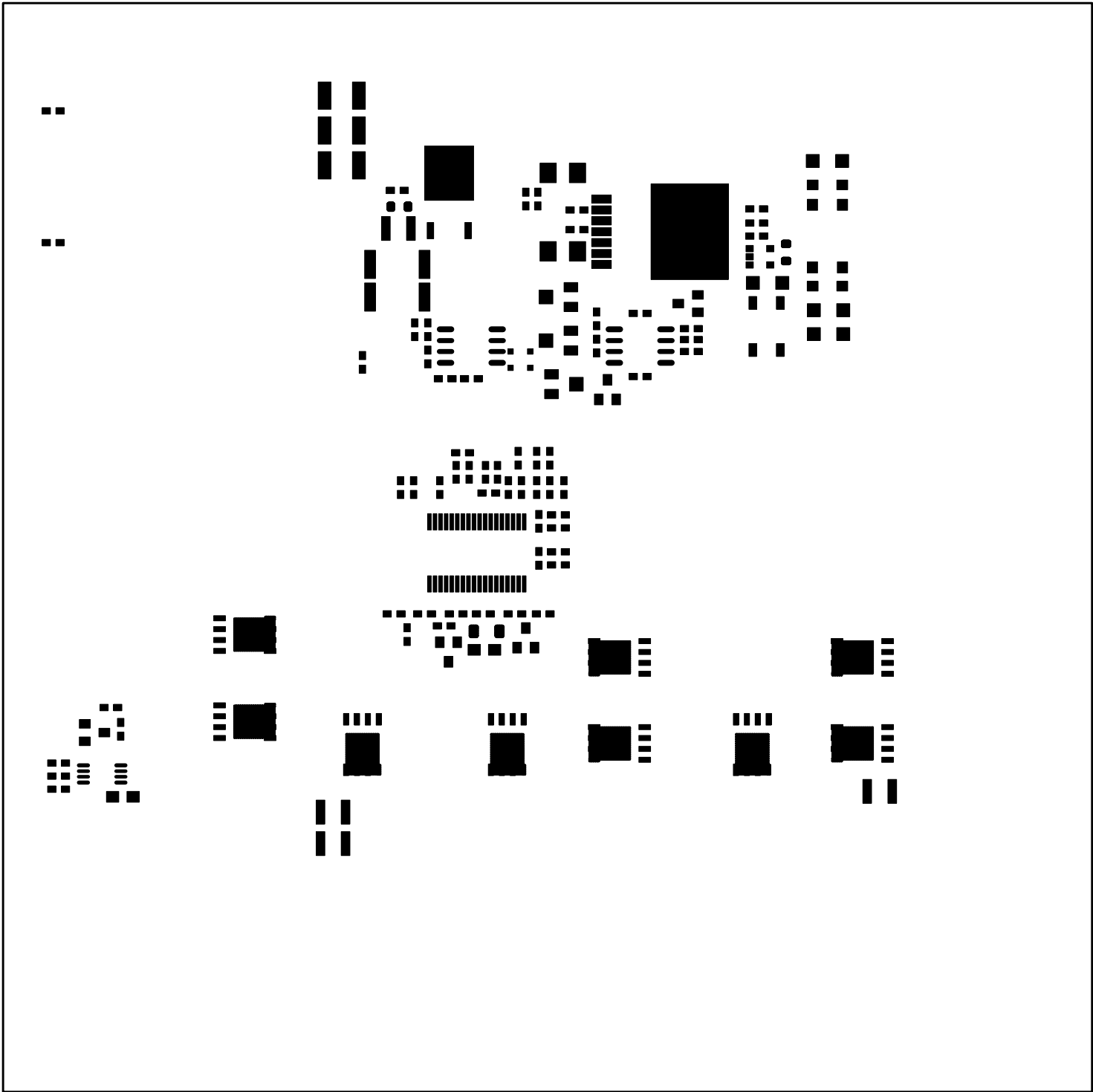
COMPANY LINEAR TECHNOLOGY CORPORATION		
TITLE A/W, LTC3733CG DEMO PCB	NO. DC648A	REV 2
	L2-INNER TRACE	
DSNR: MEI	SHT. 5 OF 10	DATE: 05/30/03



COMPANY LINEAR TECHNOLOGY CORPORATION			
TITLE A/W, LTC3733CG DEMO PCB		NO. DC648A	REV 2
		BOTTOM COMP SIDE	
DSNR: MEI	SHT. 6 OF 10		DATE: 05/30/03



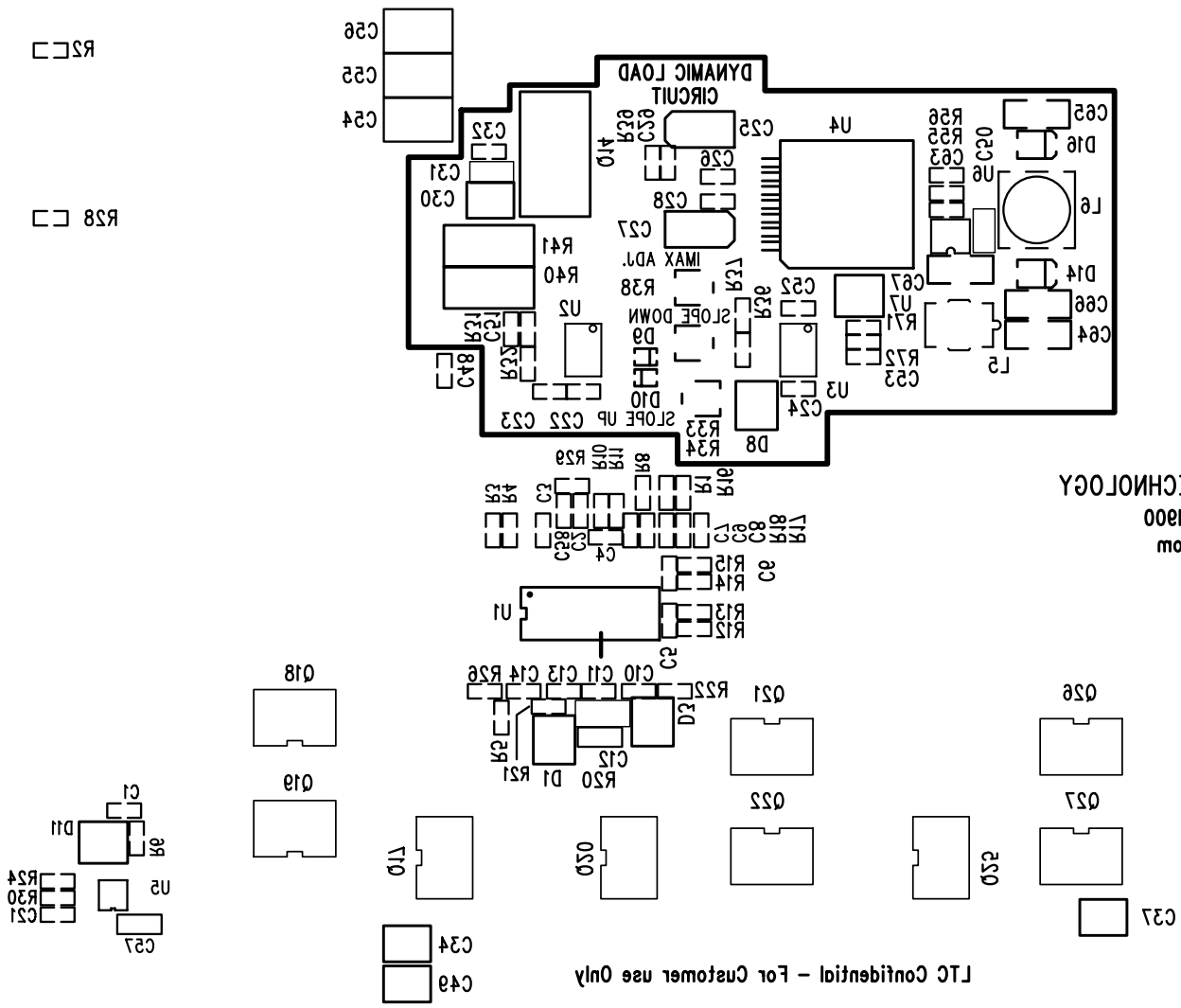
COMPANY LINEAR TECHNOLOGY CORPORATION		
TITLE A/W, LTC3733CG DEMO PCB	NO. DC648A	REV 2
MTB X2AM Я3DJ02		
DSNR: MEI	SHT. 10 OF 10	DATE: 05/30/03



COMPANY			LINEAR TECHNOLOGY CORPORATION		
TITLE		A/W, LTC3733CG DEMO PCB		NO.	DC648A
				REV	2
		PASTE MASK BOTTOM			
DSNR:		MEI	SHT.	OF	10
				DATE: 05/30/03	

COMPANY <b>LINEAR TECHNOLOGY CORPORATION</b>		
TITLE <b>A/W, LTC3733CG DEMO PCB</b>	NO. <b>DC648A</b>	REV <b>2</b>
		<b>SILKSCREEN BOTTOM</b>
DSNR: <b>MEI</b>		SHT. <b>6</b> OF <b>10</b>
DATE: <b>05/30/03</b>		

LTC Confidential - For Customer use Only



LINEAR TECHNOLOGY  
(408) 435-1800  
www.linear.com