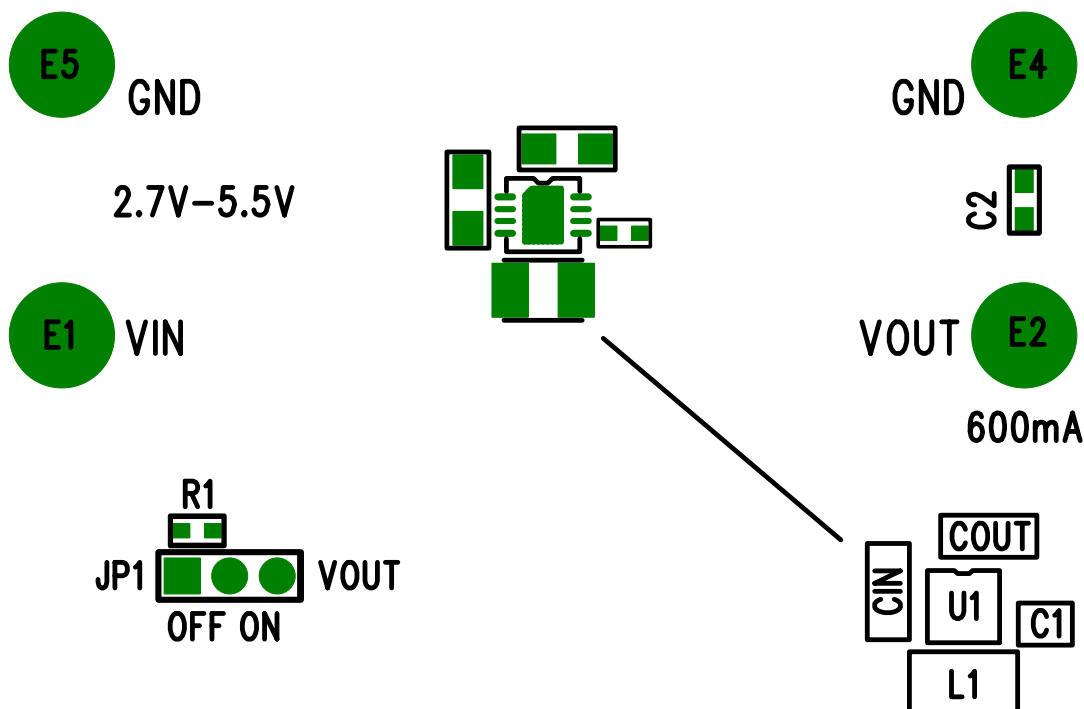


www.linear.com



(408) 432-1900

LTC3408EDD
WCDMA CELLULAR PHONE
BUCK REGULATOR
DEMO CIRCUIT 645A



LTC Confidential – For Customer Use Only

COMPANY		LINEAR TECHNOLOGY CORPORATION							
TITLE		A/W, LTC3408EDD DEMO PCB		NO. DC645A		REV 1			
		TOP SILKSCREEN							
DSNR:		MEI		SHT		OF 10		DATE: 06/26/03	

www.linear.com



(408) 432-1900

LTC3408EDD
WCDMA CELLULAR PHONE
BUCK REGULATOR
DEMO CIRCUIT 645A



REF

 R3

GND

2.7V-5.5V

VIN






 R1
 VOUT
OFF ON

GND



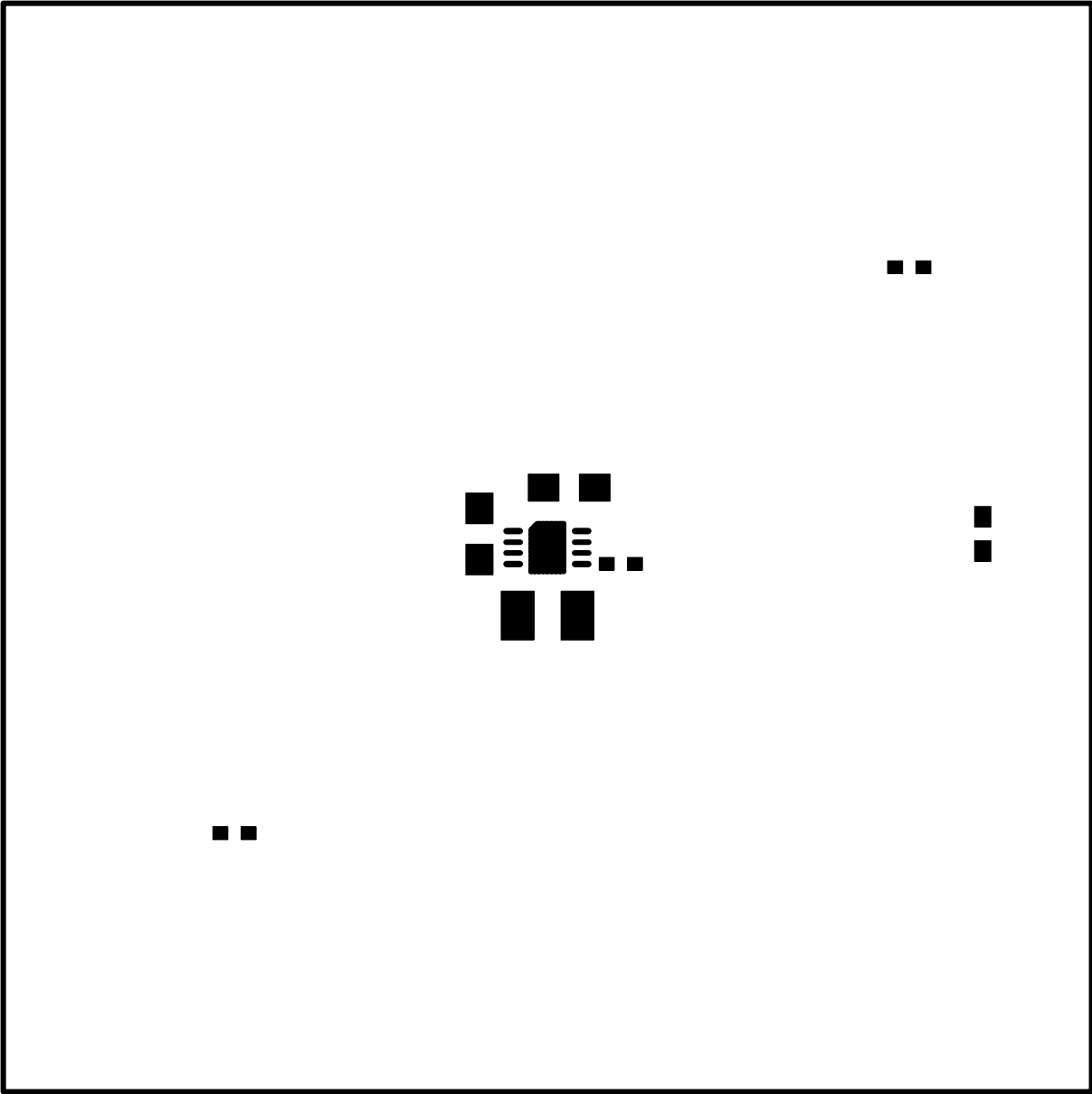
VOUT

600mA

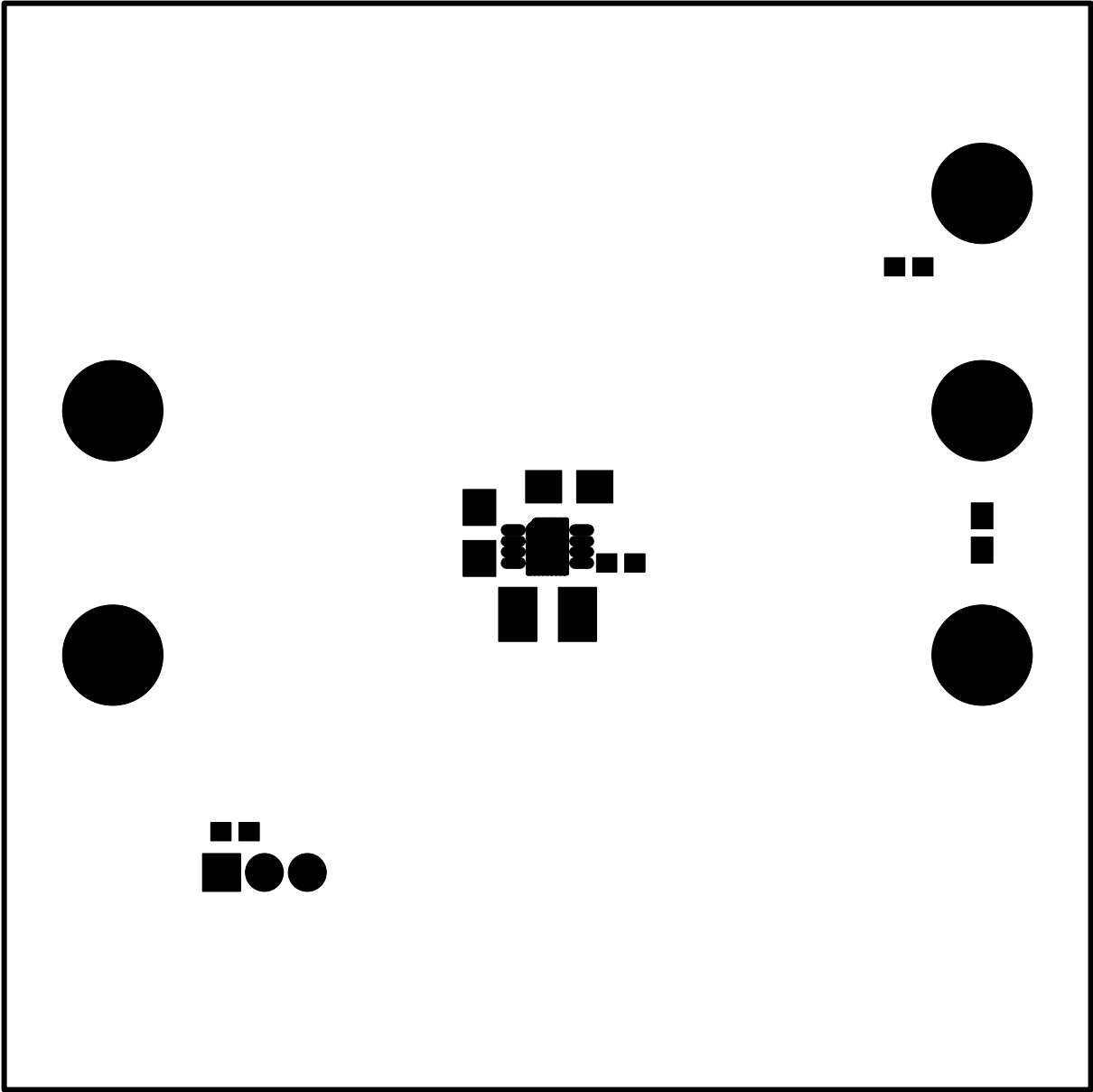
 CIN
 U1
 C1
 L1
 COUT

LTC Confidential – For Customer Use Only

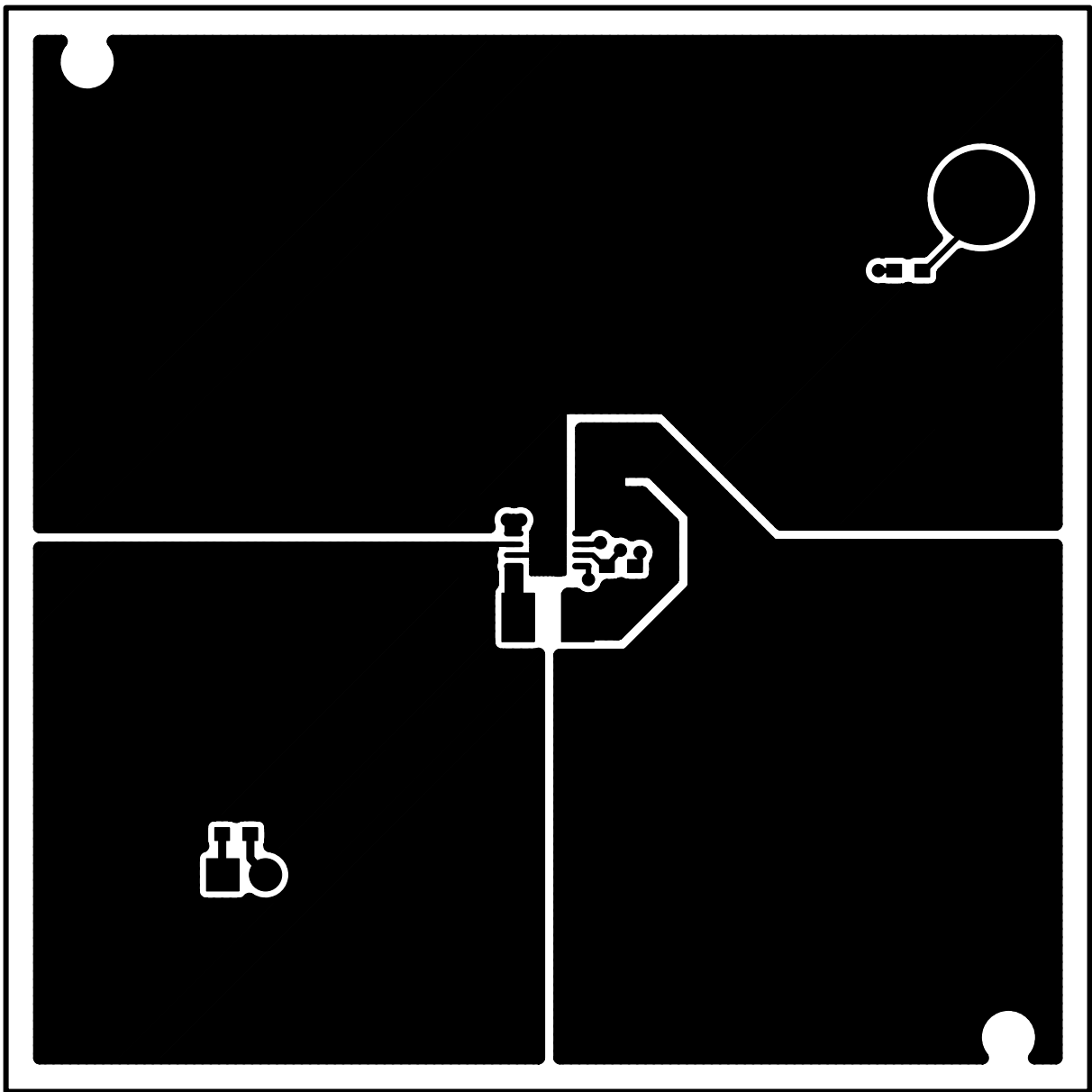
COMPANY			LINEAR TECHNOLOGY CORPORATION		
TITLE		A/W, LTC3408EDD DEMO PCB		NO.	DC645A
				REV	1
L1-COMPONENT SIDE					
		TOP SILKSCREEN			
DSNR:	MEI	SHT 1 OF 10		DATE: 06/26/03	



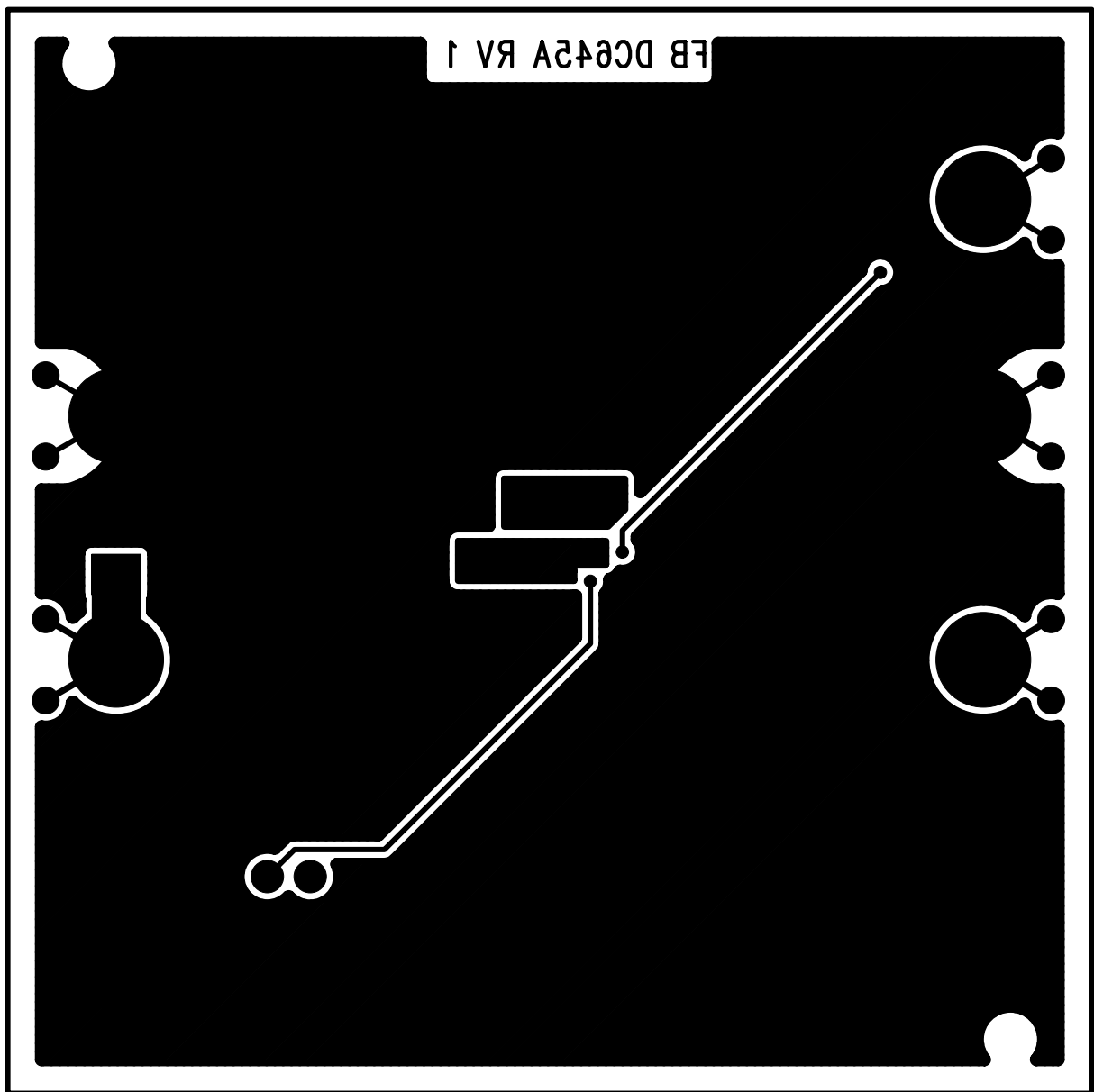
COMPANY			LINEAR TECHNOLOGY CORPORATION		
TITLE			A/W, LTC3408EDD DEMO PCB		NO. DC645A
					REV 1
					TOP PASTE
DSNR:		MEI	SHT	OF 10	DATE: 02/13/03



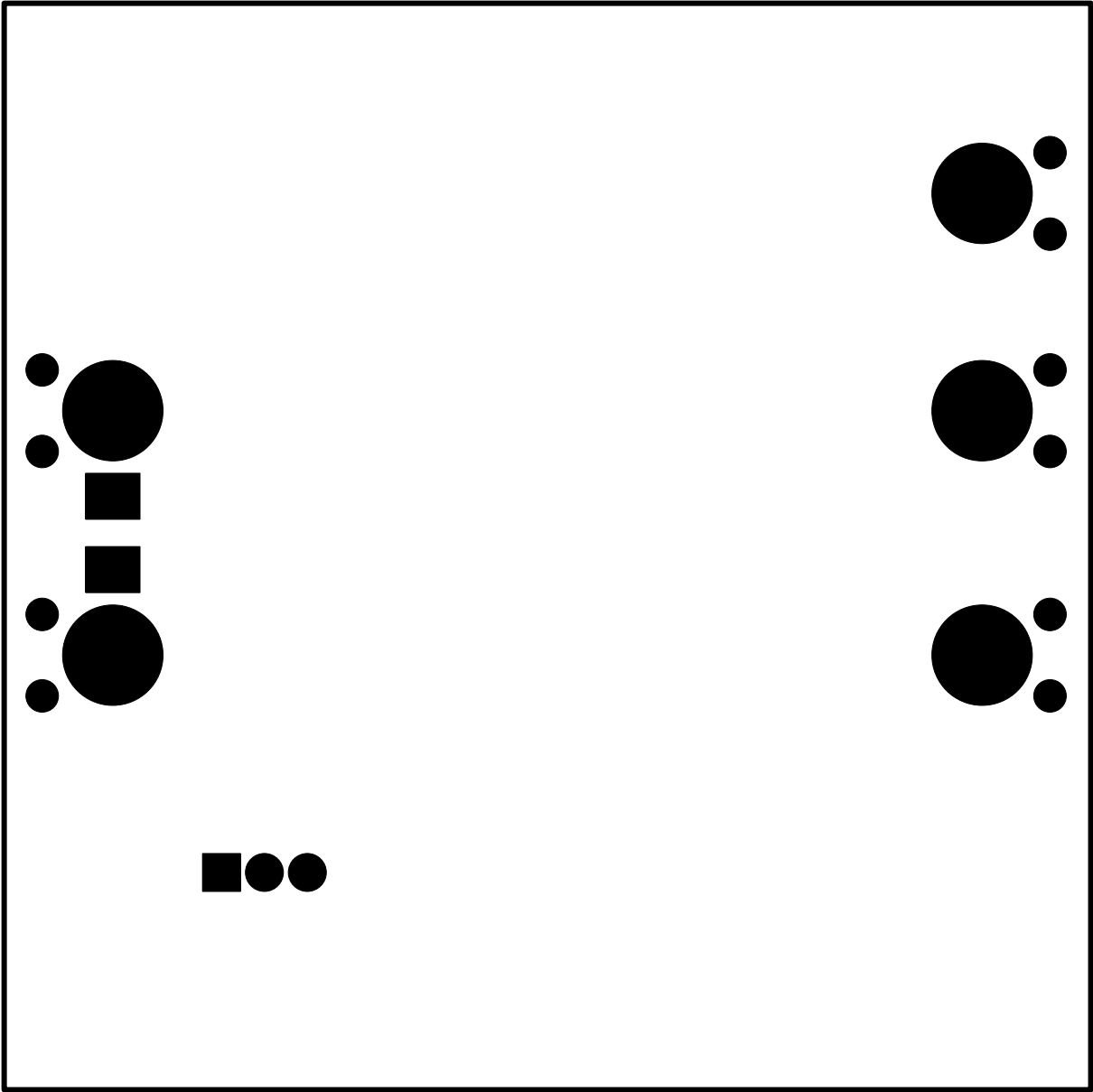
COMPANY			LINEAR TECHNOLOGY CORPORATION		
TITLE			A/W, LTC3408EDD DEMO PCB		NO. DC645A
					REV 1
			TOP SOLDERMASK		
DSNR:		MEI	SHT	OF 10	DATE: 02/13/03



COMPANY		LINEAR TECHNOLOGY CORPORATION					
TITLE		A/W, LTC3408EDD DEMO PCB		NO. DC645A		REV 1	
L1-COMPONENT SIDE							
DSNR:		MEI		SHT 1 OF 10		DATE: 02/13/03	



COMPANY			LINEAR TECHNOLOGY CORPORATION		
TITLE			A/W, LTC3408EDD DEMO PCB		NO. DC645A
					REV 1
L2-BOTTOM					
DSNR:		MEI	SHT 2 OF 10		DATE: 02/13/03



COMPANY		LINEAR TECHNOLOGY CORPORATION		
TITLE		A/W, LTC3408EDD DEMO PCB	NO. DC645A	REV 1
		BTOM 20DERMAK		
DSNR:	MEI	SHT	OF 10	DATE: 02/13/03