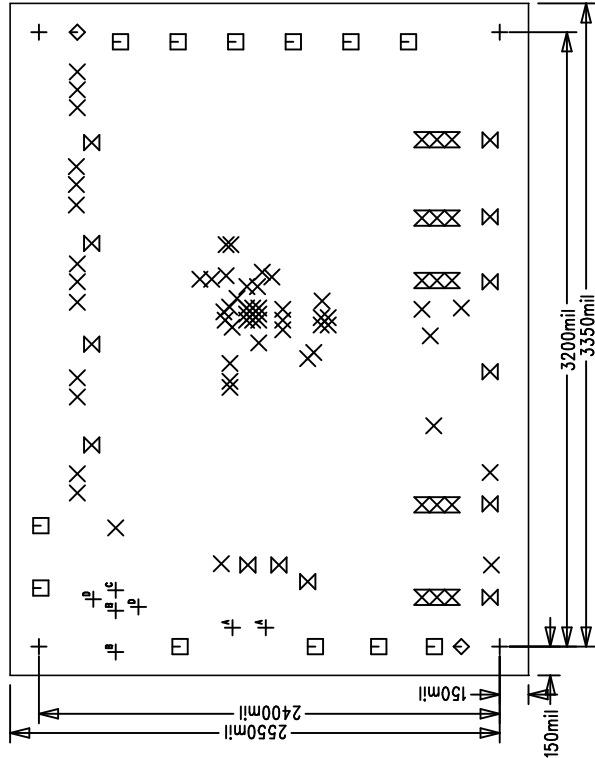
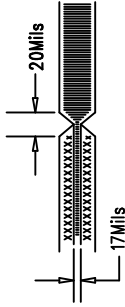


Linear Tech. Corp.
Demo Circuit 631B Rev0



NOTES: Unless Otherwise Specified

1. MATERIAL: 4 LAYERS, 0.062" THK. FR-4 GLASS EPOXY 2 OZ. COPPER CLAD.
2. ALL HOLE SHALL BE PLATED TRHU.
3. PLATE THRU HOLES WITH COPPER .0014 MIN. THICKNESS. ALL HOLE SIZES IN HOLE TABLE ARE AFTER PLATING.
4. SILKSCREEN: WITH WHITE EPOXY NON-CONDUCTIVE INK.
5. NO SILKSCREEN ALLOWED ON PADS LANDS.
6. SOLDER MASK: LPI, GREEN.
7. NO BLOCK SOLDERMASKING OF PADS ROWS.
8. DO NOT MAKE CHANGES ON SILKSCREEN, SUCH AS COMPANY LOGO, QC STAMPS.
9. DO NOT PLATE TOOLING(3PLCS) AND SCORING(26PLCS) HOLES. (Reference Drawing Dwg No. DC205A)
10. SCORING:



SIZE	QTY	SYM	PLATED	TOL
125	4	+	YES	+/-0.0
10	58	X	YES	+/-0.0
94	12	□	YES	+/-0.0
70	2	◇	NO	+/-0.0
63	13	⊗	YES	+/-0.0
31	15	⊗	YES	+/-0.0
35	2	⊕ ^A	NO	+/-0.0
62.99	2	⊕ ^B	NO	+/-0.0
59.06	1	⊕ ^C	YES	+/-0.0
78.74	2	⊕ ^D	YES	+/-0.0

Fabrication Drawing

APPROVALS		LINEAR TECHNOLOGY		1630 McCarthy Blvd. Milpitas, CA 95035 PH: (408)432-1900	
DRAWN	INIT	DATE			
CHECK					
DESIGN	RmB		TITLE: USB Power Solution		
ENGR	John S		LTC3455EUF USB/Adapter to Li-Ion, 3.15V, 1.8V		
			SIZE	Demc Circuit 631B	REV. 0
			SCALE = NONE		SHT 1 of 1