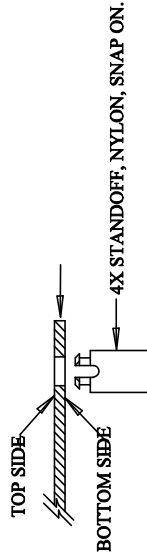
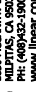


1. WORKMANSHIP SHALL BE IN ACCORDANCE WITH IPC-A-610.
2. ASSEMBLY PROCESS SHALL INCLUDE: REFLOW SOLDER TOP SIDE SMD.
3. PARTS TO OMIT WILL BE SPECIFIED ON THE BILLS OF MATERIAL. LOCATIONS OF OMITTED PARTS SHALL BE FREE OF SOLDER. MASK THE SOLDER STENCIL WHERE SMT PARTS ARE OMITTED.
4. INSTALL SHUNTS AS SHOWN ON ASSY DRAWING.
5. DEPANALIZE BOARDS AFTER ASSEMBLY AND ROUTE-OUT THE BREAKOUT TABS ON FOUR SIDES OF THE BOARD EDGE.
6. DO NOT APPLY ANY KIND OF ASSEMBLY STAMP OR QA STAMP TO ANY BOARD.
7. INSTALL 4 STANDOFFS AT 4 LOCATIONS AS SHOWN BELOW:



APPROVALS		 <div> 1630 MCARDY BLVD MILFORD, MA 01835 TEL: 978.676.8000 www.linear.com LTC CONFIDENTIAL - FOR CUSTOMER USE ONLY </div>	
PCB DES.	✕8		
APP ENG.	Dilano R.		
TITLE: TOP ASSEMBLY DRAWING		Quad Powered Ethernet Controller w/AC Disconnect	
SIZE	IC NO. LTC4259AGW	REV.	
N/A	DEMO CIRCUIT 609C	1	
SCALE = NONE		FILENAME: DC609C-1.PCB	SHT 1 OF 2