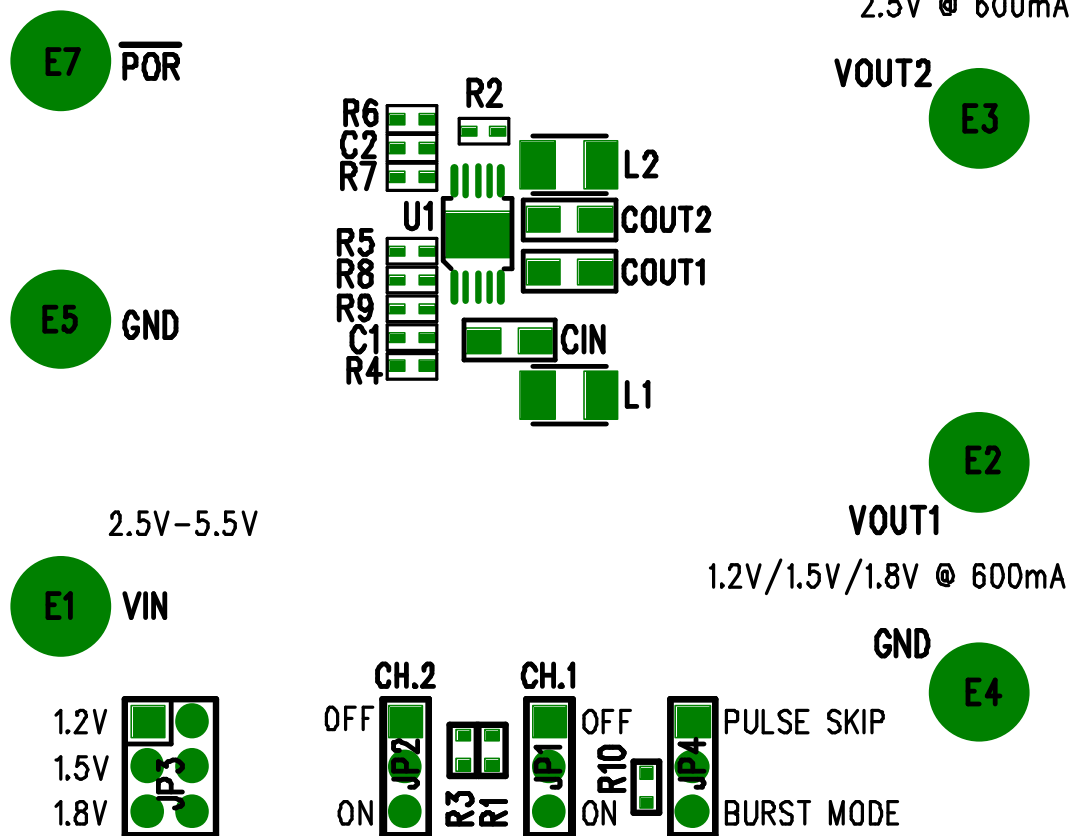




LTC3407EMS DEMO CIRCUIT 568A

(408) 432-1900
www.linear.com

DUAL DC/DC CONVERTER



POSITION OF SHUNT: JP1 - OFF
JP2 - ON
JP3 - 1.8V
JP4 - BURST MODE

| | | | | | | | |
|---------|--|-------------------------------|--|------------|--|----------------|--|
| COMPANY | | LINEAR TECHNOLOGY CORPORATION | | | | | |
| TITLE | | A/W, LTC3407EMS DEMO PCB | | NO. DC568A | | REV 3 | |
| | | | | | | | |
| | | TOP SILKSCREEN | | | | | |
| DSNR: | | MEI | | SHT OF 10 | | DATE: 03/12/03 | |