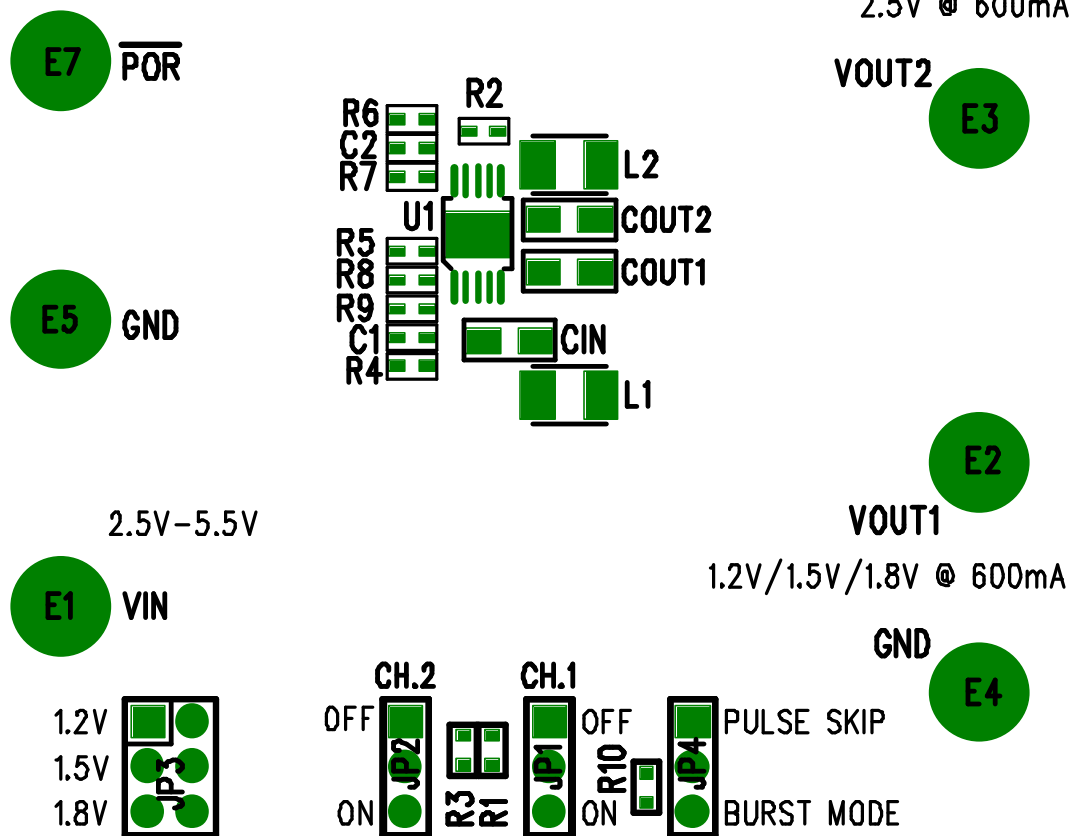




# LTC3407EMS DEMO CIRCUIT 568A

(408) 432-1900  
www.linear.com

## DUAL DC/DC CONVERTER



LTC Confidential - For Customer Use Only

POSITION OF SHUNT: JP1 - OFF

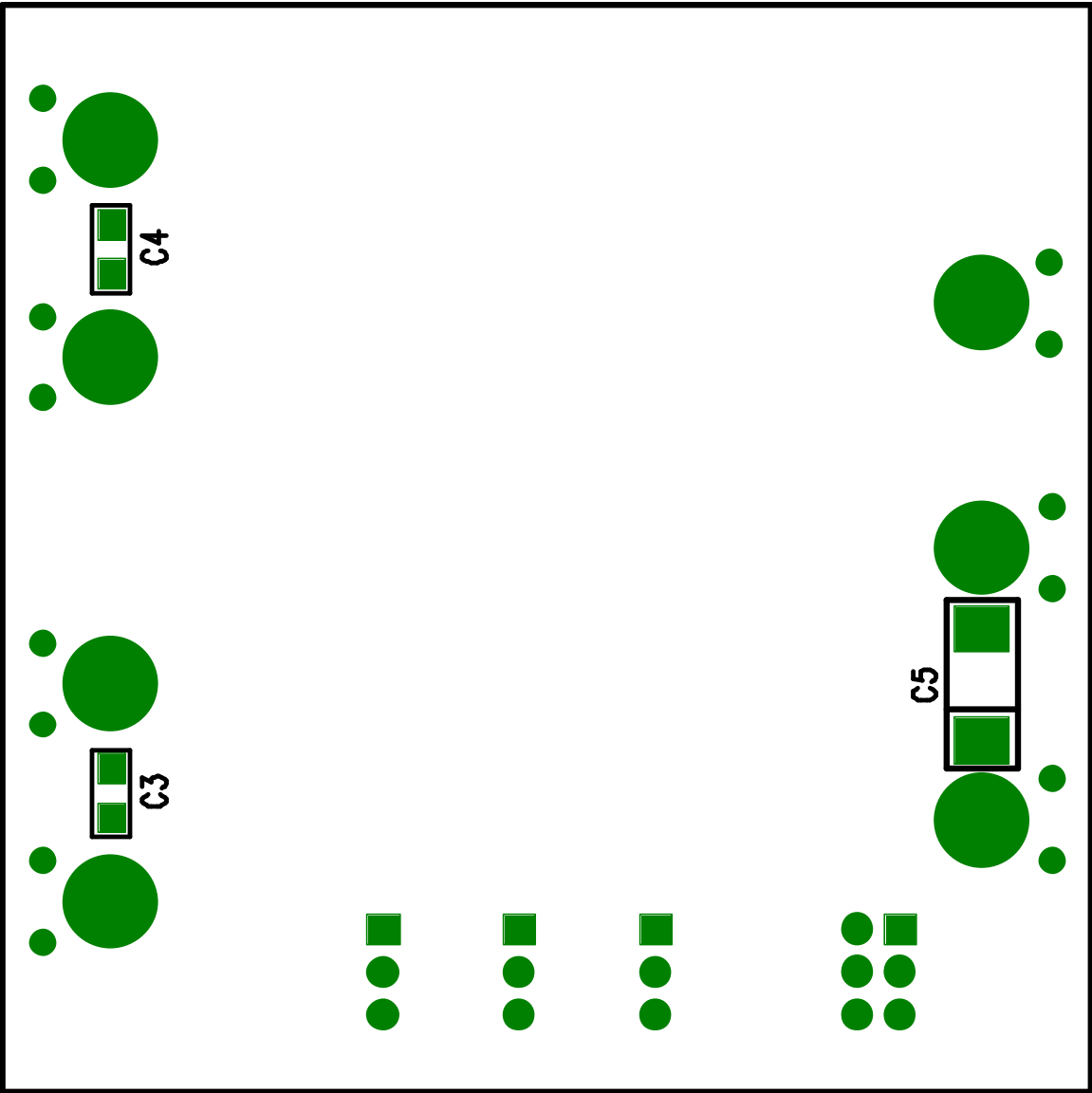
JP2 - ON

JP3 - 1.8V

JP4 - BURST MODE

COMPANY			
LINEAR TECHNOLOGY CORPORATION			
TITLE		NO.	REV
A/W, LTC3407EMS DEMO PCB		DC568A	3
TOP SILKSCREEN			
DSNR:	MEI	SHT OF 10	DATE: 03/12/03

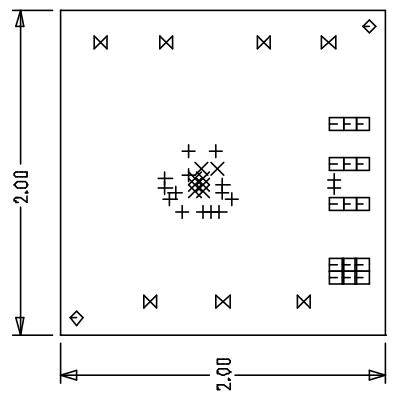
D2NR: MEI			2HT		OF 10		DATE: 03\15\03	
							BOTTOM SILKSCREEN	
							TITLE A\W, LTC3407EMS DEMO PCB	
					NO. DC268A		REV 3	
COMPANY LINEAR TECHNOLOGY CORPORATION								



LTC CONFIDENTIAL – For Customer Use Only

DWG NO DC568A SH 1 REV 3

REVISION HISTORY			
ECO	REV	DESCRIPTION	DATE
			APPROVED



- NOTES: UNLESS OTHERWISE SPECIFIED,
1. ARTWORK P/N DC568A REV 3.
  2. FAB PER IPC-A-600
  3. MATERIAL: EPOXY FIBERGLASS, NEMA GRADE FR-4 .082 +/- .005 INCH THICKNESS WITH 2 OZ. COPPER FINISH ON TWO OUTER LAYERS AND 2 OZ. COPPER ON TWO INTERNAL LAYERS. FLAMABILITY RATING: 94 V-2 MINIMUM.
  4. SIZE: CUT TO DIMENSIONS AND TOLERANCES SHOWN. 0.00 ARE PRIMARY DATUMS.
  5. BOARD: SELECTIVE PLATED BOARD. SOLDER MASK OVER BARE COPPER, COLOR, GREEN LPI. WHITE TIN IMMERSION (OMIKRON) BOTH SIDES. SILKSCREEN BOTH SIDES WITH WHITE NON-CONDUCTIVE INK.
  6. DRILL: ALL HOLES SHALL BE DRILLED +/- .003 INCH WITH RESPECT TO CTR. OF DRILLED PAD. ALL HOLES FINISHED SIZE AFTER PLATING.
  7. DROP ALL UNUSED PADS ON INNER LAYERS.
  8. DO NOT ALTER ARTWORK e.g. TO ADD LOGO OR DATE CODE.

HOLE LEGEND

TOLERANCE	SIZE	QTY	SYM	PLTD
+/-0.003	10	16	+	PLTD
+/-0.003	20	8	X	PLTD
+/-0.003	35	15	□	PLTD
+/-0.005	70	2	◇	NPLTD
+/-0.005	95	7	⊗	PLTD

UNLESS OTHERWISE SPECIFIED  
DIMENSIONS ARE IN INCHES  
TOLERANCES ON ANGLE ±1 °  
2 PLACE ±01 3 PLACE ±005  
INTERPRET DIM AND TOL  
PER ASME Y14.5M - 1994

THIRD ANGLE PROJECTION

DO NOT SCALE DRAWING

CONTRACT NO

APPROVALS

DRAWN MEI

CHECKED

APPROVED

ENGINEER

DATE 02/18/03

LINEAR TECHNOLOGY

1630 McCarthy Blvd.  
Milpitas, CA 95035  
Phone: (408)432-1900  
Fax: (408)434-0507

TITLE

FAB, LTC3407EMS DUAL DC/DC CONVERTER

SIZE A

CAGE CODE

DWG NO DC568A

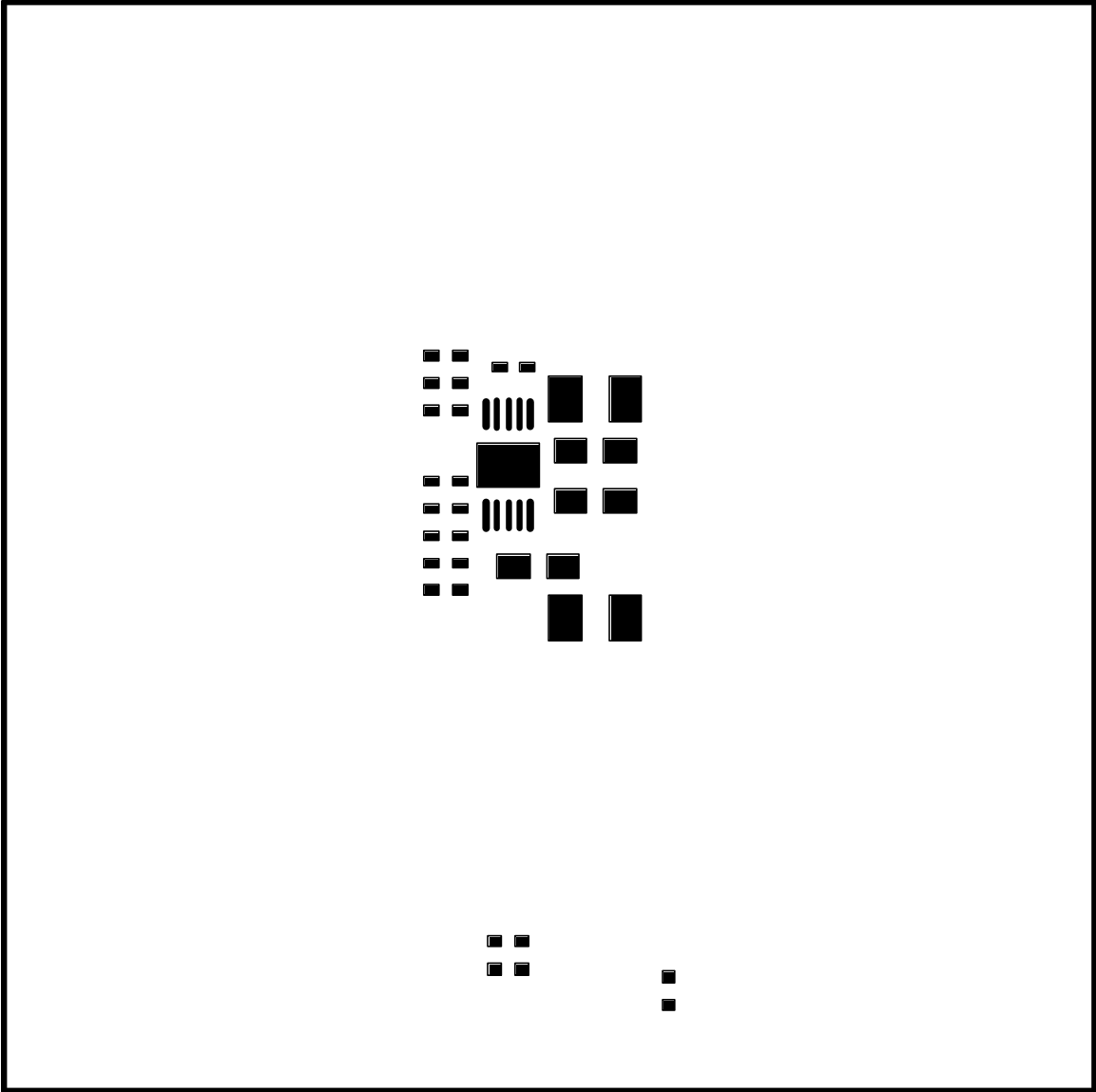
REV 3

SCALE 1/1

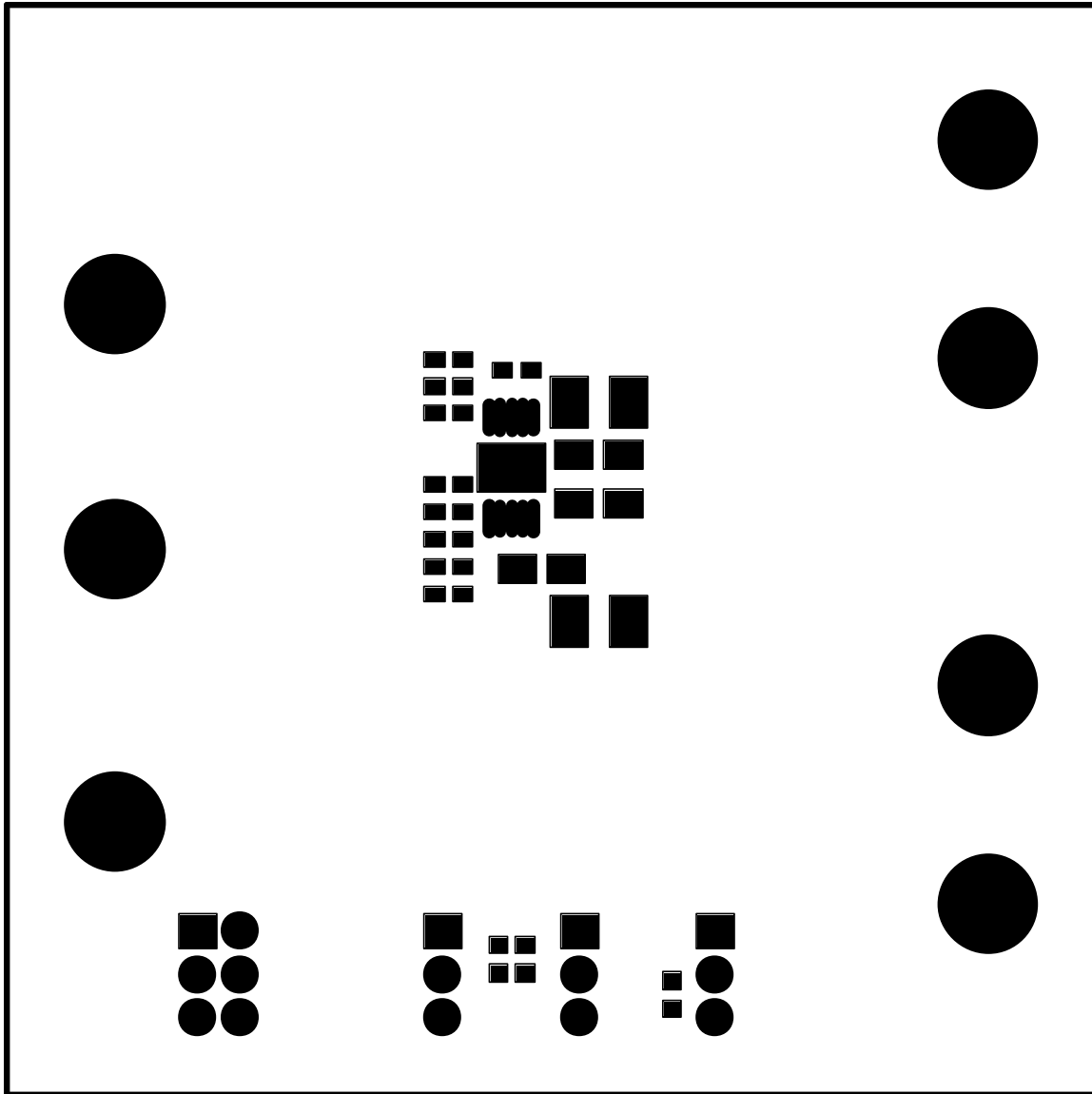
FILENAME: 568A-3.PCB

SHEET 1 OF 1

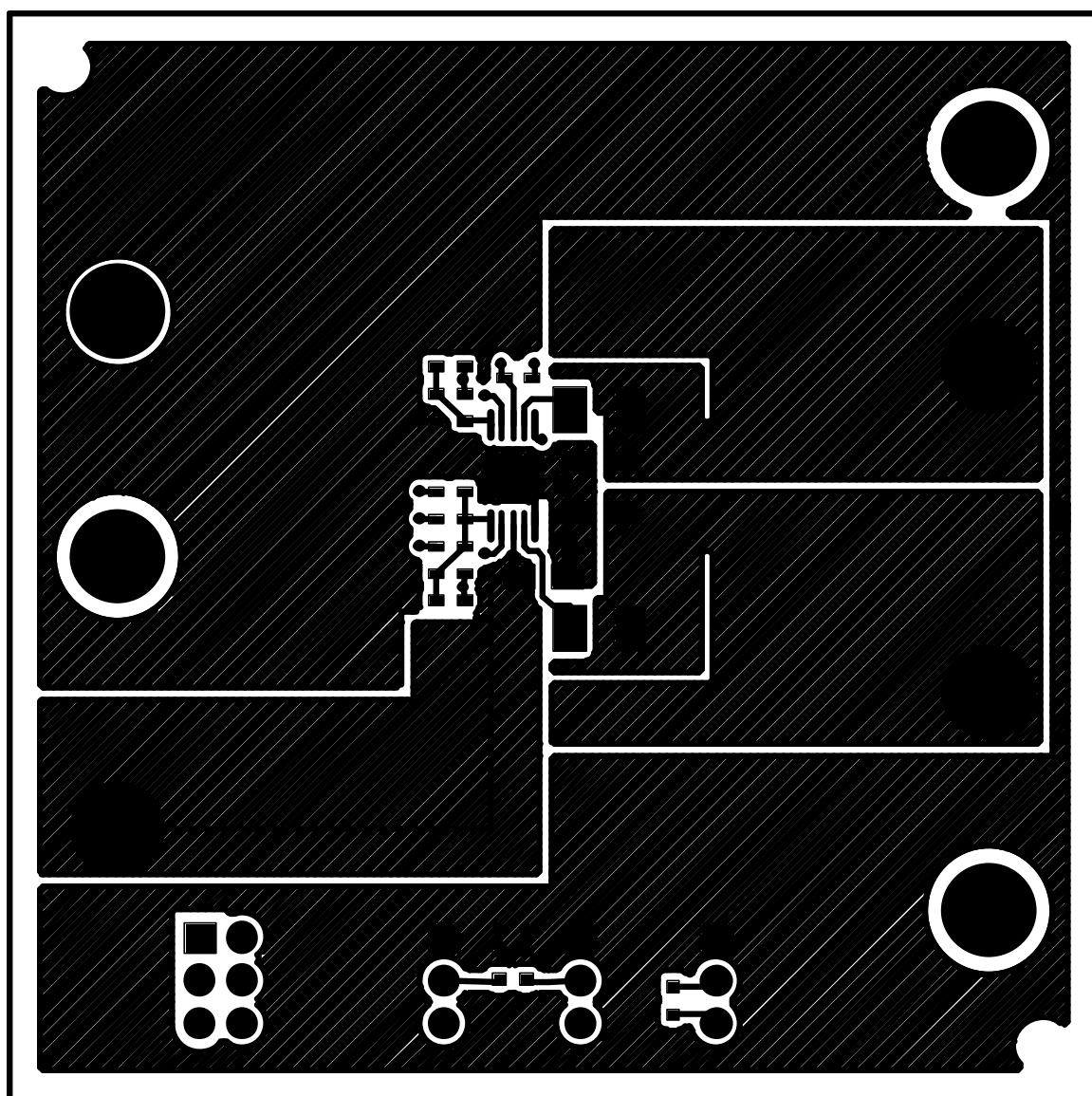




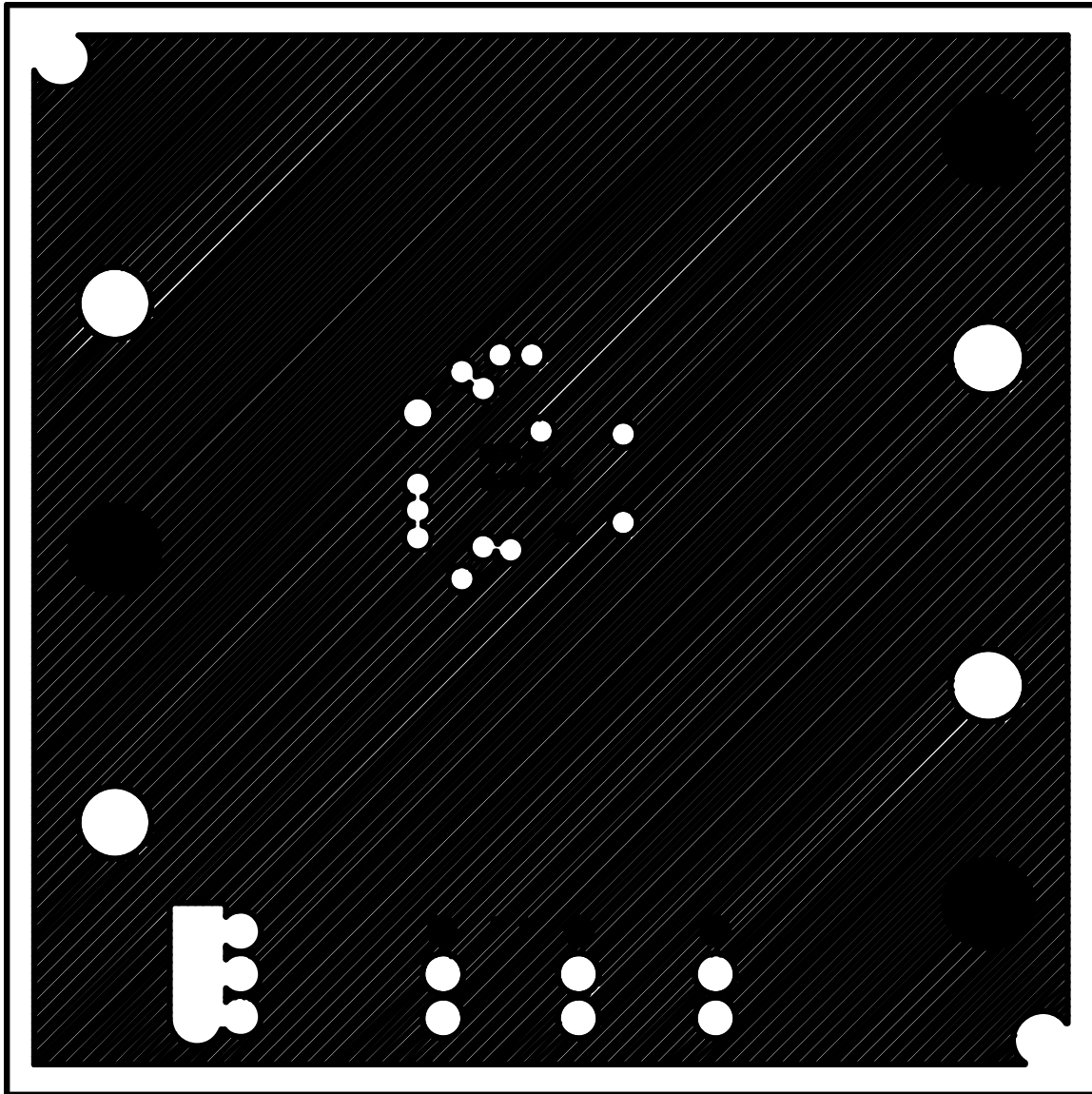
COMPANY			LINEAR TECHNOLOGY CORPORATION		
TITLE		A/W, LTC3407EMS DEMO PCB		NO.	DC568A
				REV	3
				TOP PASTE	
DSNR:	MEI	SHT	OF	10	DATE: 03/12/03



COMPANY		LINEAR TECHNOLOGY CORPORATION							
TITLE		A/W, LTC3407EMS DEMO PCB		NO. DC568A		REV 3			
		TOP SOLDERMASK							
DSNR:		MEI		SHT		OF 10		DATE: 03/12/03	

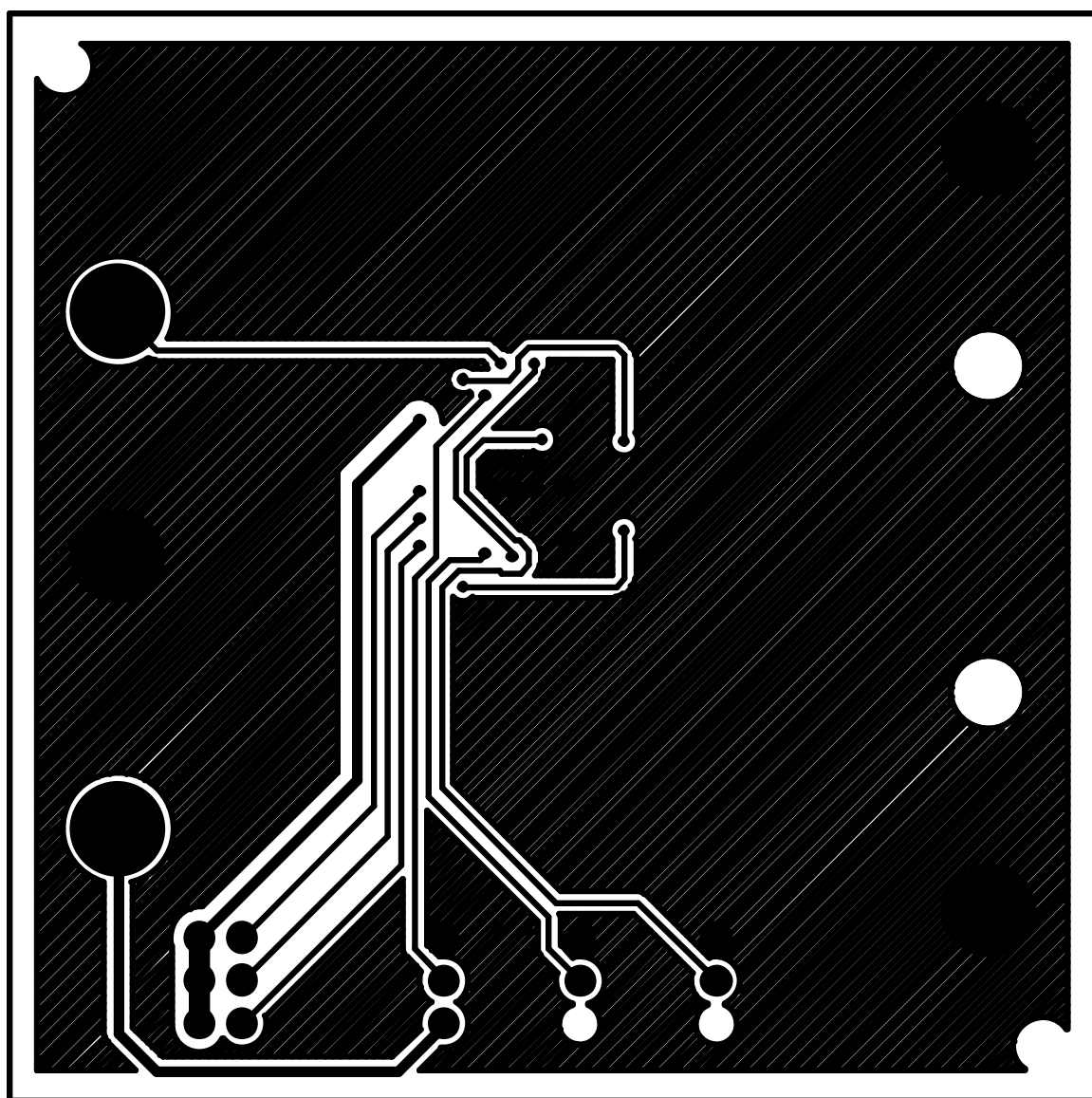


COMPANY      LINEAR TECHNOLOGY CORPORATION			
TITLE    A/W, LTC3407EMS DEMO PCB		NO.    DC568A	REV    3
L1-COMPONENT SIDE			
DSNR:    MEI	SHT    1    OF    10		DATE: 03/12/03

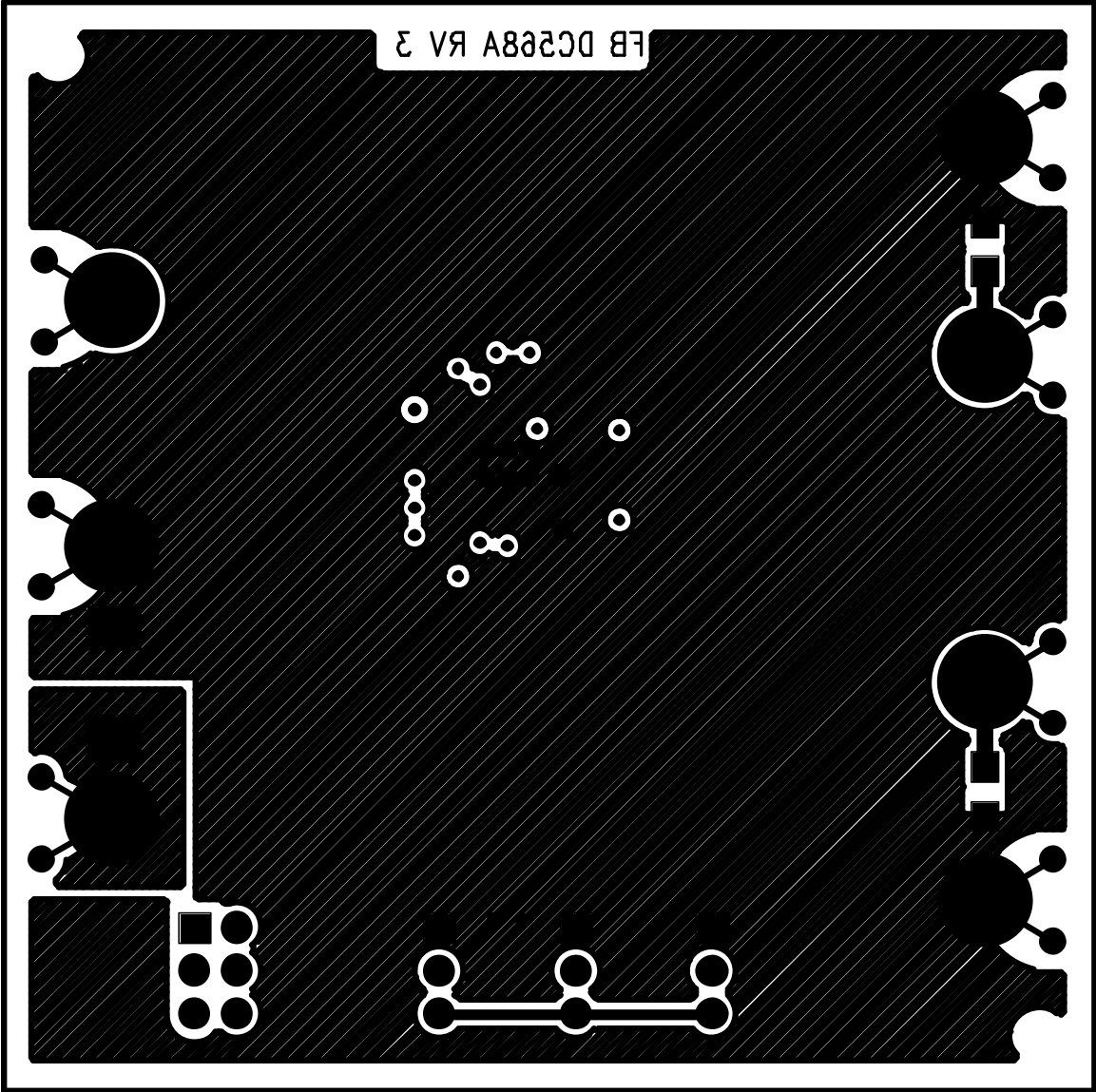


COMPANY			LINEAR TECHNOLOGY CORPORATION		
TITLE		A/W, LTC3407EMS DEMO PCB		NO.	DC568A
				REV	3
L2-GND PLANE					
DSNR:	MEI	SHT 2 OF 10		DATE: 03/12/03	

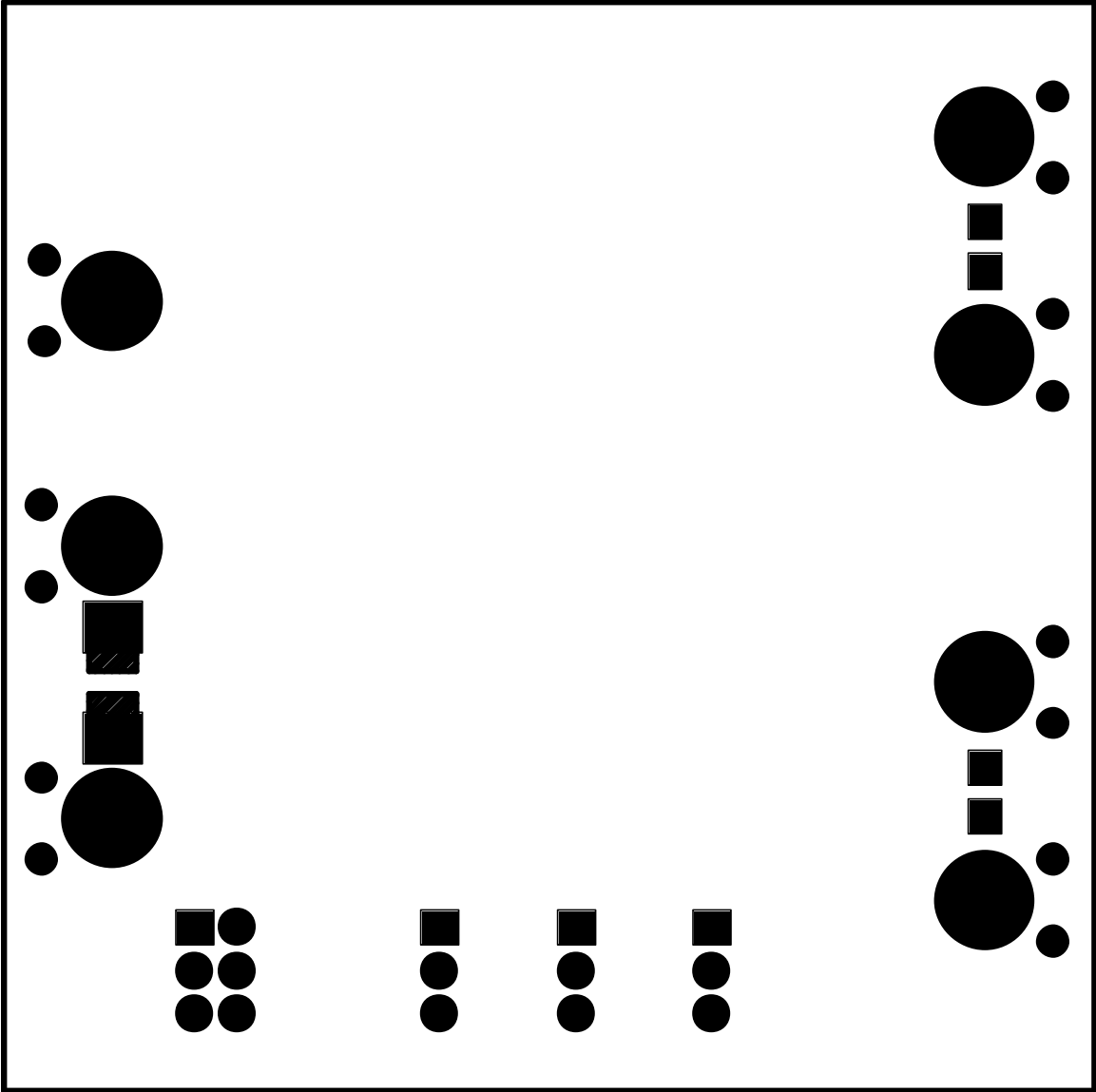




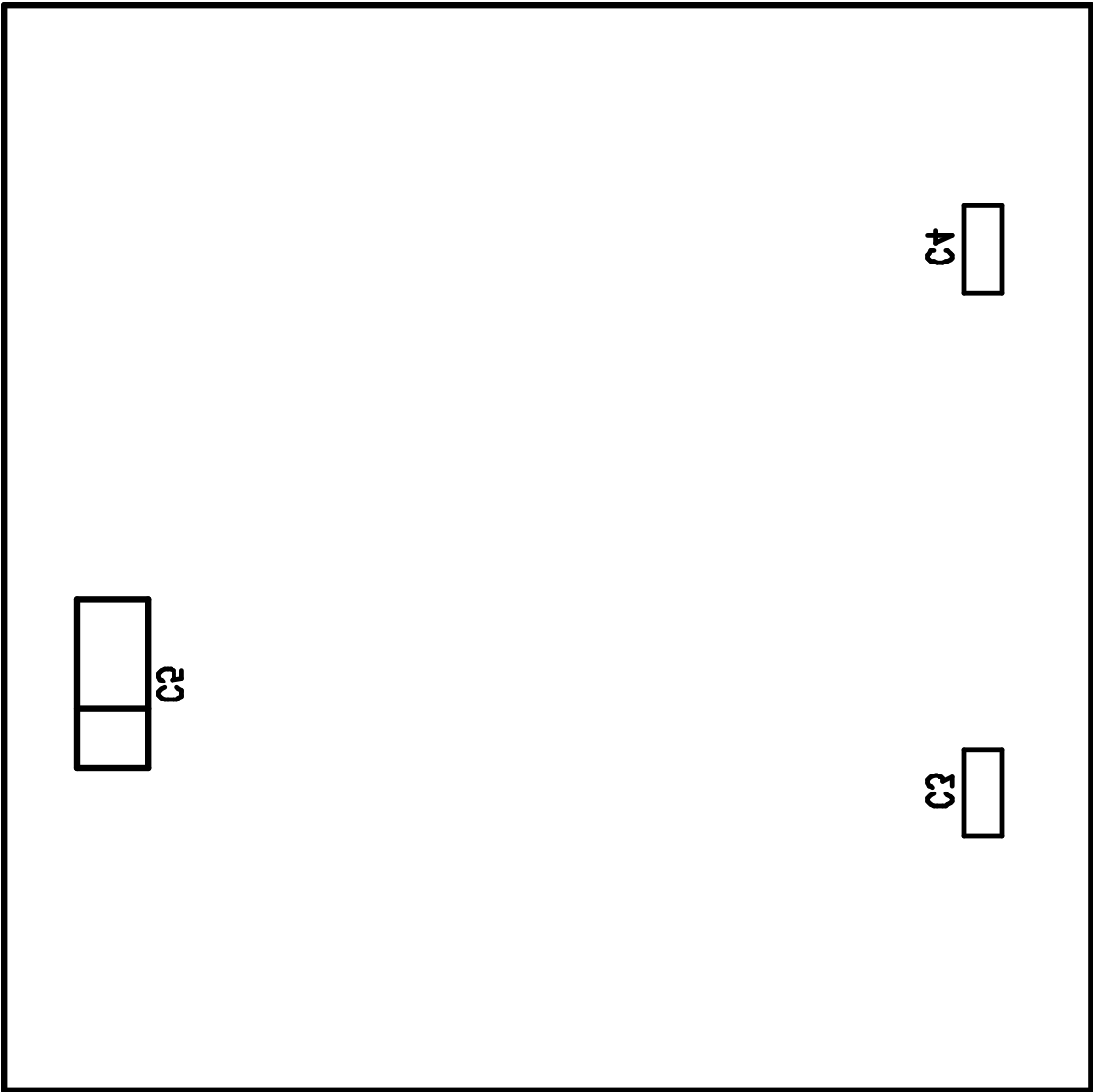
COMPANY		LINEAR TECHNOLOGY CORPORATION							
TITLE		A/W, LTC3407EMS DEMO PCB		NO.	DC568A	REV	3		
				L3-GND PLANE/TRACE					
DSNR:		MEI		SHT		3 OF 10		DATE: 03/12/03	



COMPANY			LINEAR TECHNOLOGY CORPORATION		
TITLE		A/W, LTC3407EMS DEMO PCB		NO.	DC568A
				REV	3
		L4-20LDER SIDE			
L4-BOTTOM					
DSNR:	MEI	SHT 4 OF 10		DATE: 03/12/03	



COMPANY			LINEAR TECHNOLOGY CORPORATION		
TITLE		A/W, LTC3407EMS DEMO PCB		NO.	DC568A
				REV	3
		BTOM 20DERM2K			
DSNR:	MEI	SHT	OF 10	DATE: 03/12/03	



COMPANY			LINEAR TECHNOLOGY CORPORATION		
TITLE		A/W, LTC3407EMS DEMO PCB		NO.	DC568A
				REV	3
				BOTTOM SILKSCREEN	
DSNR:		MEI	SHT	OF	10
				DATE: 03/12/03	