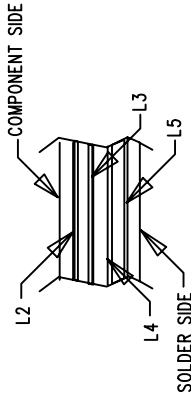
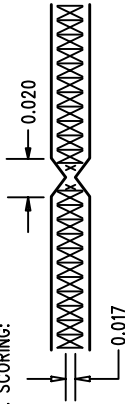


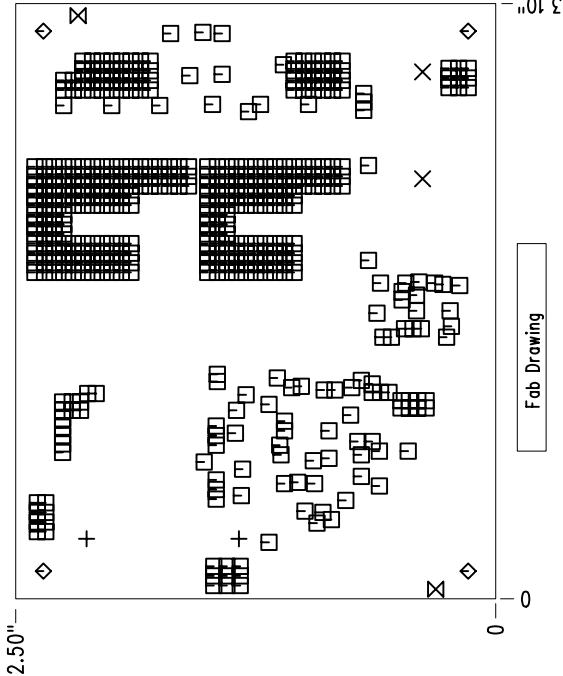
REVISIONS		
REV	DESCRIPTION	DATE

NOTES : Unless Otherwise Specified


1. FAB PER IPC-A-600.
2. MATERIAL: EPOXY FIBERGLASS, NEMA GRADE FR-4. 4 OZ. COPPER ON OUTER LAYER, 2 OZ. COPPER ON INNER LAYER, THICKNESS .062 +/- .006 TOTAL OF 6 LAYERS. FLAMABILITY RATING: 94 V-0 MINIMUM .
3. DRILLING: DRILL HOLES PER SCHEDULE. PLATE THROUGH HOLES WITH COPPER. .001 INCH THICK MIN. ALL HOLE SIZES ARE SPECIFIED AFTER PLATING. HOLE LOCATION TOLERANCES ARE +/- .003 INCH IN RELATION TO CENTER
4. SOLDER MASK : SMOBC USING LPI BOTH SIDES COLOR GREEN.
5. SILKSCREEN : USING WHITE NON-CONDUCTIVE EPOXY INK.
6. DO NOT ALTER ARTWORK e.g. TO ADD LOGO OR DATE CODE.
7. SCORING:

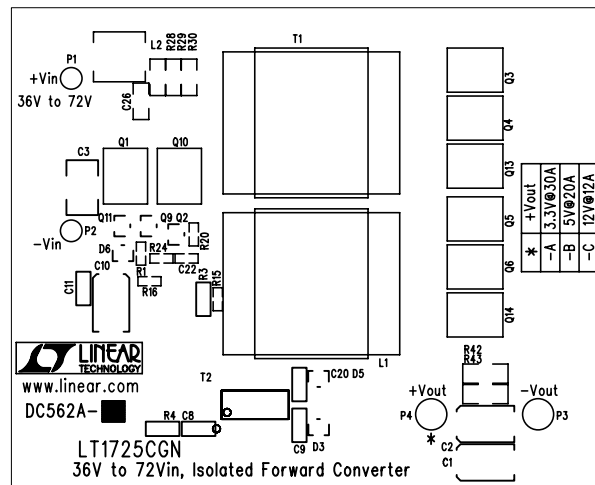


FAB DRAWING

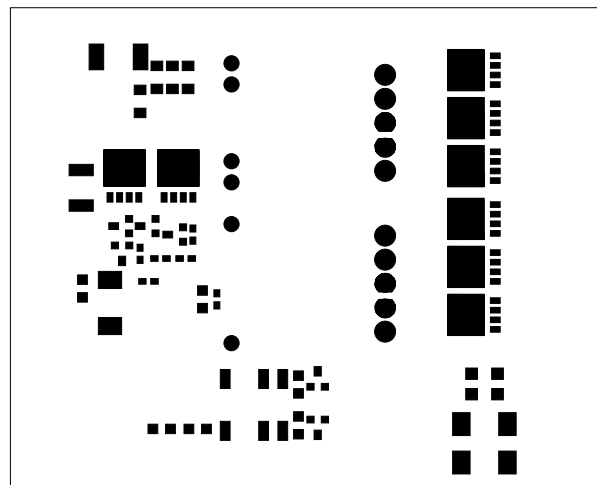


SIZE	QTY	SYM	PLTD
43	2	+	PLTD
94	2	×	PLTD
15	437	□	PLTD
125	4	◇	PLTD
70	2	⊗	NPLTD

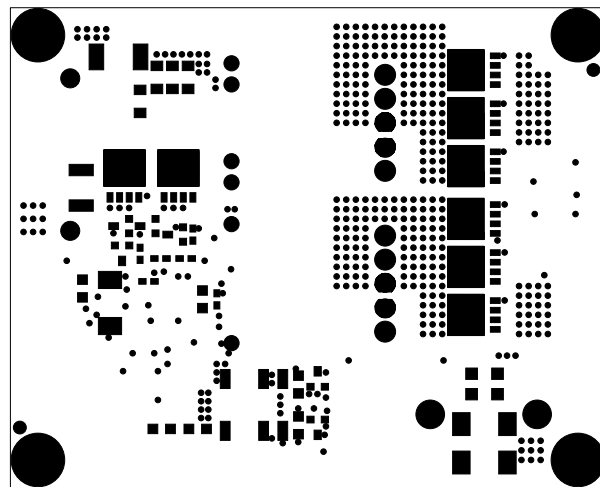
APPROVALS					1630 McCarthy Blvd. Milpitas, CA 95035 PH: (408)432-1900	
	DRAWN	INIT	DATE			
	CHECK					
	DESIGN	JUNE WU	9/4/02	TITLE: LT1725CGN, 36V-72Vin, Isolated Forward Converter		
	ENGR	KURK M.	9/4/02			
				SIZE	A	REV. A
					DC562A	
SCALE = NONE			DES-230573		SHT 1 of 1	



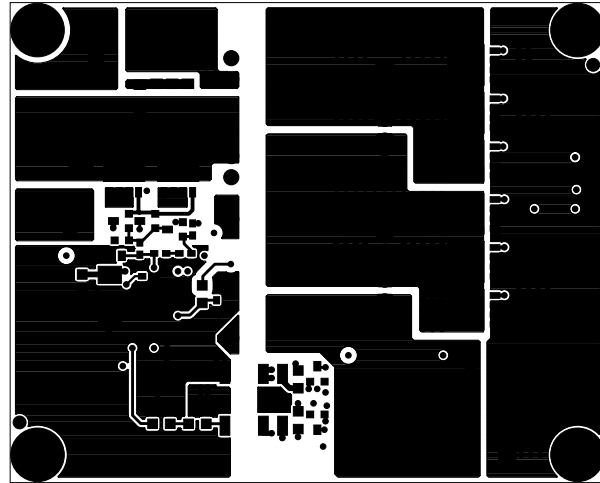
Silkscreen Top



Paste Mask Top



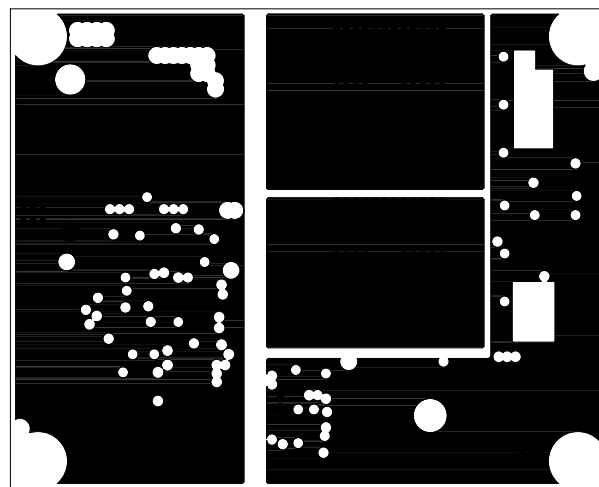
Solder Mask top



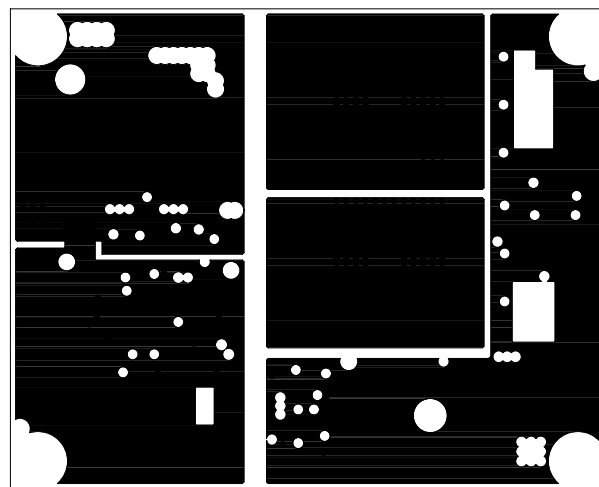
Component Side



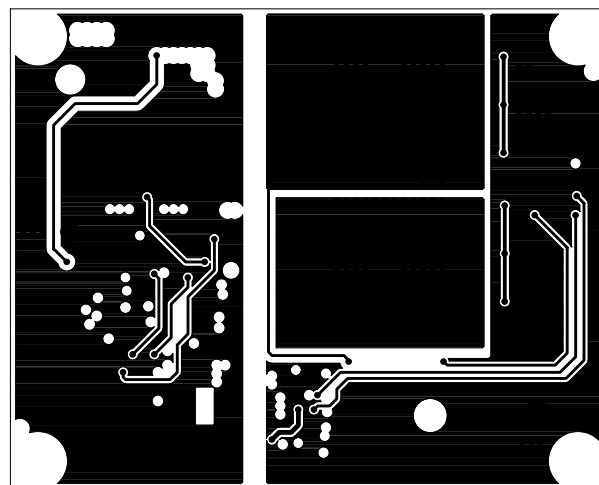
L2 POWER GND



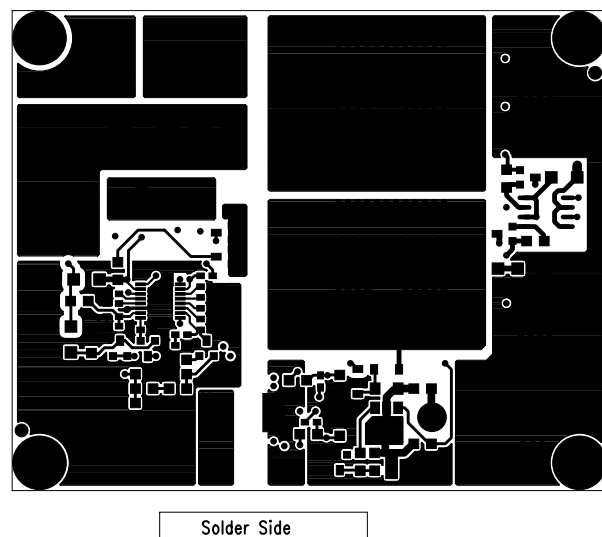
L3 GND(CAP)

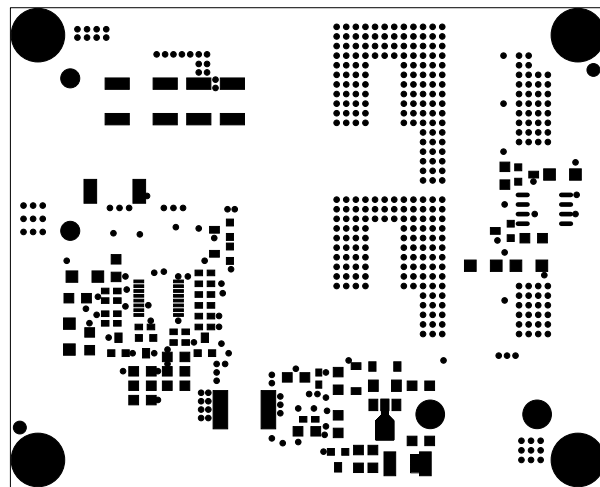


L4 SIGNAL GND

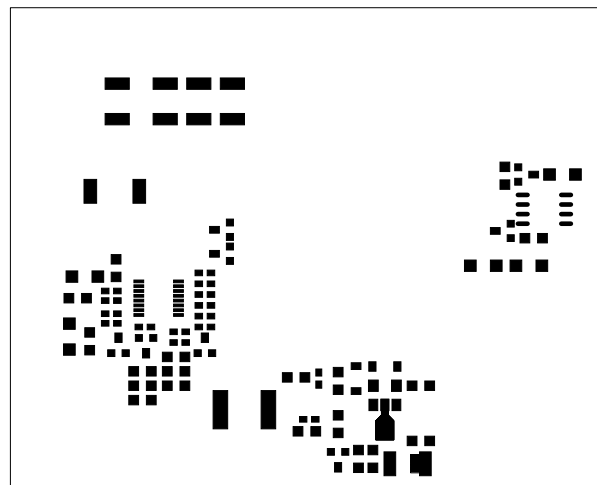


L5





Solder Mask bottom



Paste Mask Bottom

