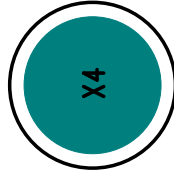




LTC4211CMS

(408) 432-1900 www.linear.com



TP6 FAULT


TP1 VIN
2.5V-16.5V

TP2 ON/OFF

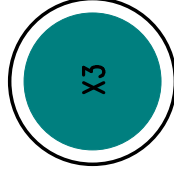
TP5 GND

TP7 RESET



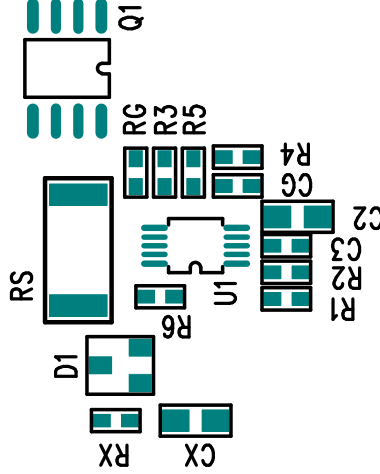
Demo Circuit 536A - 
HOTSWAP CONTROLLER WITH
MULTIFUNCTION CURRENT CONTROL

LTC CONFIDENTIAL - FOR CUSTOMER USE ONLY



TP4 VOUT
2.5V-16.5V

TP3 GND



COMPANY LINEAR TECHNOLOGY CORPORATION		
TITLE A/W, LTC4211CMS DEMO	NO. DC536A	REV 1
		SILKSCREEN TOP
DSNR: MEI	SHT. 5 OF 10	DATE: 06/20/02