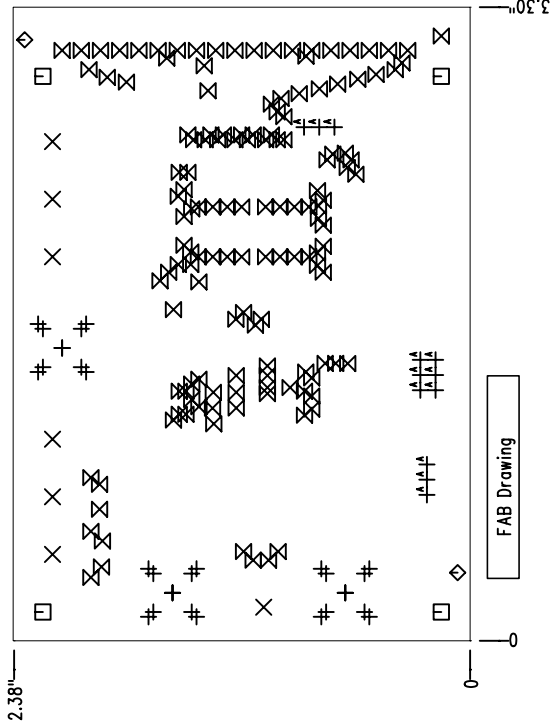
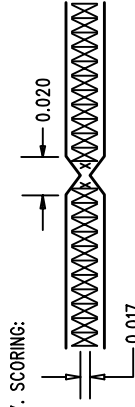


| REVISIONS | | | |
|-----------|-------------|------|------|
| REV | DESCRIPTION | APPR | DATE |
| A | | | |



NOTES : Unless Otherwise Specified

1. FAB PER IPC-A-600.
2. MATERIAL: EPOXY FIBERGLASS, NEMA GRADE FR-4.
2 OZ. COPPER FINISHED ON OUTER LAYERS.
1 OZ. COPPER FINISHED ON INNER LAYERS.
THICKNESS .062 +/- .006 TOTAL OF 4 LAYERS.
FLAMABILITY RATING: 94 V-0 MINIMUM .
3. DRILLING: DRILL HOLES PER SCHEDULE. PLATE THROUGH
HOLES WITH COPPER, .001 INCH THICK MIN. ALL
HOLE SIZES ARE SPECIFIED AFTER PLATING.
HOLE LOCATION TOLERANCES ARE +/- .003
INCH IN RELATION TO CENTER
4. SOLDER MASK : SMOBC USING LPI BOTH SIDES COLOR GREEN.
5. SILKSCREEN : USING WHITE NON-CONDUCTIVE EPOXY INK.
6. DO NOT ALTER ARTWORK e.g. TO ADD LOGO OR DATE CODE.
7. SCORING:



FAB DRAWING

| APPROVALS | | LINEAR TECHNOLOGY | | 1630 McCarthy Blvd. Milpitas, CA 95035 PH: (408)432-1900 | |
|---------------------------------------|----------|-------------------|------------|--|--|
| DRAWN | INIT | DATE | | | |
| CHECK | | | | | |
| DESIGN | JUNE WU | 4/30/02 | | | |
| ENGR | Rich Ray | 4/30/02 | | | |
| | | | | | |
| | | | | | |
| TITLE: LTC1740CG, 14-BIT / 6 MSPS ADC | | | | | |
| SIZE A | | | REV. A | | |
| SCALE = NONE | | | SHT 1 of 1 | | |