



(408) 432-1900

www.linear.com

LTC Confidential –
For Customer Use Only

LT3433EFE

DEMO CIRCUIT 527A

STEP-UP/STEP-DOWN CONVERTER WITH BURST MODE

GND

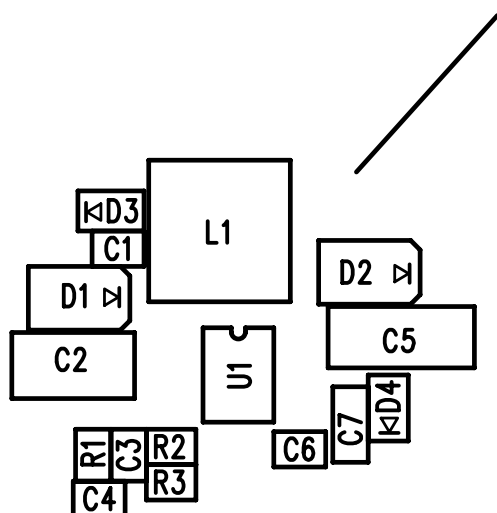
4V to 60V
VIN

GND

5V@400mA
SEE LOAD
CURRENT TABLE

VOUT

SHDN
R5



LOAD CURRENT TABLE	
VIN	IOUT (MAX)
4V	125mA
12V	400mA
24V	360mA
48V	340mA

OFF
ON
BURST_EN

COMPANY LINEAR TECHNOLOGY CORPORATION		
TITLE A/W, LT3433EFE DEMO PCB	NO. DC527A	REV 6
		SILKSCREEN TOP
DSNR: MEI	SHT. 5 OF 10	DATE: 06/23/03