



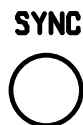
DEMO CIRCUIT 476A
www.linear.com
(408) 432-1900

LT1765EFE

WIDE INPUT RANGE 1.25 MHz STEP-DOWN DC/DC/CONVERTER

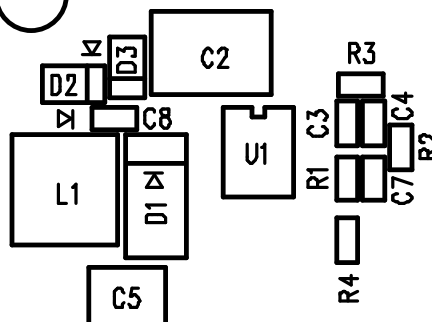
X1

***3V to
25V**



*VIN MINIMUM	VOUT
7	5
4.7	3.3
3.7	2.5
3	1.8

SEE QUICK START GUIDE.



VOUT



5V 3.3V

**5V/3.3V
at 2A**



X2

VOUT

GND

SHDN

LTC CONFIDENTIAL- FOR CUSTOMER USE ONLY

COMPANY LINEAR TECHNOLOGY CORPORATION		
TITLE A/W, LT1765 DEMO PCB	NO. DC476A	REV 2
		SILKSCREEN TOP
DSNR: MEI	SHT. 5 OF 10	DATE: 03/26/02