



DEMO CIRCUIT 476A

www.linear.com

(408) 432-1900

LT1765EFE

WIDE INPUT RANGE 1.25 MHz STEP-DOWN DC/DC/CONVERTER

X1

*3V to
25V

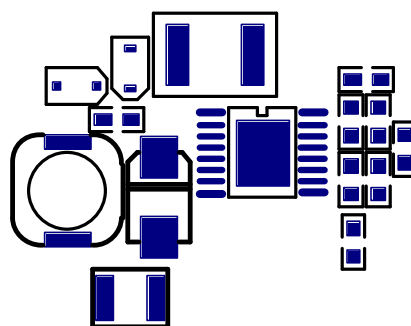
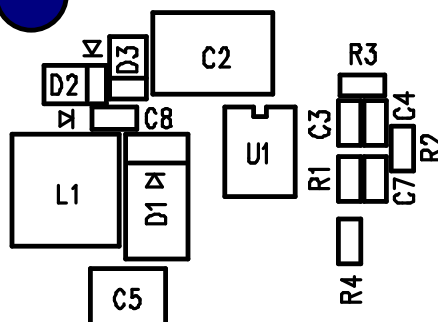


SYNC



*VIN MINIMUM	VOUT
7	5
4.7	3.3
3.7	2.5
3	1.8

SEE QUICK START GUIDE.



VOUT



5V 3.3V

5V/3.3V
at 2A



VOUT

GND

SHDN

X2

LTC CONFIDENTIAL- FOR CUSTOMER USE ONLY

COMPANY LINEAR TECHNOLOGY CORPORATION		
TITLE A/W, LT1765 DEMO PCB	NO. DC476A	REV 2
		SILKSCREEN TOP
DSNR: MEI	SHT. 5 OF 10	DATE: 03/26/02