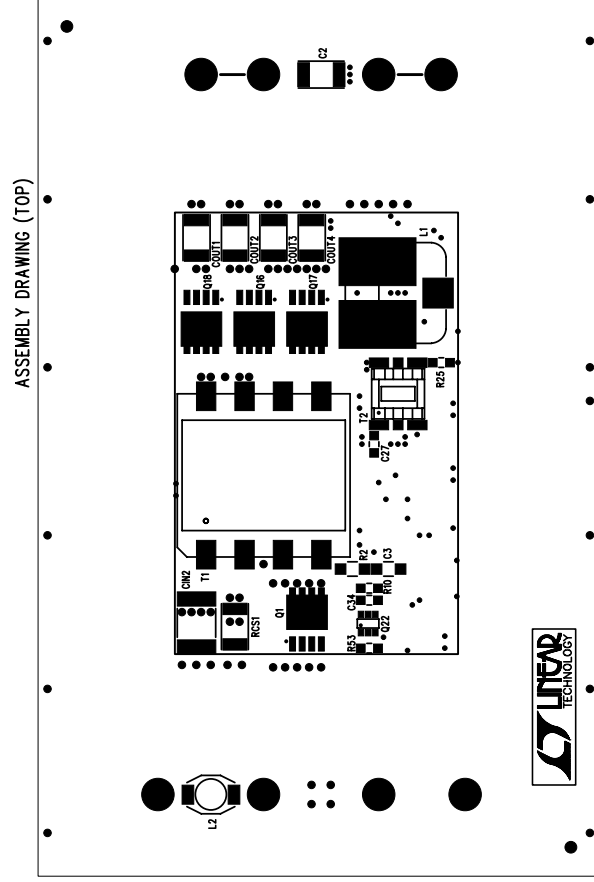


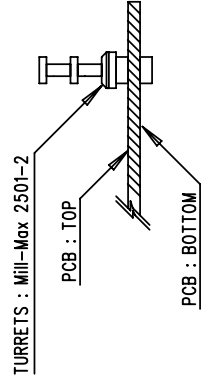
NOTES :

- 1. Unused SMD components should be free of Solder.**




FOR ASSEMBLY:

Install Hardwares at These Locations (TP1-TP4,TP6,TP7)



Assembly Top Drawing

APPROVALS		1630 McCarthy Blvd. Milpitas, CA 95035 PH: (408)432-1900	
		 LINEAR TECHNOLOGY	
DRAWN _____ CHECK _____ DESIGN _____ ENGR _____		TITLE: 48Vin to 3.3V, 25A Isolated DC/DC Converter LT1950EEN, LTC698EGN, LTC693-1CS8	
		SIZE A	DC442 REV. A
		DES- 0000	
SCALE = NONE		SHT 1 of 1	