



(408) 432-1900

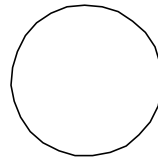
www.linear.com

LTC Confidential - For Customer Use Only

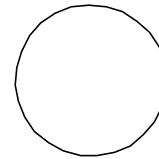
LTC1929CG-PG/LTC4350GN

DC439A-

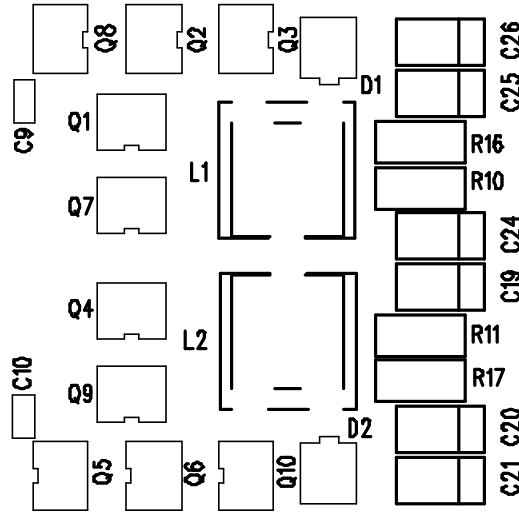
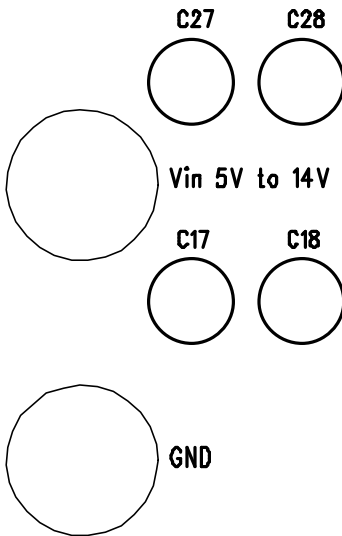
VSEN\_BUS+ VSEN\_BUS-



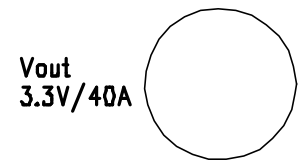
GND



Vout\_BUS  
3.3V/40A



R14 VSEN+



GND

R13 VSEN-

JP2  
150KHz 300KHz

DUAL PHASE, STEP-DOWN POWER SUPPLY  
WITH HOT SWAPPABLE LOAD SHARE MODULE

PGOOD EXTVCC ITH PLLIN SGND EAIN RUN

COMPANY LINEAR TECHNOLOGY CORPORATION			
TITLE A/W,LTC1929PG DEMO PCB		NO. DC439A	REV 3
		SILKSCREEN TOP	
DSNR: MEI		SHT. 7 OF 12	DATE: 01-08-02