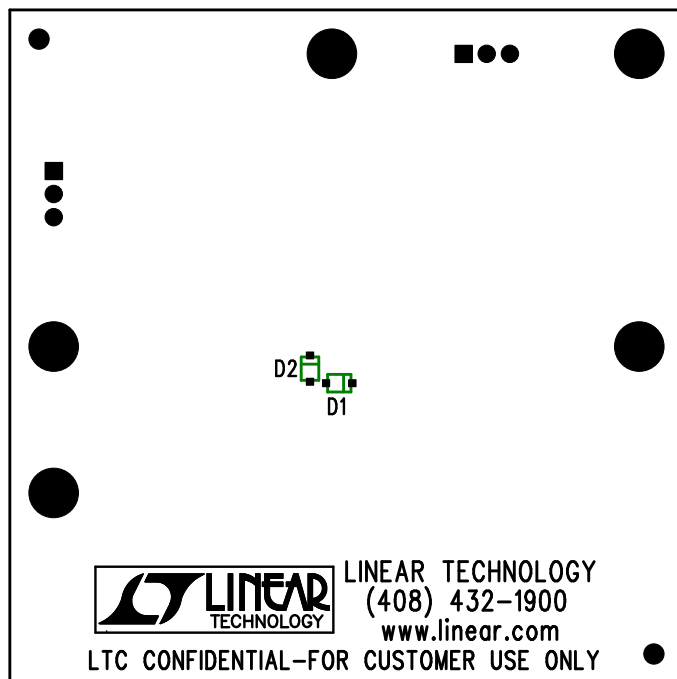



REVISIONS			
REV	DESCRIPTION	APPR	DATE
B	PROTOTYPE RELEASE		



NOTES: UNLESS OTHERWISE SPECIFIED

1. WORKMANSHIP SHALL BE IN ACCORDANCE WITH IPC-A-610.
2. NO SHUNT.
3. PARTS TO OMIT WILL BE SPECIFIED ON THE BILLS OF MATERIAL. LOCATIONS OF OMITTED PARTS SHALL BE FREE OF SOLDER. MASK THE SOLDER STENCIL WHERE SMT PARTS ARE OMITTED.
4. DEPANELIZE BOARDS AFTER ASSEMBLY AND ROUTE-OUT THE BREAKOUT TABS ON FOUR SIDES OF THE BOARD EDGE.
5. ASSY PROCESSES SHALL INCLUDE: REFLOW SOLDER TOP SIDE SMD.

APPROVALS			 LINEAR TECHNOLOGY		1630 McCarthy Blvd. Milpitas, CA 95035 PH: (408)432-1900	
	INIT	DATE				
DRAWN			TITLE: BOTTOM ASSEMBLY DRAWING 1MHz SYNCHRONOUS BUCK-BOOST			
CHECK						
DESIGN	KIM T.	05-04-05				
ENGR	DONGYAN Z.	05-04-05				
			SIZE	DEMO	REV.	
			A	DC425B - LTC3440EMS	B	
SCALE = NONE			DES- 0000		SHT 2 of 2	