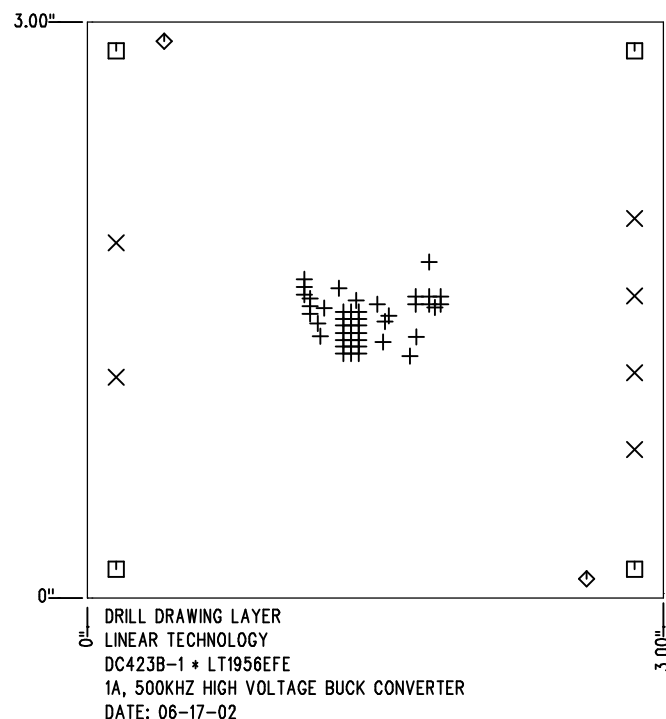


REVISIONS			
REV	DESCRIPTION	APPR	DATE
A	PROTOTYPE RELEASE		

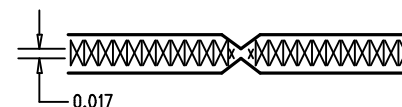


SHOWN FROM COMPONENT SIDE


SIZE	QTY	SYM	PLTD
0.01	46	+	PLTD
0.094	6	×	PLTD
0.125	4	□	PLTD
0.07	2	◇	NPLTD

NOTES : Unless Otherwise Specified

1. MATERIAL : FR4 OR EQUIVALENT EPOXY, 2 OZ. COPPER CLAD THICKNESS .062 +/- .006 TOTAL OF 4 LAYERS.
2. FINISH : ALL PLATED HOLES .001 MIN. / .0015 MAX. COPPER PLATE ELECTRODEPOSITED TIN-LEAD COMPOSITION BEFORE REFLOW , SOLDER MASK OVER BARE COPPER (SMOBC).
3. SOLDER MASK : BOTH SIDES USING LPI OR EQUIVALENT.
4. SILKSCREEN : USING WHITE NON-CONDUCTIVE EPOXY INK.
5. UNUSED SMD COMPONENTS SHOULD BE FREE OF SOLDER.
6. SCORING:



7. PLEASE LOOK AT THE README FILE FOR THE OTHER REQUIREMENTS.

APPROVALS				LINEAR TECHNOLOGY	1630 McCarthy Blvd Milpitas, CA 95035 PH: (408)432-1900
	INIT	DATE			
DRAWN					
CHECK					
DESIGN	KIM T.	06-17-02			
ENGR	MARK M.	06-17-02			
			TITLE: FABRICATION DRAWING 1A, 500KHZ HIGH VOLTAGE BUCK CONVERTER		
SCALE = NONE			SIZE	DEMO	REV.
			A	DC423B-1 * LT1956EFE	A
DES- 0000			SHT 1 of 1		