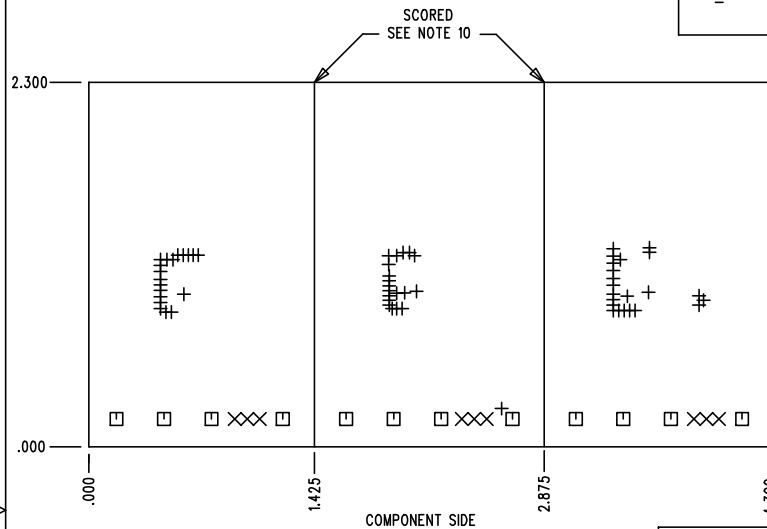


LTC CONFIDENTIAL – For Customer Use Only



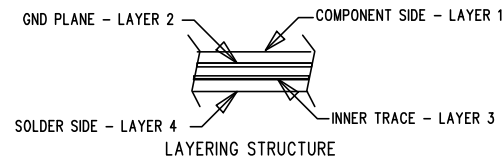
DWG NO DC397A

SH 1

REV 5

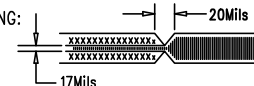
REVISION HISTORY

ECO	REV	DESCRIPTION	DATE	APPROVED
-	5	REVISED: CHG L2,3 & D2,3 MFR P/N; RMV C5;CHG C4; C6 TO C5. SILKSCREEN ON INVERTER CIRCUIT, VOUT WAS 250mA. DEMO BOARD RELEASE.	01/17/02	



NOTES: UNLESS OTHERWISE SPECIFIED

- ARTWORK P/N DC397A REV 5.
- FAB PER IPC-A-600
- MATERIAL: EPOXY FIBERGLASS, NEMA GRADE FR-4 FINISHED THICKNESS TO BE .062 +/- .005 INCH WITH 2 OZ. COPPER ON TWO OUTER LAYERS AND 1 OZ. COPPER ON TWO INTERNAL LAYERS. FLAMABILITY RATING: 94 V-0 MINIMUM .
- SIZE: CUT TO DIMENSIONS AND TOLERANCES SHOWN. 0.00 ARE PRIMARY DATUMS.
- DRILLING: DRILL HOLES PER SCHEDULE. PLATE THROUGH HOLES WITH COPPER, .001 INCH THICK MIN. ALL HOLE SIZES ARE SPECIFIED AFTER PLATING. HOLE LOCATION TOLERANCES ARE +/- .003 INCH IN RELATION TO CENTER
- FINISH: SMOBC USING LPI BOTH SIDES, GREEN PREFERRED. SILKSCREEN COMPONENT SIDE WITH WHITE NON-CONDUCTIVE INK.
- FILL UP ALL VIAS WITH SOLDER.
- DROP ALL UNUSED PADS ON INNER LAYERS.
- DO NOT ALTER ARTWORK e.g. TO ADD LOGO OR DATE CODE ON TOP SILKSCREEN.
- SCORING:

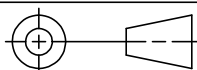


HOLE SIZE CHART

SYM	SIZE	QTY	PTH
+	.010+/- .003	61	YES
X	.030+/- .003	9	YES
□	.064+/- .003	12	YES
◇			
⊗			
⊠			

UNLESS OTHERWISE SPECIFIED
DIMENSIONS ARE IN INCHES
TOLERANCES ON ANGLE $\pm 1^\circ$
2 PLACE ± 0.1 3 PLACE ± 0.05
INTERPRET DIM AND TOL
PER ASME Y14.5M - 1994

THIRD ANGLE PROJECTION



DO NOT SCALE DRAWING

CONTRACT NO

APPROVALS

DATE

DRAWN L.SANTOS 05/07/01

CHECKED DAVE KIM 01/30/02

APPROVED

ENGINEER DAVE KIM 01/30/02



1630 McCarthy Blvd.
Milpitas, CA 95035
Phone: (408)432-1900
Fax: (408)434-0507

TITLE

FAB, LT1930A/31A, 2.2MHz, SOT-23 DC/DC CONVERTER PCB

SIZE A CAGE CODE DWG NO DC397A REV 5

SCALE 1/1 FILENAME: 397A_r5.PCB SHEET 1 OF 1