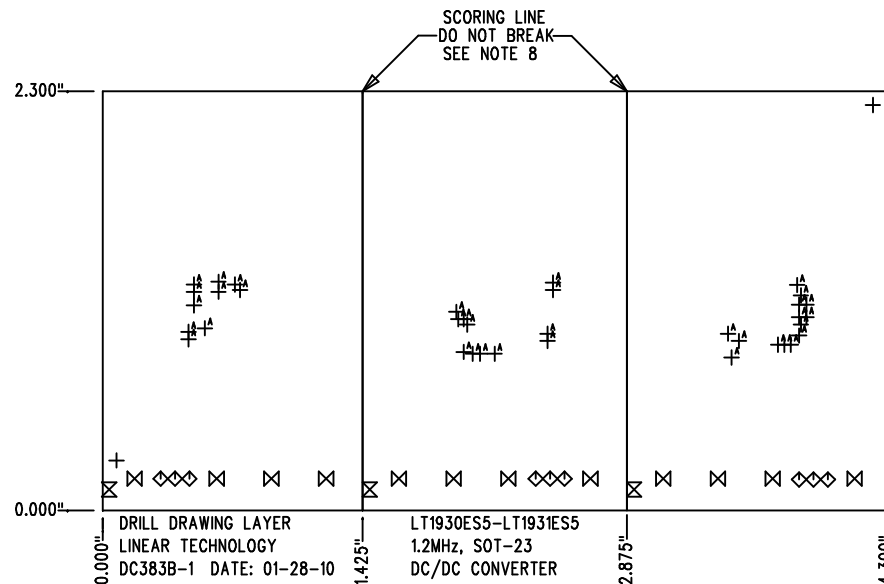
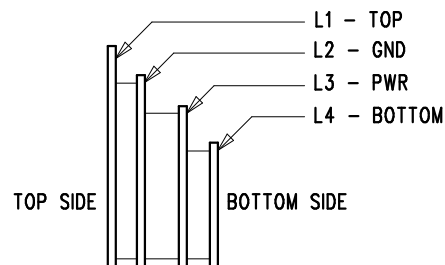


REVISION HISTORY				
ECO	REV	DESCRIPTION	APP. ENG.	DATE
1	1	PRODUCTION	JESUS R.	01-28-10



SHOWN FROM COMPONENT SIDE

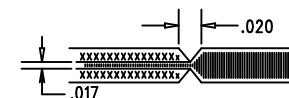
LAYER STRUCTURE



SIZE	QTY	SYM	PLATED	TOL
70	2	+	NO	+/-0.003"
35	9	◇	YES	+/-0.003"
12	3	⊗	YES	+/-0.003"
64	12	⊗	YES	+/-0.003"
10	36	+	YES	+/-0.003"

NOTES: UNLESS OTHERWISE SPECIFIED

- FAB PER IPC-A-600.
- MATERIAL: -EPOXY FIBERGLASS, NEMA GRADE FR-4
-FINISHED THICKNESS TO BE 0.062" +/- .005"
-TOTAL OF 4 LAYERS WITH 2 OZ. CU ON THE OUTER LAYERS
AND 1 OZ. CU ON THE INNER LAYERS.
-FLAMMABILITY RATING: 94 V-0 MINIMUM.
- SIZE: CUT TO DIMENSIONS AND TOLERANCES SHOWN.
0.00" ARE PRIMARY DATUMS.
- DRILLING: -DRILL HOLES PER SCHEDULE. PLATE THROUGH
HOLES WITH COPPER, 0.001" THICK MIN.
-ALL HOLE SIZES ARE SPECIFIED AFTER PLATING.
-HOLE LOCATION TOLERANCES ARE +/-0.003"
IN RELATION TO CENTER
- FINISH: -SMOBC USING LPI BOTH SIDES, COLOR GREEN.
-GOLD IMMERSION BOTH SIDES.
(LEAD FREE SOLDER CAN BE USED FOR PROTOTYPE)
-FOR SILKSCREEN: BOTH SIDES USE WHITE NON-CONDUCTIVE INK.
- DO NOT ALTER ARTWORK e.g. TO ADD LOGO OR DATE CODE.
PAD SIZE CAN BE MODIFIED TO MEET END FINISH.
- PCBS ARE TO BE RoHS COMPLIANT.
- SCORING FOR PANELIZED PCB:



UNLESS OTHERWISE SPECIFIED		APPROVALS				1630 MCCARTHY BLVD MILPITAS, CA 95035 PH: (408)432-1900 www.linear.com LTC CONFIDENTIAL- FOR CUSTOMER USE ONLY	
DIMENSIONS ARE IN INCHES TOLERANCES: 0.XX" = ±0.01" 0.XXX" = ±0.005" INTERPRET DIM AND TOL PER ASME Y14.5M-1994 THIRD ANGLE PROJECTION		PCB DES.	KT				
		APP ENG.	JESUS R.	TITLE: FABRICATION DRAWING			
				1.2MHz, SOT-23 DC/DC CONVERTER			
				SIZE	IC NO.	LT1930ES5-LT1931ES5	REV
				N/A		DEMO CIRCUIT 383B	1
		SCALE = NONE		FILENAME: DC383B-1.PCB		SHT 1 OF 1	