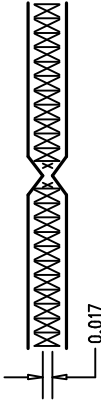


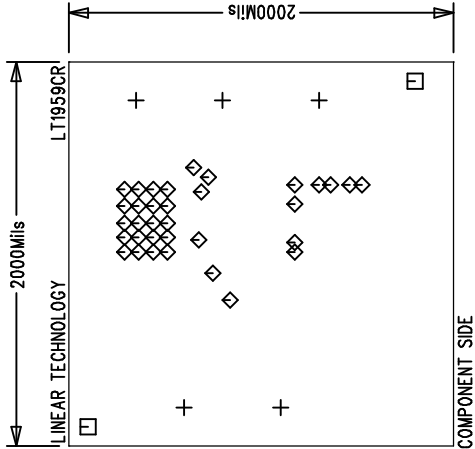
REVISIONS		
REV	DESCRIPTION	DATE

NOTES : Unless Otherwise Specified


1. MATERIAL : FR4 OR EQUIVALENT EPOXY, 2 OZ. COPPER CLAD  
THICKNESS .062 +/--.006 TOTAL OF 2 LAYERS
2. FINISH : ALL PLATED HOLES .001 MIN. / .0015 MAX. COPPER PLATE  
ELECTRODEPOSITED TIN-LEAD COMPOSITION  
BEFORE REFLOW , SOLDER MASK OVER BARE COPPER (SMOBC)
3. SOLDER MASK : BOTH SIDES USING GREEN SR1020 OR EQUIVALENT
4. SILKSCREEN : USING WHITE NON-CONDUCTIVE EPOXY INK
5. ALL DIMENSIONS ARE IN INCHES
6. SCORING:



SIZE	QTY	SYM	PLTD
95	5	+	PLTD
72	2	□	NPLTD
20	34	◇	PLTD



Fabrication Drawing

APPROVALS		<div>  <div> <b>LINEAR</b> TECHNOLOGY </div> </div> <div>           1630 McCarthy Blvd. Milpitas, CA 95035 PH: (408)432-1900 </div>	
DRAWN	INIT	DATE	
CHECK			
DESIGN			
ENGR			
TITLE: 4.5A, 500kHz Step-Down Switching Regulator		SIZE A	REV. A
SCALE = NONE		DES-230405	SHT 1 of 1