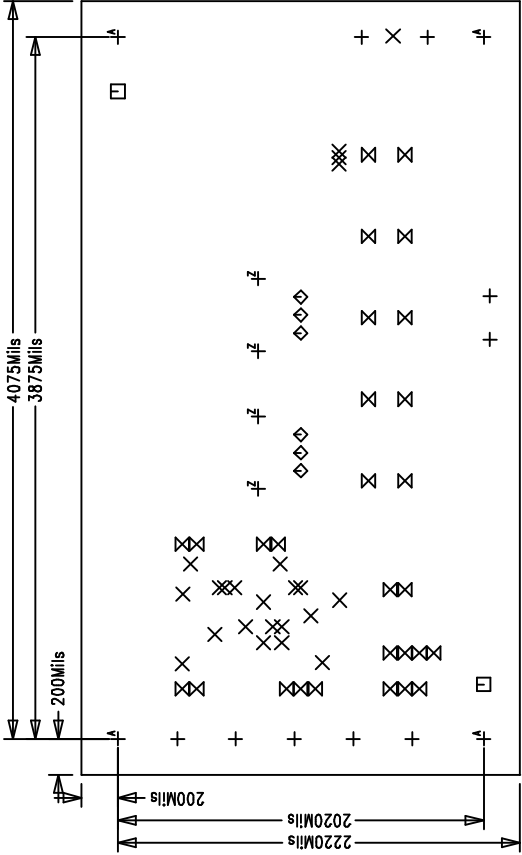
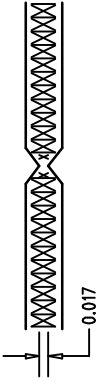


NOTES : Unless Otherwise Specified

- 1. MATERIAL : FR4 OR EQUIVALENT EPOXY, 2 OZ. COPPER CLAD
THICKNESS .062 +/- .006 TOTAL OF 4 LAYERS.
- 2. FINISH : ALL PLATED HOLES .001 MIN. / .0015 MAX. COPPER PLATE
ELECTRODEPOSITED TIN-LEAD COMPOSITION
BEFORE REFLOW , SOLDER MASK OVER BARE COPPER (SMOBC).
- 3. SOLDER MASK : BOTH SIDES USING LPI OR EQUIVALENT.
- 4. SILKSCREEN : USING WHITE NON-CONDUCTIVE EPOXY INK.
- 5. UNUSED SMD COMPONENTS SHOULD BE FREE OF SOLDER.
- 6. FILL UP ALL VIAS WITH SOLDER.
- 7. SCORING:



SIZE	QTY	SYM	PLTD
94	9	+	PLTD
15	23	X	PLTD
70	2	□	NPLTD
40	6	◇	PLTD
35	28	⊗	PLTD
120	4	A	PLTD
86	4	Z	PLTD

DRILL DRAWING LAYER
TOP LAYER
LINEAR TECHNOLOGY - DC337A
BUCK REGULATOR
LTC1775

SHOWN FROM COMPONENT SIDE

REVISIONS

REV	DESCRIPTION	APPR	DATE
A	PROTOTYPE RELEASE		

APPROVALS

DRAWN	CHECK	DESIGN	ENGR	INIT	DATE

1630 McCarthy Blvd.
Milpitas, CA 95035
PH: (408)432-1900

LINEAR TECHNOLOGY

TITLE: Fabrication Drawing
BUCK REGULATOR

SIZE	DEMO	REV.
A	DC337A-LTC1775	A

SCALE = NONE

DES-230389

SHT 1 of 1