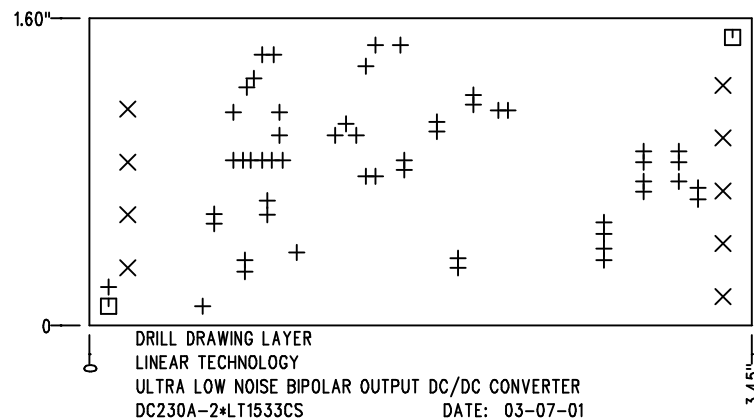


REVISIONS			
REV	DESCRIPTION	APPR	DATE
A	PROTOTYPE RELEASE		

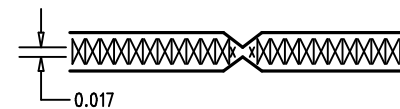


SHOWN FROM COMPONENT SIDE


SIZE	QTY	SYM	PLTD
20	53	+	PLTD
94	9	X	PLTD
70	2	□	NPLTD

NOTES : Unless Otherwise Specified

1. MATERIAL : FR4 OR EQUIVALENT EPOXY, 2 OZ. COPPER CLAD
THICKNESS .062 +/- .006 TOTAL OF 2 LAYERS.
2. FINISH : ALL PLATED HOLES .001 MIN. / .0015 MAX. COPPER PLATE
ELECTRODEPOSITED TIN-LEAD COMPOSITION
BEFORE REFLOW , SOLDER MASK OVER BARE COPPER (SMOBC).
3. SOLDER MASK : BOTH SIDES USING LPI OR EQUIVALENT.
4. SILKSCREEN : USING WHITE NON-CONDUCTIVE EPOXY INK.
5. UNUSED SMD COMPONENTS SHOULD BE FREE OF SOLDER.
6. FILL UP ALL VIAS WITH SOLDER.
7. SCORING:



8. PLEASE LOOK AT THE READ ME FILE FOR THE OTHER REQUIREMENTS.

APPROVALS			 LINEAR TECHNOLOGY 1630 McCarthy Blvd. Milpitas, CA 95035 PH: (408)432-1900
DRAWN	INIT	DATE	
CHECK			
DESIGN	KIM T.	03-07-01	TITLE: Fabrication Drawing ULTRA LOW NOISE BIPOLAR OUTPUT DC/DC CONVERTER
ENGR	DAVID C.	03-07-01	
			SIZE A DEMO DC230A-2*LT1533CS REV. A
SCALE = NONE			DES- 0000 SHT 1 of 1