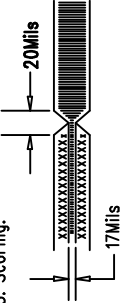


REVISIONS			
REV		APPR	DATE

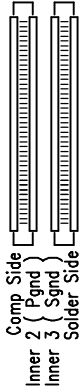
NOTES: Unless Otherwise Specified

- 1. MATERIAL: 2 Layers, 0.062" THK. FR-4 Glass Epoxy 2 OZ. Copper Clad.
- 2. All Holes Shall be Plated Thru.
- 3. Plate Thru Holes With Copper .0014 Min. Thickness.
** All Via's should be filled. (+0/- .08)
All Hole Sizes in Hole Table Are After Plating.
- 4. SILKSCREEN: With White Epoxy Non-Conductive Ink.
- 5 SOLDER MASK: SMOBC, LPI, Green.
- 6. DO NOT MAKES CHANGES ON SILKSCREEN, SUCH AS COMPANY LOGO, QC STAMPS.
- 7. DO NOT PLATE TOOLING(3PLCS) AND SCORING(26PLCS) HOLES.
(Reference Drawing Dwg No. DC205A)

8. Scoring:




9. Layer Construction.

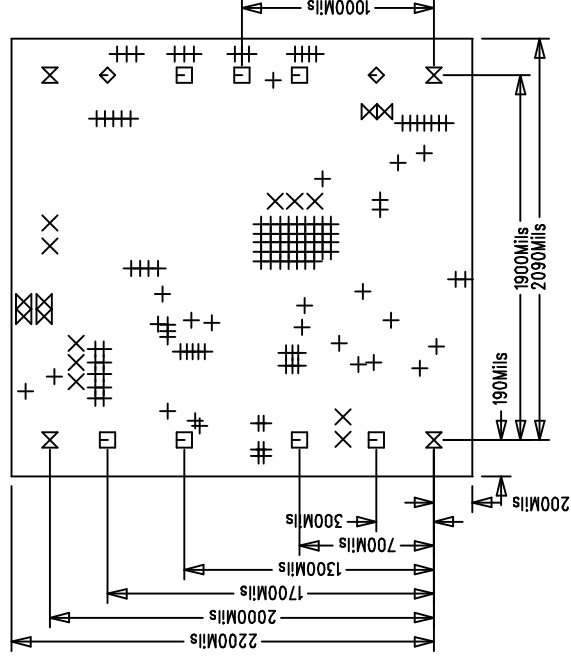


QTY	SYM	PLTD
128	+	PLTD
10	X	PLTD
7	□	PLTD
2	◇	PLTD
6	⊗	PLTD
4	⊠	PLTD

Fabrication Drawing

APPROVALS					1630 McCarthy Blvd. Milpitas, CA 95035 PH: (408)432-1900	
	DRAWN	INIT	DATE			
	CHECK					
	DESIGN	Rmb		TITLE: 35W Isolated Forward Converter		
	ENGR	Bob S.		" Module Killer "		
				SIZE	Demob Board	REV. A
				NONE		
SCALE = NONE			DES-0260		SHT 1 of 1	

Demo Board 227a
35W Isolated Forward
Converter



SIZE	10	41	43	94	34	125