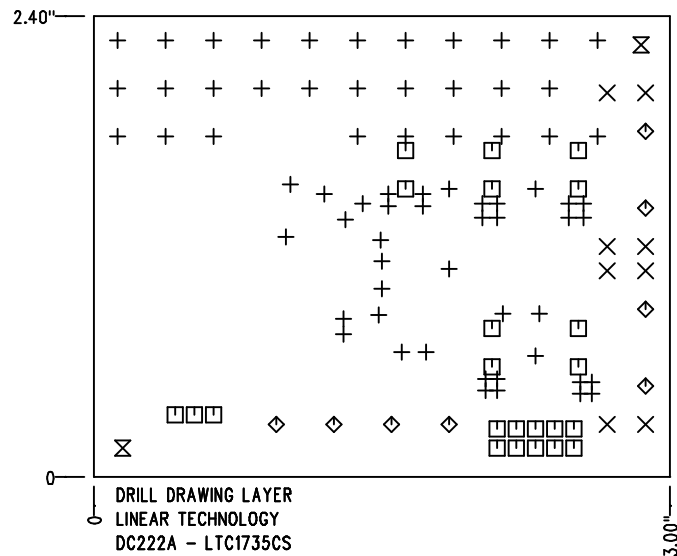


REVISIONS			
REV	DESCRIPTION	APPR	DATE
A	PROTOTYPE RELEASE		



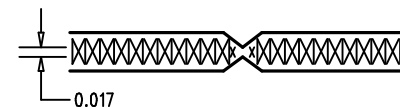
DRILL DRAWING LAYER  
 LINEAR TECHNOLOGY  
 DC222A - LTC1735CS  
 10A SYNCHRONOUS BUCK REGULATOR  
 DATE: 01-26-99

SHOWN FROM COMPONENT SIDE


SIZE	QTY	SYM	PLTD
0.02	69	+	PLTD
0.04	8	X	PLTD
0.035	23	□	PLTD
0.094	8	◇	PLTD
0.07	2	⊗	NPLTD

#### NOTES : Unless Otherwise Specified

1. MATERIAL : FR4 OR EQUIVALENT EPOXY, 2 OZ. COPPER CLAD  
THICKNESS .062 +/- .006 TOTAL OF 4 LAYERS.
2. FINISH : ALL PLATED HOLES .001 MIN. / .0015 MAX. COPPER PLATE  
ELECTRODEPOSITED TIN-LEAD COMPOSITION  
BEFORE REFLOW , SOLDER MASK OVER BARE COPPER (SMOBC).
3. SOLDER MASK : BOTH SIDES USING LPI OR EQUIVALENT.
4. SILKSCREEN : USING WHITE NON-CONDUCTIVE EPOXY INK.
5. UNUSED SMD COMPONENTS SHOULD BE FREE OF SOLDER.
6. FILL UP ALL VIAS WITH SOLDER.
7. SCORING:



8. PLEASE LOOK AT THE README FILE FOR THE OTHER REQUIREMENTS.

APPROVALS			 <b>LINEAR TECHNOLOGY</b>	1630 McCarthy Blvd. Milpitas, CA 95035 PH: (408)432-1900	
	INIT	DATE			
DRAWN					
CHECK					
DESIGN	KIM T.	01-26-99			
ENGR	JOHN S.	01-26-99			
			TITLE: Fabrication Drawing <b>10A SYNCHRONOUS BUCK REGULATOR</b>		
SCALE = NONE			SIZE	DEMO	REV.
			A	DC222A-LTC1735CS	A
DES- 0000			SHT 1 of 1		