

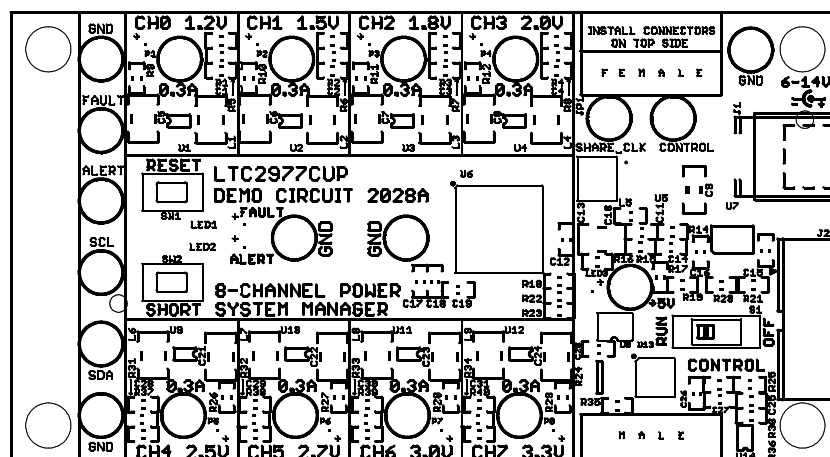
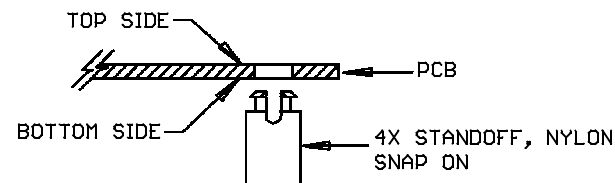
REVISION HISTORY

ECO	REV	DESCRIPTION	APPROVED	DATE
-	1	PRODUCTION	MIKE P.	01/15/2013

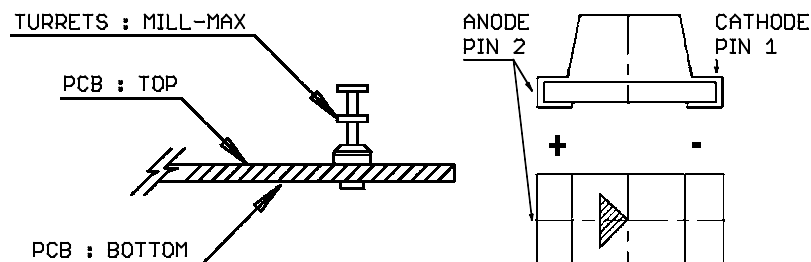
NOTES: UNLESS OTHERWISE SPECIFIED

1. WORKMANSHIP SHALL BE IN ACCORDANCE WITH IPC-A-610.
2. PARTS TO OMIT WILL BE SPECIFIED ON THE BILL OF MATERIALS. MASK THE SOLDER STENCIL WHERE SMT PARTS ARE OMITTED.
3. DEPANELIZE BOARDS AFTER ASSEMBLY AND ROUTE-OUT THE BREAKOUT TABS ON 4 SIDES OF THE BOARD EDGE.
4. ASSY PROCESS SHALL INCLUDE: REFLOW SOLDER TOP SIDE SMD.
5. DO NOT APPLY ANY KIND OF ASSEMBLY STAMP OR QA STAMP ON ANY BOARD.

6. INSTALL 4 STANDOFFS AT 4 CORNERS FROM THE BOTTOM SIDE.

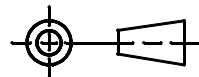


7. INSTALL TURRETS and LEDS AS SHOWN BELOW:



UNLESS OTHERWISE SPECIFIED
DIMENSIONS ARE IN INCHES
TOLERANCES ON ANGLE +/- 1°
0.1XX" = +/- 0.01"
0.XXX" = +/- 0.005"
INTERPRET DIM AND TOL
PER ASME Y14.5M-1994

THIRD ANGLE PROJECTION



DO NOT SCALE DRAWING

APPROVALS

	NAME	DATE
PCB DES.	R.S.	01-15-13
ENG	MIKE P.	01-15-13



1630 MCCARTHY BLVD.
MILPITAS, CA 95033
PH: (408) 432-1800
LTC CONFIDENTIAL
FOR CUSTOMER USE ONLY

TITLE: TOP ASSEMBLY DRAWING
LTC2977CUP 8-CHANNEL
POWER SYSTEM MANAGER

SIZE	IC NO.	REV
N/A	LTC2977 DEMO CIRCUIT 2028A	1

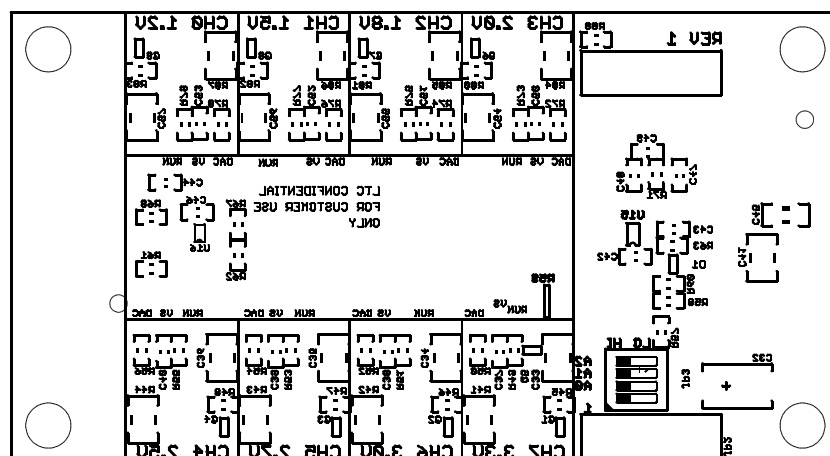
FILENAME: DC2028A_Rev1

SHEET 1 OF 13

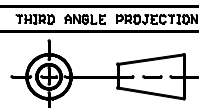
SCALE: NONE

REVISION HISTORY

ECO	REV	DESCRIPTION	APPROVED	DATE
-	1	PRODUCTION	MIKE P.	01/15/2013



UNLESS OTHERWISE SPECIFIED
DIMENSIONS ARE IN INCHES
TOLERANCES ON ANGLE $\pm 1^\circ$
0.XXX" = $\pm 0.01"$
0.XXX" = $\pm 0.005"$
INTERPRET DIM AND TOL
PER ASME Y14.5M-1994



DO NOT SCALE DRAWING

APPROVALS

	NAME	DATE
PCB DES.	R.S.	01-15-13
ENG	MIKE P.	01-15-13



1630 MCCARTHY BLVD.
MILPITAS, CA 95033
PH: (408) 432-1500
LTC CONFIDENTIAL
FOR CUSTOMER USE ONLY

TITLE: BOTTOM ASSEMBLY DRAWING
LTC2977CUP 8-CHANNEL
POWER SYSTEM MANAGER

SIZE N/A	IC NO. LTC2977 DEMO CIRCUIT 2028A	REV 1
-------------	--------------------------------------	----------

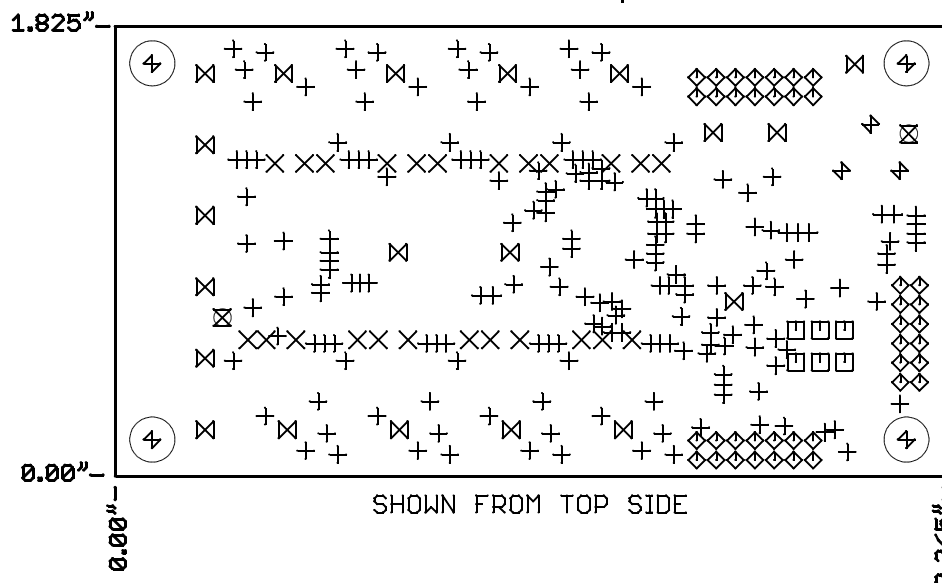
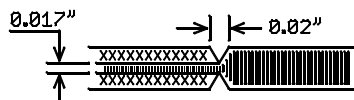
FILENAME: DC2028A_Rev1

SHEET 2 OF 13

NOTES: UNLESS OTHERWISE SPECIFIED

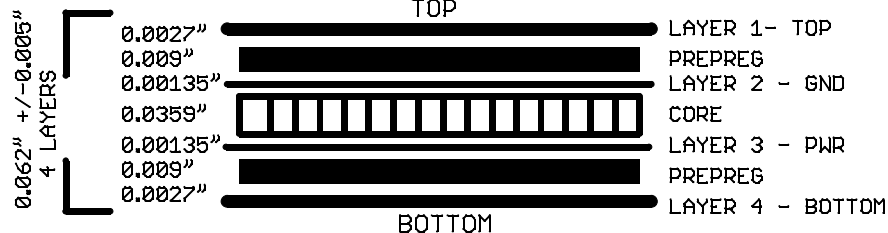
1. FAB PER IPC-A-600.
2. MATERIAL: EPOXY FIBERGLASS, NEMA GRADE FR-4
FINISHED THICKNESS TO BE 0.062" +/-0.005"
4-LAYER BOARD, 2 OZ. CU ON OUTER LAYERS,
1 OZ. CU ON INNER LAYERS,
FLAMMABILITY RATING: 94 V-2 MINIMUM.
3. SIZE: CUT TO DIMENSIONS AND TOLERANCES SHOWN.
0.00" ARE PRIMARY DATUMS.
4. FINISH: SMOBC USING LPI BOTH SIDES, COLOR BLACK.
ENIG FINISH. LEAD FREE SOLDER CAN BE USED
FOR PROTOTYPE BOARDS.
HIGH DEFINITION WHITE SILKSCREEN.


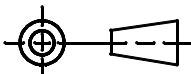
5. DRILL: PLATE THRU ALL HOLES WITH COPPER, 0.001"
THICK MIN. ALL HOLES SHALL BE DRILLED
+/-0.003" WITH RESPECT TO CTR. OF DRILLED
PAD. ALL HOLES FINISHED SIZE AFTER PLATING.
6. DROP ALL UNUSED PADS ON INNER LAYERS.
7. DO NOT ALTER ARTWORK e.g. TO ADD LOGO OR DATE CODE.
PAD SIZE CAN BE MODIFIED TO MEET END FINISH.
8. PCBs ARE TO BE RoHS COMPLIANT.
9. SCORING FOR PANELIZED PCB:



DRILL TABLE					
Sym	Nº	Mils	MM	Qty	Plated
+	1	10	0.25	187	YES
X	2	15	0.38	24	YES
□	3	35	0.90	6	YES
◇	4	36	0.91	40	YES
⊗	5	71	1.80	2	NOT
⊗	6	96	2.44	20	YES
⊗	7	118	3.00	3	YES
⊗	8	183	4.65	4	NOT

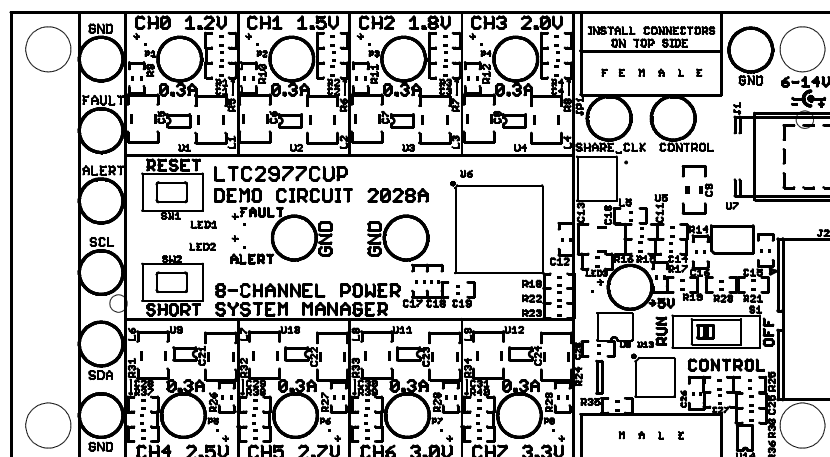
LAYER STRUCTURE



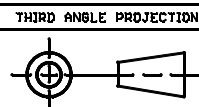
UNLESS OTHERWISE SPECIFIED DIMENSIONS ARE IN INCHES TOLERANCES ON ANGLE +/- 1° 0.XXX" = +/- 0.01" 0.XXX" = +/- 0.005" INTERPRET DIM AND TOL PER ASME Y14.5M-1994	APPROVALS			 <div>1630 MCCARTHY BLVD. MILPITAS, CA 95033 PH: (408) 432-1500 LTC CONFIDENTIAL FOR CUSTOMER USE ONLY</div>		
		NAME	DATE			
	PCB DES.	R.S.	01-15-13			
	ENG	MIKE P.	01-15-13			
THIRD ANGLE PROJECTION					TITLE: FABRICATION DRAWING LTC2977CUP 8-CHANNEL POWER SYSTEM MANAGER	
						
DO NOT SCALE DRAWING	SCALE: NONE			SIZE N/A	IC NO. LTC2977 DEMO CIRCUIT 2028A	REV 1
				FILENAME: DC2028A_Rev1		SHEET 3 OF 13

REVISION HISTORY

ECO	REV	DESCRIPTION	APPROVED	DATE
-	1	PRODUCTION	MIKE P.	01/15/2013



UNLESS OTHERWISE SPECIFIED
DIMENSIONS ARE IN INCHES
TOLERANCES ON ANGLE $\pm 1^\circ$
0.XXX" = $\pm 0.01"$
0.XXX" = $\pm 0.005"$
INTERPRET DIM AND TOL
PER ASME Y14.5M-1994



DO NOT SCALE DRAWING

APPROVALS

	NAME	DATE
PCB DES.	R.S.	01-15-13
ENG	MIKE P.	01-15-13



1630 MCCARTHY BLVD.
MILPITAS, CA 95033
PH: (408) 432-1500
LTC CONFIDENTIAL
FOR CUSTOMER USE ONLY

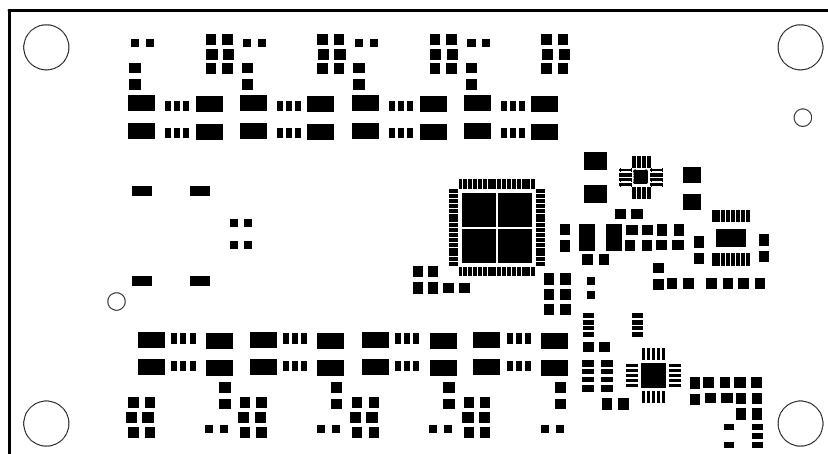
TITLE: TOP SILKSCREEN
LTC2977CUP 8-CHANNEL
POWER SYSTEM MANAGER


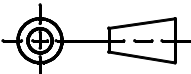
SIZE N/A	IC NO. LTC2977 DEMO CIRCUIT 2028A	REV 1
-------------	--------------------------------------	----------

FILENAME: DC2028A_Rev1 SHEET 4 OF 13

REVISION HISTORY

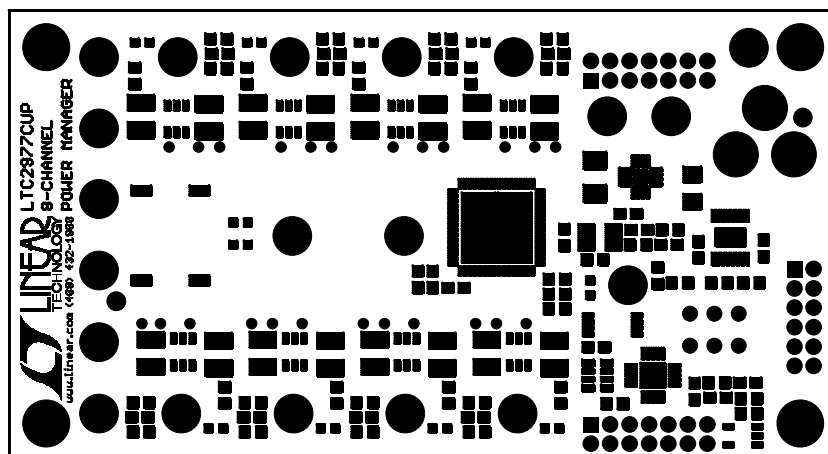
ECO	REV	DESCRIPTION	APPROVED	DATE
-	1	PRODUCTION	MIKE P.	01/15/2013



<p>UNLESS OTHERWISE SPECIFIED DIMENSIONS ARE IN INCHES TOLERANCES ON ANGLE +/- 1° 0.XX" = +/- 0.01" 0.XXX" = +/- 0.005" INTERPRET DIM AND TOL PER ASME Y14.5M-1994</p>	APPROVALS		 <p>1630 MCCARTHY BLVD. MILPITAS, CA 95033 PH: (408) 432-1500 LTC CONFIDENTIAL FOR CUSTOMER USE ONLY</p>
	NAME	DATE	
	PCB DES. R.S.	01-15-13	
	ENG MIKE P.	01-15-13	
THIRD ANGLE PROJECTION			<p>TITLE: TOP PASTE LTC2977CUP 8-CHANNEL POWER SYSTEM MANAGER</p>
			
DO NOT SCALE DRAWING	SCALE: NONE	FILENAME: DC2028A_Rev1	<p>SIZE N/A</p> <p>IC NO. LTC2977</p> <p>DEMO CIRCUIT 2028A</p> <p>REV 1</p>

REVISION HISTORY

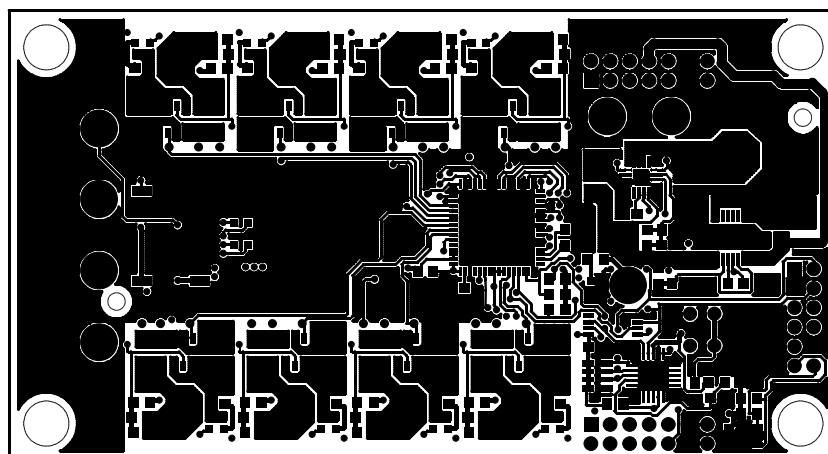
ECO	REV	DESCRIPTION	APPROVED	DATE
-	1	PRODUCTION	MIKE P.	01/15/2013



<p>UNLESS OTHERWISE SPECIFIED DIMENSIONS ARE IN INCHES TOLERANCES ON ANGLE +/- 1° 0.XXX" = +/- 0.01" 0.XXX" = +/- 0.005" INTERPRET DIM AND TOL PER ASME Y14.5M-1994</p>	<p>APPROVALS</p>			<p>LINEAR TECHNOLOGY</p> <p>1630 MCCARTHY BLVD. MILPITAS, CA 95033 PH: (408) 432-1500 LTC CONFIDENTIAL FOR CUSTOMER USE ONLY</p>		
	PCB DES.	R.S.	01-15-13			
	ENG	MIKE P.	01-15-13			
	<p>THIRD ANGLE PROJECTION</p>					
	<p>TITLE: TOP SOLDERMASK LTC2977CUP 8-CHANNEL POWER SYSTEM MANAGER</p>			<p>SIZE N/A</p>	<p>IC NO. LTC2977 DEMO CIRCUIT 2028A</p>	<p>REV 1</p>
<p>DO NOT SCALE DRAWING</p>			<p>SCALE: NONE</p>			
<p>FILENAME: DC2028A_Rev1</p>			<p>SHEET 6 OF 13</p>			

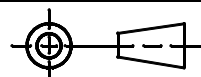
REVISION HISTORY

ECO	REV	DESCRIPTION	APPROVED	DATE
-	1	PRODUCTION	MIKE P.	01/15/2013



UNLESS OTHERWISE SPECIFIED
DIMENSIONS ARE IN INCHES
TOLERANCES ON ANGLE +/- 1°
0.XXX" = +/- 0.01"
0.XXX" = +/- 0.005"
INTERPRET DIM AND TOL
PER ASME Y14.5M-1994

THIRD ANGLE PROJECTION



DO NOT SCALE DRAWING

APPROVALS

	NAME	DATE
PCB DES.	R.S.	01-15-13
ENG	MIKE P.	01-15-13



1630 MCCARTHY BLVD.
MILPITAS, CA 95033
PH: (408) 432-1500
LTC CONFIDENTIAL
FOR CUSTOMER USE ONLY

TITLE: 1 - TOP COPPER (SIGNAL)
LTC2977CUP 8-CHANNEL
POWER SYSTEM MANAGER

SIZE N/A	IC NO. LTC2977 DEMO CIRCUIT 2028A	REV 1
-------------	--------------------------------------	----------

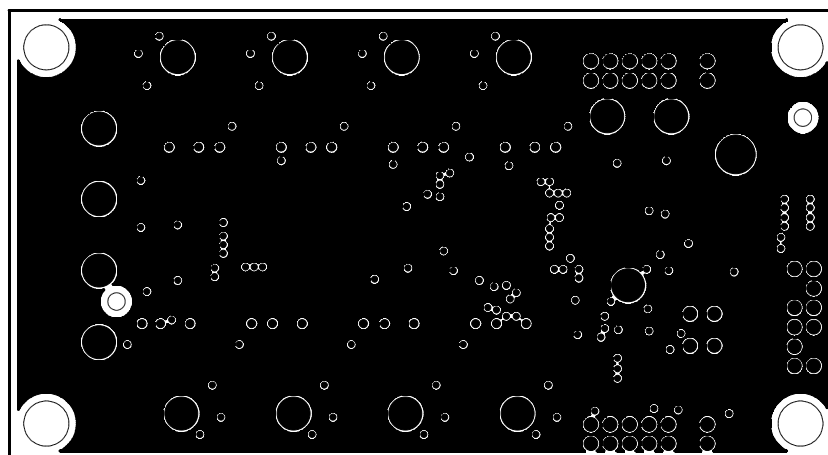
FILENAME: DC2028A_Rev1

SHEET 7 OF 13

SCALE: NONE

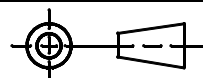
REVISION HISTORY

ECO	REV	DESCRIPTION	APPROVED	DATE
-	1	PRODUCTION	MIKE P.	01/15/2013



UNLESS OTHERWISE SPECIFIED
DIMENSIONS ARE IN INCHES
TOLERANCES ON ANGLE +/- 1°
0.XXX" = +/- 0.01"
0.XXX" = +/- 0.005"
INTERPRET DIM AND TOL
PER ASME Y14.5M-1994

THIRD ANGLE PROJECTION



DO NOT SCALE DRAWING

APPROVALS

	NAME	DATE
PCB DES.	R.S.	01-15-13
ENG	MIKE P.	01-15-13



1630 MCCARTHY BLVD.
MILPITAS, CA 95033
PH: (408) 432-1500
LTC CONFIDENTIAL
FOR CUSTOMER USE ONLY

TITLE: 2 - INNER COPPER (GND PLANE)
LTC2977CUP 8-CHANNEL
POWER SYSTEM MANAGER

SIZE N/A	IC NO. LTC2977 DEMO CIRCUIT 2028A	REV 1
-------------	--------------------------------------	----------

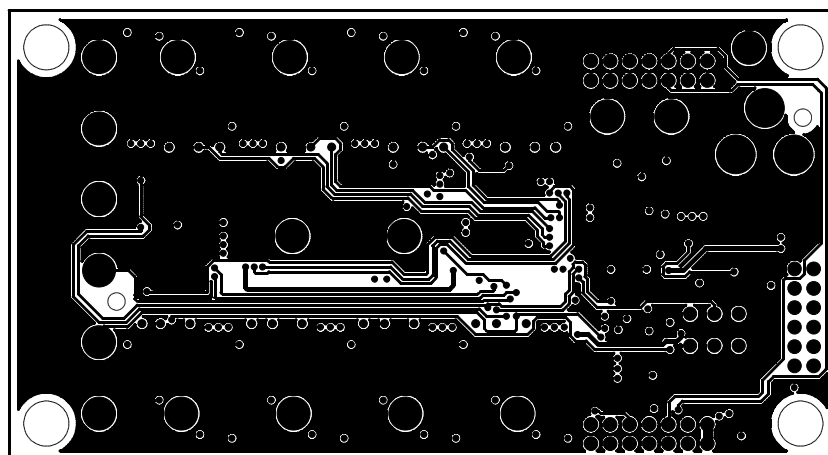
FILENAME: DC2028A_Rev1

SHEET 8 OF 13

SCALE: NONE

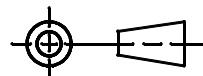
REVISION HISTORY

ECO	REV	DESCRIPTION	APPROVED	DATE
-	1	PRODUCTION	MIKE P.	01/15/2013



UNLESS OTHERWISE SPECIFIED
DIMENSIONS ARE IN INCHES
TOLERANCES ON ANGLE +/- 1°
0.XX" = +/- 0.01"
0.XXX" = +/- 0.005"
INTERPRET DIM AND TOL
PER ASME Y14.5M-1994

THIRD ANGLE PROJECTION



DO NOT SCALE DRAWING

APPROVALS

	NAME	DATE
PCB DES.	R.S.	01-15-13
ENG	MIKE P.	01-15-13



1630 MCCARTHY BLVD.
MILPITAS, CA 95033
PH: (408) 432-1500
LTC CONFIDENTIAL
FOR CUSTOMER USE ONLY

TITLE: 3 - INNER COPPER (POWER)
LTC2977CUP 8-CHANNEL
POWER SYSTEM MANAGER

SIZE N/A	IC NO. LTC2977 DEMO CIRCUIT 2028A	REV 1
-------------	--------------------------------------	----------

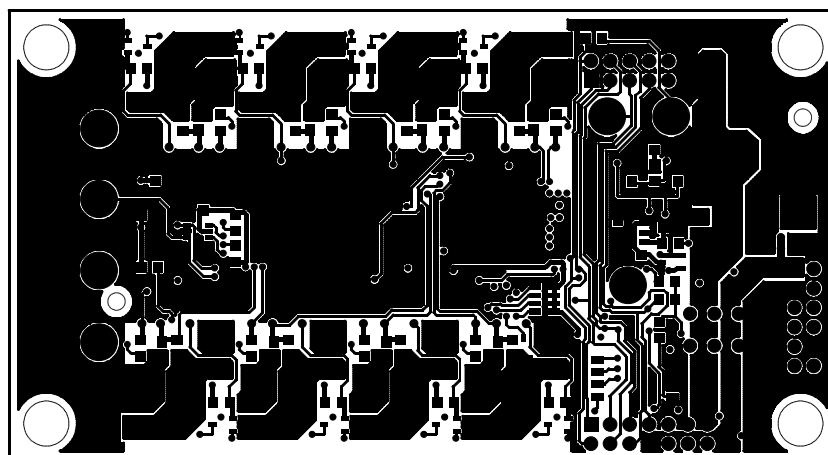
FILENAME: DC2028A_Rev1

SHEET 9 OF 13

SCALE: NONE

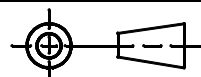
REVISION HISTORY

ECO	REV	DESCRIPTION	APPROVED	DATE
-	1	PRODUCTION	MIKE P.	01/15/2013



UNLESS OTHERWISE SPECIFIED
DIMENSIONS ARE IN INCHES
TOLERANCES ON ANGLE +/- 1°
0.XX" = +/- 0.01"
0.XXX" = +/- 0.005"
INTERPRET DIM AND TOL
PER ASME Y14.5M-1994

THIRD ANGLE PROJECTION



DO NOT SCALE DRAWING

APPROVALS

	NAME	DATE
PCB DES.	R.S.	01-15-13
ENG	MIKE P.	01-15-13



1630 MCCARTHY BLVD.
MILPITAS, CA 95033
PH: (408) 432-1500
LTC CONFIDENTIAL
FOR CUSTOMER USE ONLY

TITLE: 4 - BOTTOM COPPER (SIGNAL)
LTC2977CUP 8-CHANNEL
POWER SYSTEM MANAGER

SIZE N/A	IC NO. LTC2977 DEMO CIRCUIT 2028A	REV 1
-------------	--------------------------------------	----------

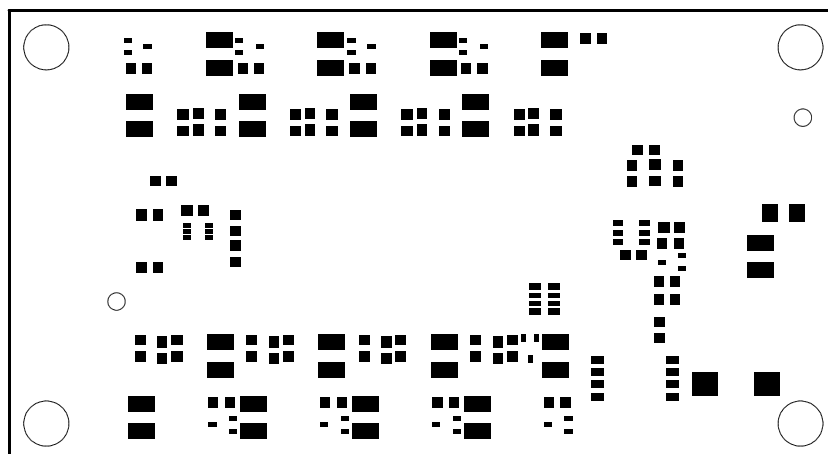
FILENAME: DC2028A_Rev1

SHEET 10 OF 13

SCALE: NONE

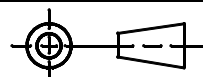
REVISION HISTORY

ECO	REV	DESCRIPTION	APPROVED	DATE
-	1	PRODUCTION	MIKE P.	01/15/2013



UNLESS OTHERWISE SPECIFIED
DIMENSIONS ARE IN INCHES
TOLERANCES ON ANGLE $\pm 1^\circ$
0.XX" = ± 0.01 "
0.XXX" = ± 0.005 "
INTERPRET DIM AND TOL
PER ASME Y14.5M-1994

THIRD ANGLE PROJECTION



DO NOT SCALE DRAWING

APPROVALS

	NAME	DATE
PCB DES.	R.S.	01-15-13
ENG	MIKE P.	01-15-13



1630 MCCARTHY BLVD.
MILPITAS, CA 95033
PH: (408) 432-1500
LTC CONFIDENTIAL
FOR CUSTOMER USE ONLY

TITLE: BOTTOM PASTE
LTC2977CUP 8-CHANNEL
POWER SYSTEM MANAGER

SIZE N/A	IC NO. LTC2977 DEMO CIRCUIT 2028A	REV 1
-------------	--------------------------------------	----------

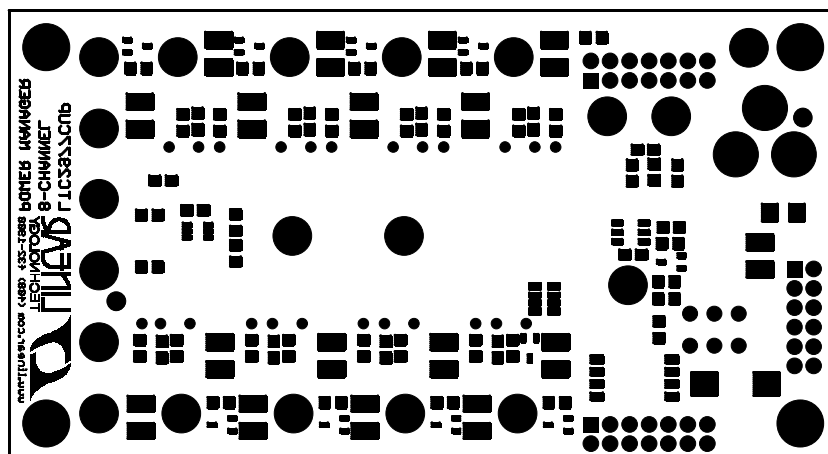
FILENAME: DC2028A_Rev1


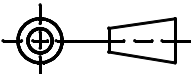
SHEET 11 OF 13

SCALE: NONE

REVISION HISTORY

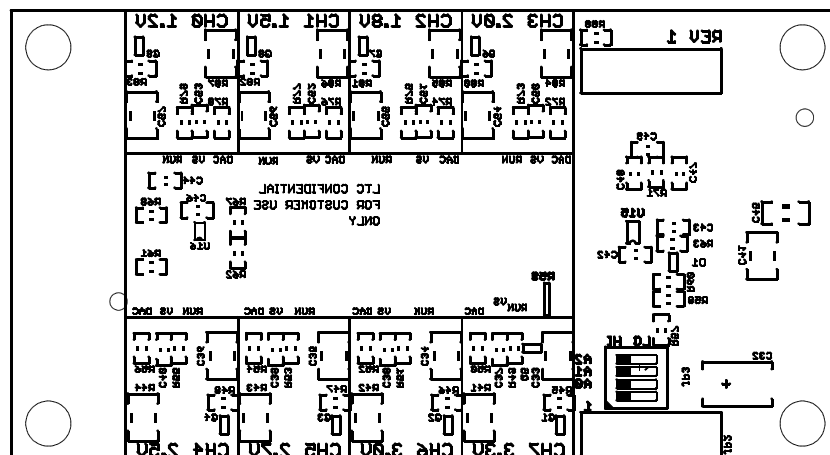
ECO	REV	DESCRIPTION	APPROVED	DATE
-	1	PRODUCTION	MIKE P.	01/15/2013



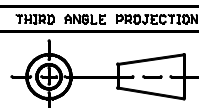
<p>UNLESS OTHERWISE SPECIFIED DIMENSIONS ARE IN INCHES TOLERANCES ON ANGLE $\pm 1^\circ$ $0.XX^\circ = \pm 0.01^\circ$ $0.XXX^\circ = \pm 0.005^\circ$ INTERPRET DIM AND TOL PER ASME Y14.5M-1994</p>	APPROVALS			 <p>1630 MCCARTHY BLVD. MILPITAS, CA 95033 PH: (408) 432-1500 LTC CONFIDENTIAL FOR CUSTOMER USE ONLY</p>
	PCB DES.	R.S.	01-15-13	
	ENG	MIKE P.	01-15-13	
	THIRD ANGLE PROJECTION			
				<p>TITLE: BOTTOM SOLDERMASK LTC2977CUP 8-CHANNEL POWER SYSTEM MANAGER</p>
DO NOT SCALE DRAWING	SCALE: NONE			<p>SIZE N/A</p> <p>IC NO. LTC2977 DEMO CIRCUIT 2028A</p> <p>REV 1</p>
FILENAME: DC2028A_Rev1			SHEET 12 OF 13	

REVISION HISTORY

ECO	REV	DESCRIPTION	APPROVED	DATE
-	1	PRODUCTION	MIKE P.	01/15/2013



UNLESS OTHERWISE SPECIFIED
DIMENSIONS ARE IN INCHES
TOLERANCES ON ANGLE +/- 1°
0.XXX" = +/- 0.01"
0.XXX" = +/- 0.005"
INTERPRET DIM AND TOL
PER ASME Y14.5M-1994



DO NOT SCALE DRAWING

APPROVALS

	NAME	DATE
PCB DES.	R.S.	01-15-13
ENR	MIKE P.	01-15-13



1630 MCCARTHY BLVD.
MILPITAS, CA 95033
PH: (408) 432-1500
LTC CONFIDENTIAL
FOR CUSTOMER USE ONLY

TITLE: BOTTOM SILKSCREEN
LTC2977CUP 8-CHANNEL
POWER SYSTEM MANAGER

SIZE N/A	IC NO. LTC2977 DEMO CIRCUIT 2028A	REV 1
-------------	--------------------------------------	----------

FILENAME: DC2028A_Rev1

SHEET 13 OF 13