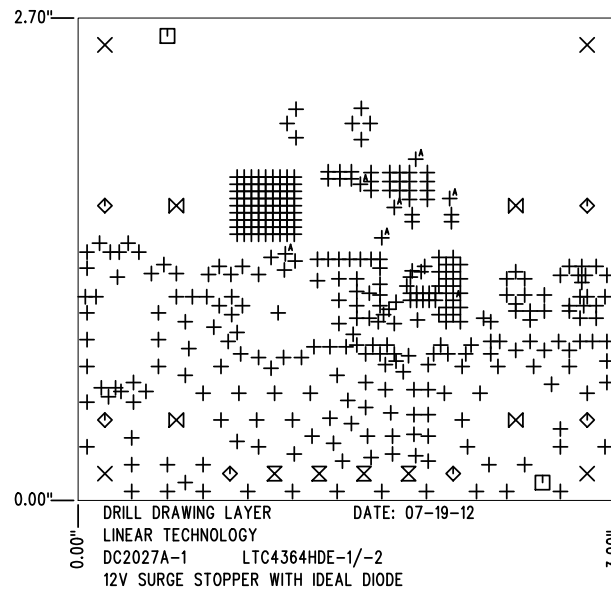


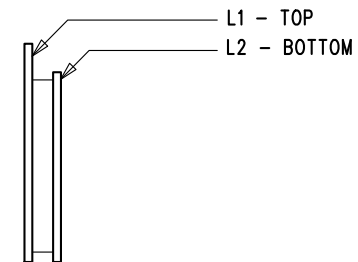
REVISION HISTORY				
ECO	REV	DESCRIPTION	APP. ENG.	DATE
-	1	1ST PROTOTYPE	MITCHELL L.	07-19-12

SHOWN FROM TOP SIDE



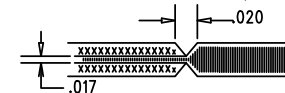
SIZE	QTY	SYM	PLATED	TOL
0.012	358	+	YES	+/-0.003"
0.187	4	X	NO	+/-0.003"
0.07	2	□	NO	+/-0.003"
0.094	6	◇	YES	+/-0.003"
0.064	4	⊗	YES	+/-0.003"
0.215	4	⊗	YES	+/-0.003"
0.025	7	+ <sup>A</sup>	YES	+/-0.003"


## LAYER STRUCTURE



## NOTES: UNLESS OTHERWISE SPECIFIED

- FAB PER IPC-A-600.
- MATERIAL: -LEAD FREE ASSEMBLY COMPLIANT, ISOLA FR-370HR  
-FINISHED THICKNESS TO BE 0.062" +/- .005"  
-TOTAL OF 2 LAYERS WITH 2 OZ. CU ON EACH.  
-FLAMMABILITY RATING: 94 V-0 MINIMUM.
- SIZE: CUT TO DIMENSIONS AND TOLERANCES SHOWN.  
0.00" ARE PRIMARY DATUMS.
- DRILLING: -DRILL HOLES PER SCHEDULE. PLATE THROUGH HOLES WITH COPPER, 0.001" THICK MIN.  
-ALL HOLE SIZES ARE SPECIFIED AFTER PLATING.  
-HOLE LOCATION TOLERANCES ARE +/-0.003" IN RELATION TO CENTER
- FINISH: -SMOBC USING LPI BOTH SIDES, COLOR GREEN.  
-GOLD IMMERSION BOTH SIDES.  
-FOR SILKSCREENS: USE WHITE NON-CONDUCTIVE INK.
- DO NOT ALTER ARTWORK e.g. TO ADD LOGO OR DATE CODE.  
PAD SIZE CAN BE MODIFIED TO MEET END FINISH.
- PCBS ARE TO BE RoHS COMPLIANT.
- SCORING FOR PANELIZED PCB (PRODUCTION FAB ONLY):



<b>UNLESS OTHERWISE SPECIFIED</b> DIMENSIONS ARE IN INCHES TOLERANCES: 0.XX" = ±0.01" 0.XXX" = ±0.005" INTERPRET DIM AND TOL PER ASME Y14.5M-1994 THIRD ANGLE PROJECTION	<b>APPROVALS</b>		 <b>LINEAR TECHNOLOGY</b> 1630 MCCARTHY BLVD MILPITAS, CA 95035 PH: (408)432-1900 www.linear.com LTC CONFIDENTIAL- FOR CUSTOMER USE ONLY	
	PCB DES.	KIM T.		
	APP ENG.	MITCHELL L.	TITLE: FABRICATION DRAWING	
			12V SURGE STOPPER WITH IDEAL DIODE	
SCALE = NONE		SIZE	IC NO.	REV
		N/A	LTC4364HDE-1/-2 DEMO CIRCUIT 2027A	1
FILENAME: DC2027A-1.PCB			SHT 1 OF 1	