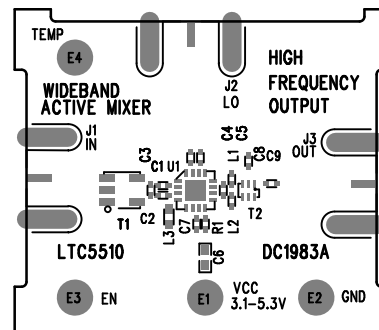


| REVISION HISTORY | | | | |
|------------------|-----|-------------|-----------|----------|
| ECO | REV | DESCRIPTION | APP. ENG. | DATE |
| - | 2 | PRODUCTION | SUNNY H. | 04-08-13 |

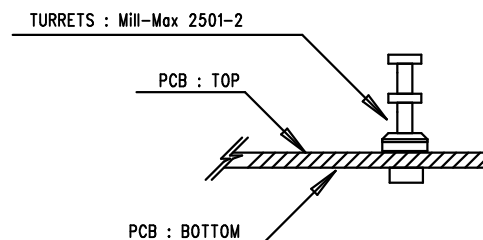
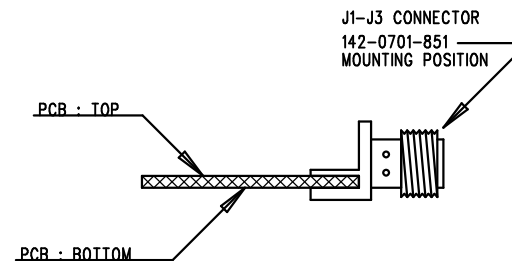
NOTES: UNLESS OTHERWISE SPECIFIED

1. WORKMANSHIP SHALL BE IN ACCORDANCE WITH IPC-A-610.
2. ASSEMBLY PROCESS SHALL INCLUDE: REFLOW SOLDER TOP SIDE SMD. MAXIMUM SOLDER TEMPERATURE IS 240 DEGREES CELSIUS.
3. PARTS TO OMIT WILL BE SPECIFIED ON THE BILL OF MATERIALS. LOCATIONS OF OMITTED PARTS SHALL BE FREE OF SOLDER. MASK THE SOLDER STENCIL WHERE SMT PARTS ARE OMITTED.
4. NO SHUNTS
5. DEPANELIZE BOARDS AFTER ASSEMBLY AND ROUTE-OUT THE BREAKOUT TABS ON FOUR SIDES OF THE BOARD EDGE.
6. DO NOT APPLY ANY KIND OF ASSEMBLY STAMP OR QA STAMP
7. INSTALL J1-J3 CONNECTORS AS SHOWN BELOW:



TOP SILKSCREEN

LINEAR TECHNOLOGY DATE: 04-08-2013
DC1983A-2 * LTC5510IUF
WIDEBAND ACTIVE MIXER HIGH FREQUENCY OUTPUT



APPROVALS

| | |
|----------|----------|
| PCB DES. | AK |
| APP ENG. | SUNNY H. |
| | |
| | |
| | |

SCALE = NONE



1630 MCCARTHY BLVD
MILPITAS, CA 95035
PH: (408)432-1900
www.linear.com
LTC CONFIDENTIAL-
FOR CUSTOMER USE ONLY

TITLE: TOP ASSEMBLY DRAWING
WIDEBAND ACTIVE MIXER
HIGH FREQUENCY OUTPUT

| | | |
|-------------|---|-----------|
| SIZE N/A | IC NO. LTC5510IUF DEMO CIRCUIT 1983A | REV. 2 |
|-------------|---|-----------|

FILENAME: DC1983A-2.PCB

SHT 1 OF 1