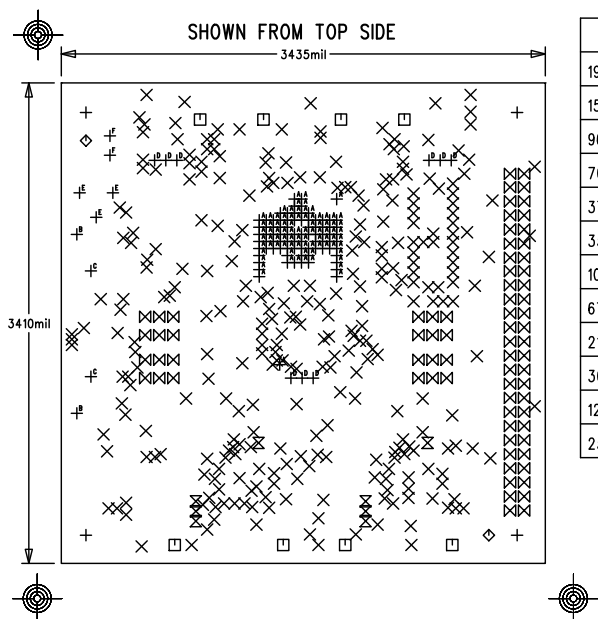
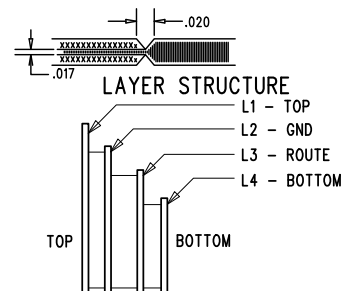



REVISION HISTORY				
ECO	REV	DESCRIPTION	APPROVED	DATE
-	4	4TH PROTOTYPE	KALIN L.	08-31-2011

NOTES: UNLESS OTHERWISE SPECIFIED

- FAB PER IPC-A-600.
- MATERIAL: -LEAD FREE ASSEMBLY COMPLIANT, ISOLA FR-370HR OR EQUIVALENT.
-FINISHED THICKNESS TO BE 0.062" +/- .005"
-TOTAL OF 4 LAYERS WITH 2 OZ. CU ON THE OUTER LAYERS AND 1 OZ. CU ON THE INNER LAYERS.
-FLAMMABILITY RATING: 94 V-0 MINIMUM.
- SIZE: CUT TO DIMENSIONS AND TOLERANCES SHOWN.
0.00" ARE PRIMARY DATUMS.
- DRILLING: -DRILL HOLES PER SCHEDULE. PLATE THROUGH HOLES WITH COPPER, 0.001" THICK MIN.
-ALL HOLE SIZES ARE SPECIFIED AFTER PLATING.
-HOLE LOCATION TOLERANCES ARE +/-0.003" IN RELATION TO CENTER
- FINISH: -ENIG USING LPI BOTH SIDES, COLOR GREEN.
-FOR SILKSCREENS: USE WHITE NON-CONDUCTIVE INK.
- DO NOT ALTER ARTWORK e.g. TO ADD LOGO OR DATE CODE.
PAD SIZE CAN BE MODIFIED TO MEET END FINISH.
- PCBS ARE TO BE RoHS COMPLIANT.
- SCORING FOR PANELIZED PCB (PRODUCTION FAB ONLY):



SIZE	QTY	SYM	PLATED	TOL
190	4	+	YES	+/-0.003
15	301	X	YES	+/-0.003
96	8	□	YES	+/-0.003
70	2	◇	NO	+/-0.003
37	8	⊗	YES	+/-0.003
35	74	⊗	YES	+/-0.003
10	83	⊕ ^A	YES	+/-0.003
67	2	⊕ ^B	YES	+/-0.003
210	2	⊕ ^C	YES	+/-0.003
30	9	⊕ ^D	YES	+/-0.003
120	3	⊕ ^E	YES	+/-0.003
25.59	2	⊕ ^F	YES	+/-0.003

APPROVALS		 LINEAR TECHNOLOGY		1630 MCCARTHY BLVD MILPITAS, CA 95035 PH: (408)432-1900 www.linear.com LTC CONFIDENTIAL- FOR CUSTOMER USE ONLY	
PCB DES.	S. M.	TITLE: FAB DRAWING QUAD DIGITAL POWER SUPPLY MANAGER			
APP ENG.	KALIN L.				
		SIZE N/A	IC NO. LTC2974CUP DEMO CIRCUIT 1810A	REV. 4	
SCALE = NONE		FILENAME: 1810A-4.PCB			SHT 1 OF 1