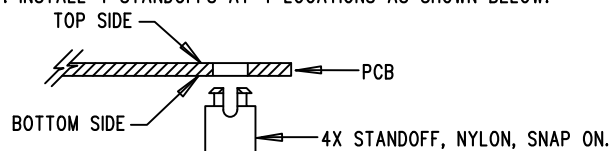


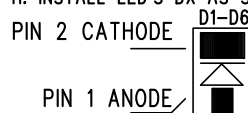
REVISION HISTORY				
ECO	REV	DESCRIPTION	DATE	APP. ENG.
-	4	4TH PROTOTYPE	08-26-2011	KALIN L.

NOTES: UNLESS OTHERWISE SPECIFIED

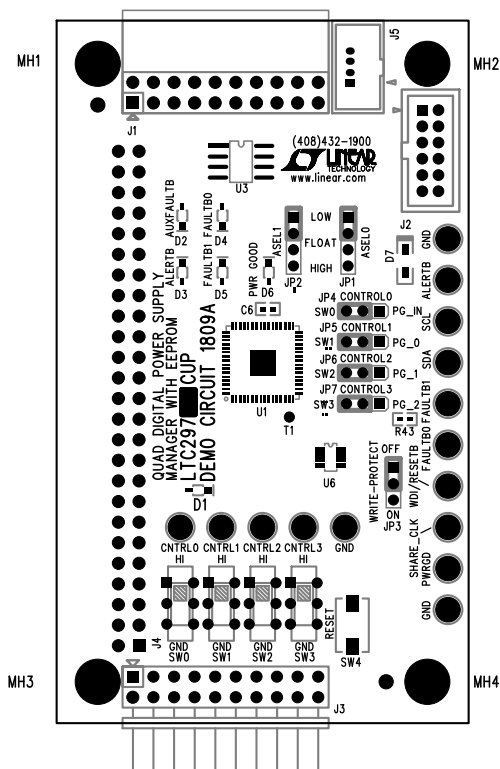
1. WORKMANSHIP SHALL BE IN ACCORDANCE WITH IPC-A-610.
2. ASSEMBLY PROCESS SHALL INCLUDE: REFLOW SOLDER TOP SIDE SMD. MAXIMUM SOLDER TEMPERATURE IS 240 DEGREES CELSIUS.
3. PARTS TO OMIT WILL BE SPECIFIED ON THE BILL OF MATERIALS. LOCATIONS OF OMITTED PARTS SHALL BE FREE OF SOLDER. MASK THE SOLDER STENCIL WHERE SMT PARTS ARE OMITTED.
4. INSTALL SHUNTS AS SHOWN ON ASSY DRAWING.
5. DEPANELIZE BOARDS AFTER ASSEMBLY AND ROUTE-OUT THE BREAKOUT TABS ON FOUR SIDES OF THE BOARD EDGE.
6. DO NOT APPLY ANY KIND OF ASSEMBLY STAMP OR QA STAMP TO ANY BOARD.
7. INSTALL 4 STANDOFFS AT 4 LOCATIONS AS SHOWN BELOW:




9. INSTALL SHUNTS AS SHOWN WITH THIS SYMBOL
10. SET SWITCHES TO DEFAULT SETTINGS SHOWN WITH THIS SYMBOL
11. INSTALL LED'S DX AS SHOWN BELOW:



ASSY	U1
-A	LTC2974CUP
-B	LTC2975CUP



APPROVALS		 <div> 1630 MCCARTHY BLVD MILPITAS, CA 95035 PH: (408)432-1900 www.linear.com LTC CONFIDENTIAL- FOR CUSTOMER USE ONLY </div>	
PCB DES.	S. M.		
APP ENG.	KALIN L.	TITLE: TOP ASSEMBLY DRAWING QUAD DIGITAL POWER SUPPLY MANAGER WITH EEPROM	
		SIZE N/A	REV. 4
SCALE = NONE		FILENAME:1809A-4.PCB SHT 1 OF 2	