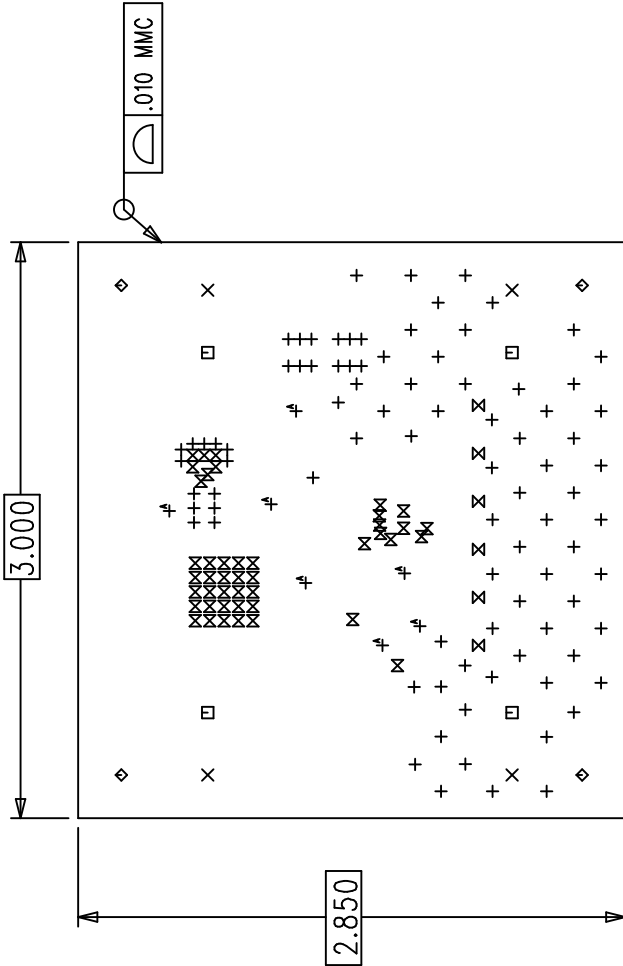


REVISION HISTORY			
ECO	REV	DESCRIPTION	APP. ENG.
-	1	PRODUCTION	MITCHELL LEE
			DATE
			11-11-11

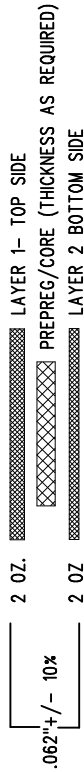
SHOWN FROM TOP SIDE





NOTES: UNLESS OTHERWISE SPECIFIED

1. FAB PER IPC-A-600.
2. MATERIAL: -LEAD FREE ASSEMBLY COMPLIANT, ISOLA FR-370HR OR EQUIVALENT.
 - FINISHED THICKNESS TO BE 0.062" \pm .005"
 - TOTAL OF 2 LAYERS. FINISHED COPPER PLATING SHALL BE 2 OZ.
 - FLAMMABILITY RATING: 94 V-0 MINIMUM.
3. SIZE: CUT TO DIMENSIONS AND TOLERANCES SHOWN.
4. DRILLING: -DRILL HOLES PER SCHEDULE. PLATE THROUGH HOLES WITH COPPER, 0.001" THICK MIN.
 - HOLE LOCATION TOLERANCES ARE \pm 0.003" IN RELATION TO CENTER
 - ALL HOLE SIZES ARE SPECIFIED AFTER PLATING.
5. FINISH: -SMOBC USING LPI BOTH SIDES, COLOR GREEN.
 - GOLD IMMERSION BOTH SIDES.
 - SILKSCREEN LEGENDS SHALL BE WHITE NON-CONDUCTIVE EPOXY INK.
6. DO NOT ALTER ARTWORK e.g. TO ADD LOGO OR DATE CODE. PAD SIZE CAN BE MODIFIED TO MEET END FINISH.
7. BOARDS SHALL BE RoHS COMPLIANT.
8. BOARDS SHALL BE PANELIZED USING ROUTE AND RETAIN METHOD.

FIG. 2 LAYER STRUCTURE



SIZE	QTY	SYM	PLATED	TOL
20	88	+	YES	\pm 0.003
95	4	X	YES	\pm 0.003
207	4	□	YES	\pm 0.003
188	4	◇	NO	\pm 0.003
65	6	⊗	YES	\pm 0.003
12	44	⊗	YES	\pm 0.003
25	7	⊕	YES	\pm 0.003

UNLESS OTHERWISE SPECIFIED		APPROVALS		<div> LINEAR TECHNOLOGY</div> <div>1630 MCCARTHY BLVD MILPITAS, CA 95035 PH: (408) 432-1900 www.linear.com LTC CONFIDENTIAL - FOR CUSTOMER USE ONLY</div>	
DIMENSIONS ARE IN INCHES					
TOLERANCES:		PCB DES.	M. HAWKINS		
0.XX" = \pm 0.01"		APP. ENG.	MITCHELL LEE		
0.XXX" = \pm 0.005"					
INTERPRET DIM AND TOL PER ASME Y14.5M-1994					
THIRD ANGLE PROJECTION					
					
		SCALE = NONE			
		SIZE	IC NO.	LT4363IDE-1,2	REV
		N/A		DEMO CIRCUIT 1935A	1
		FILENAME: DC1935A-1.PCB			SHT 1 OF 1