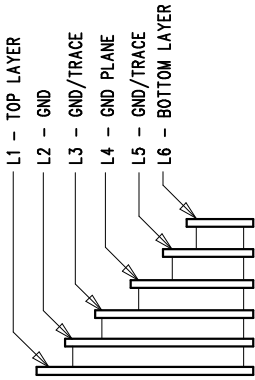


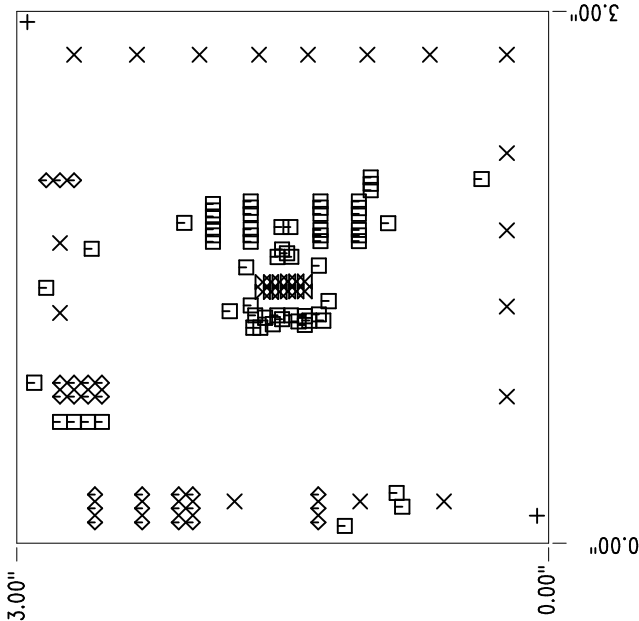
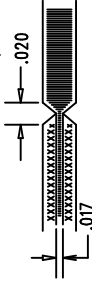
REVISION HISTORY			
ECO	REV	DESCRIPTION	APP. ENG. DATE
-	1	PRODUCTION	TOM G. 04-18-11

LAYER STRUCTURE



NOTES: UNLESS OTHERWISE SPECIFIED

1. FAB PER IPC-A-600.
2. MATERIAL: -LEAD FREE ASSEMBLY COMPLIANT, ISOLA FR-370HR OR EQUIVALENT.
  - FINISHED THICKNESS TO BE 0.062" +/- .005"
  - TOTAL OF 6 LAYERS WITH 2 OZ. CU ON THE OUTER LAYERS AND 1 OZ. CU ON THE INNER LAYERS.
  - FLAMMABILITY RATING: 94 V-0 MINIMUM.
3. SIZE: CUT TO DIMENSIONS AND TOLERANCES SHOWN.
  - 0.00" ARE PRIMARY DATUMS.
4. DRILLING: -DRILL HOLES PER SCHEDULE. PLATE THROUGH HOLES WITH COPPER, 0.001" THICK MIN.
  - ALL HOLE SIZES ARE SPECIFIED AFTER PLATING.
  - HOLE LOCATION TOLERANCES ARE +/-0.003" IN RELATION TO CENTER
5. FINISH: -SMOBC USING LPI BOTH SIDES, COLOR GREEN.
  - GOLD IMMERSION BOTH SIDES.
  - FOR SILKSCREENS: USE WHITE NON-CONDUCTIVE INK.
6. DO NOT ALTER ARTWORK e.g. TO ADD LOGO OR DATE CODE.
  - PAD SIZE CAN BE MODIFIED TO MEET END FINISH.
7. PCBs ARE TO BE RoHS COMPLIANT.
8. SCORING FOR PANELIZED PCB (PRODUCTION FAB ONLY):



SIZE	QTY	SYM	PLATED	TOL
0.07	2	+	NO	+/-0.003
0.09449	17	X	YES	+/-0.003
0.00984	65	□	YES	+/-0.003
0.03543	26	◇	YES	+/-0.003
0.02	12	⊗	YES	+/-0.003

UNLESS OTHERWISE SPECIFIED

DIMENSIONS ARE IN INCHES

TOLERANCES:  
0.XX" = ±0.01"  
0.XXX" = ±0.005"  
INTERPRET DIM AND TOL  
PER ASME Y14.5M-1994  
THIRD ANGLE PROJECTION

APPROVALS

PCB DES.	JW
APP ENG.	TOM G.
SCALE = NONE	

LINEAR TECHNOLOGY

1830 MCCARTHY BLVD  
FARMINGTON, CT 06030  
PH: (408) 432-1800  
WWW.LINEAR.COM  
LTC CONFIDENTIAL-  
FOR CUSTOMER USE ONLY

TITLE: FABRICATION DRAWING

DUAL DDR MONOLITHIC SYNCHRONOUS  
STEP-DOWN REGULATOR

SIZE	IC NO.	REV
N/A	LTC3634EFE	1

FILENAME: 1839A-1PCB

SHT 1 OF 1