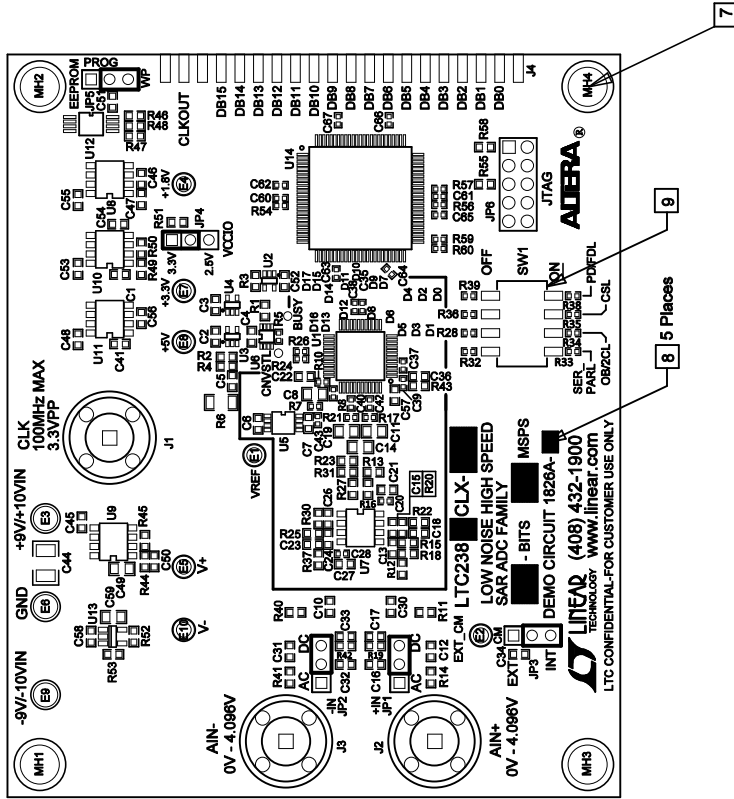
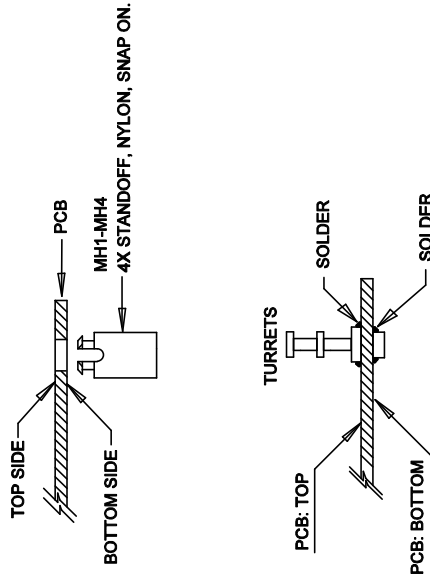


REVISION HISTORY			
ECO	REV	DESCRIPTION	APP. ENG.
	1	1ST PROTOTYPE	GUY H.
	2	2ND PROTOTYPE	GUY H.
	3	PRODUCTION	GUY H.

NOTES: UNLESS OTHERWISE SPECIFIED

1. WORKMANSHIP SHALL BE IN ACCORDANCE WITH IPC-A-810.
2. ASSEMBLY PROCESS SHALL INCLUDE: REFLOW SOLDER TOP SIDE SMD. MAXIMUM SOLDER TEMPERATURE IS 240 C.
3. PARTS TO OMIT WILL BE SPECIFIED ON THE BILL OF MATERIALS. LOCATIONS OF OMITTED PARTS SHALL BE FREE OF SOLDER. MASK THE SOLDER STENCIL WHERE SMT PARTS ARE OMITTED.
4. DEPANELIZE BOARDS AFTER ASSEMBLY AND ROUTE-OUT THE BREAKOUT TABS ON FOUR SIDES OF THE BOARD EDGE.
5. DO NOT APPLY ANY KIND OF ASSEMBLY STAMP OR QA STAMP TO ANY BOARD.
7. INSTALL 4 STANDOFFS AT 4 LOCATIONS AS SHOWN BELOW:



8. MARK EACH LTC PART NUMBER AND ASSEMBLY TYPE WITH BLACK PERMANENT MARKER AS SHOWN IN TABLE BELOW:

ASSY	U1	Bits	Mbps	R60
DC1828A-A	LTC2388CLX-18	18	2.5	301
DC1828A-B	LTC2388CLX-18	18	1	301
DC1828A-C	LTC2387CLX-18	18	0.5	301
DC1828A-D	LTC2386CLX-18	18	0.25	301
DC1828A-E	LTC2389CLX-16	16	2.5	—
DC1828A-F	LTC2388CLX-16	16	1	—
DC1828A-G	LTC2387CLX-16	16	0.5	—
DC1828A-H	LTC2386CLX-16	16	0.25	—

9. SW1 DEFAULT SETUP:
SET LOW FOR: SER_PARL; OB2/CL; CSL; PD/FDL.

APPROVALS		LINEAR TECHNOLOGY		TITLE: TOP ASSEMBLY DRAWING	
PCB DES.	RB	1830 MCCARTHY BLVD MILPITAS, CA 95035 PH: (408) 432-1900 WWW.LINEAR.COM LTC CONFIDENTIAL - FOR CUSTOMER USE ONLY		LOW NOISE HIGH SPEED SAR ADC FAMILY	
APP ENG.	GUY H.				
SCALE = NONE		SIZE		IC NO. LTC238XCLX FAMILY	
		N/A		1826A Rev3.PCB	
		FILENAME: 1826A Rev3.PCB		REV. 3	
				SHT 1 OF 2	