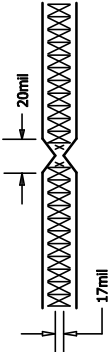


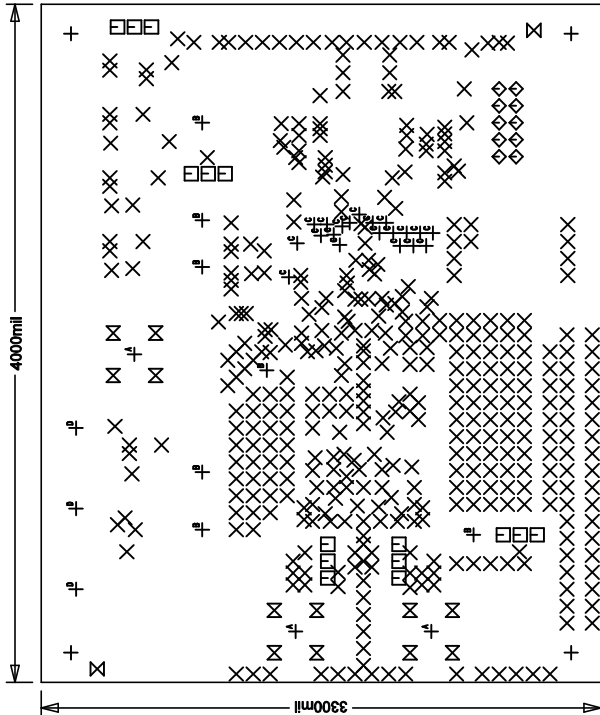
REVISION HISTORY			
ECO REV	DESCRIPTION	APP. ENG.	DATE
1	1ST PROTOTYPE	GUY H.	05/16/11
2	2ND PROTOTYPE	GUY H.	09/28/11
3	PRODUCTION	GUY H.	01/12/12

NOTES: UNLESS OTHERWISE SPECIFIED

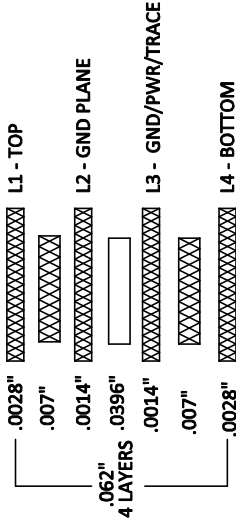
1. FAB PER IPC-A-600.
2. MATERIAL: -LEAD FREE ASSEMBLY COMPLIANT, ISOLA FR-370HR OR EQUIVALENT.
2 OZ. COPPER FINISH ON EXTERNAL LAYER.
1 OZ. COPPER FINISH ON INTERNAL LAYERS.
THICKNESS .080 +/- .005 TOTAL OF 4 LAYERS.
FLAMMABILITY RATING: 94 V-0 MINIMUM .
0.00 ARE PRIMARY DATUMS.
3. SIZE: DIMENSIONS SHOWN AND TOLERANCES +/-0.010
4. DRILLING: DRILL HOLES PER SCHEDULE. PLATE THROUGH HOLES WITH COPPER, .001 INCH THICK MIN. ALL HOLE SIZES ARE SPECIFIED AFTER PLATING.
HOLE LOCATION TOLERANCES ARE +/-3mil
INCH IN RELATION TO CENTER
5. FINISH: SMOBC USING LPI BOTH SIDES COLOR GREEN.
GOLD IMMERSION BOTH SIDES.
6. SILKSCREEN : USING WHITE NON-CONDUCTIVE EPOXY INK.
7. DO NOT ALTER ARTWORK TO ADD LOGO OR DATE CODE BUT YOU MAY MODIFY PAD SIZE TO MEET END FINISH.
8. PCB's SHALL BE RoHS COMPLIANT.
9. SCORING: FOR PANELIZED FABRICATION ONLY



SIZE	QTY	SYM	PLATED	TOL
187	4	+	YES	+/-3Mils
10	442	X	YES	+/-3Mils
39	15	□	YES	+/-3Mil
35	10	◇	YES	+/-3Mils
70	2	⊗	NO	+/-3Mils
52	12	⊗	YES	+/-3Mil
59	3	⊕	YES	+/-3Mils
65	7	⊕	YES	+/-3Mils
20	20	⊕	YES	+/-3Mils
94	3	⊕	YES	+/-3Mils



LAYER STRUCTURE



UNLESS OTHERWISE SPECIFIED
DIMENSIONS ARE IN INCHES
TOLERANCES:
0.XX = .001
0.XXX = .0005
INTERPRET DIM AND TOL
PER ASME Y14.5M-1994
THIRD ANGLE PROJECTION

APPROVALS

PCB DES. RB
APP ENG. GUY H.

SCALE = NONE

1830 MCCARTHY BLVD
MILPITAS, CA 95036
PH: (408) 252-7600
FAX: (408) 252-7601
LTC CONFIDENTIAL
FOR CUSTOMER USE ONLY

TECHNOLOGY

TITLE: FABRICATION DRAWING

LOW NOISE HIGH SPEED SAR ADC FAMILY

SIZE N/A
IC NO. LTC238XCLX FAMILY
REV 3

FILENAME: 1826A Rev3 PCB
SHT 1 OF 1