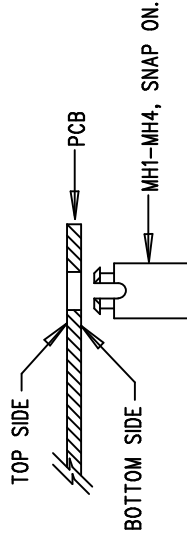


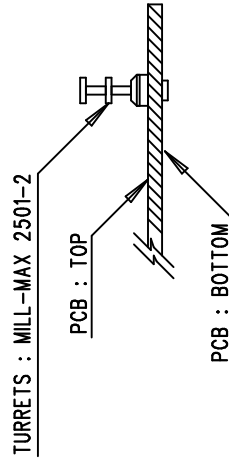
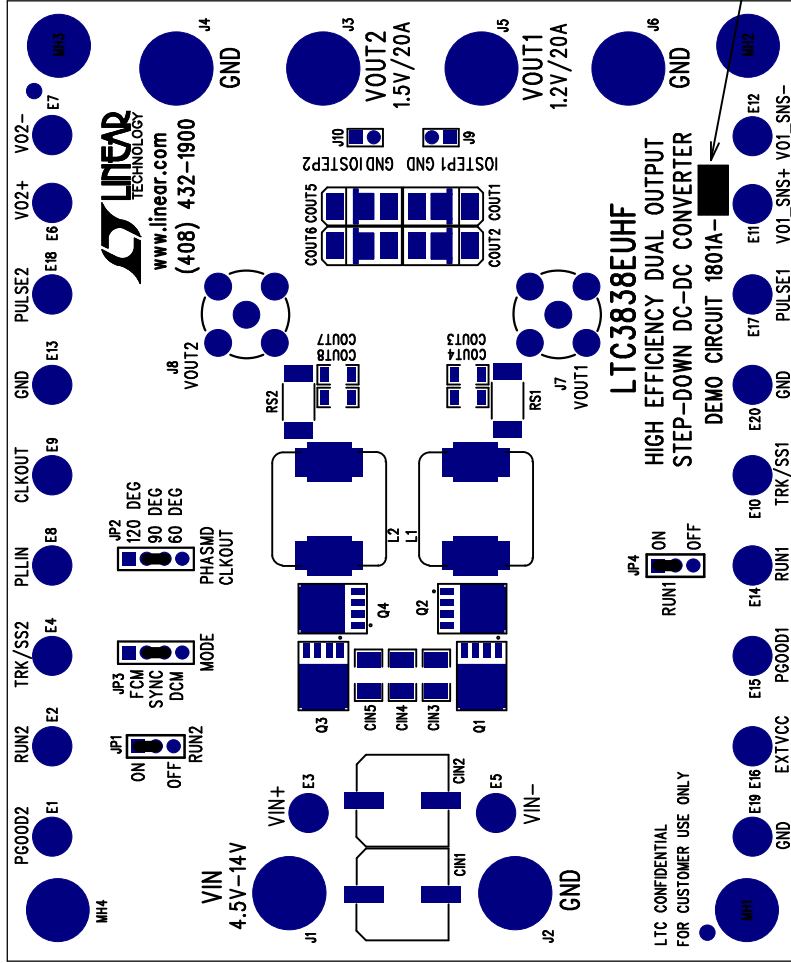
REVISION HISTORY			
ECO	REV	DESCRIPTION	APP. ENG.
-	1	PRODUCTION	DING L.
			DATE
			10-12-11

NOTES: UNLESS OTHERWISE SPECIFIED

1. WORKMANSHIP SHALL BE IN ACCORDANCE WITH IPC-A-610.
2. ASSEMBLY PROCESS SHALL INCLUDE: REFLOW SOLDER TOP SIDE SMD. MAXIMUM SOLDER TEMPERATURE IS 240 DEGREES CELSIUS.
3. PARTS TO OMIT WILL BE SPECIFIED ON THE BILL OF MATERIALS. LOCATIONS OF OMITTED PARTS SHALL BE FREE OF SOLDER. MASK THE SOLDER STENCIL WHERE SMT PARTS ARE OMITTED.
4. INSTALL SHUNTS AS SHOWN ON ASSY DRAWING.
5. DEPANELIZE BOARDS AFTER ASSEMBLY AND ROUTE-OUT THE BREAKOUT TABS ON FOUR SIDES OF THE BOARD EDGE.
6. DO NOT APPLY ANY KIND OF ASSEMBLY STAMP OR QA STAMP TO ANY BOARD.
7. INSTALL 4 STANDOFFS AT 4 LOCATIONS AS SHOWN BELOW:



MARK VERSION PER BOM



APPROVALS		LTC3838EUHF		1801A-1.PCB	
PCB DES.	JW	SIZE	IC NO.	REV.	
APP ENG.	DING L.	N/A	LTC3838EUHF	1	
		TITLE: TOP ASSEMBLY DRAWING		SHT 1 OF 1	
		HIGH EFFICIENCY DUAL OUTPUT		FILENAME:	
		STEP-DOWN DC-DC CONVERTER		1801A-1.PCB	
				DEMO CIRCUIT 1801A	
				SCALE = NONE	