

REVISION HISTORY			
ECO	REV	DESCRIPTION	APPROVAL
	2	PRODUCTION	ZHONGMING Y.
			DATE
			08/04/11

NOTES: UNLESS OTHERWISE SPECIFIED,

1. ARTWORK P/N DC1725A REV 2.
2. FAB PER IPC-A-600
3. PCB SHALL BE RoHS COMPLIANT.
4. MATERIAL:

A. LAMINATE: EPOXY FIBERGLASS, NEMA GRADE FR-4
FLAMMABILITY RATING: 94 V-2 MINIMUM .

B. THICKNESS: 1.6 +/- 0.12 mm

C. CLAD: 2 OZ. (25um) EXTERNAL LAYERS.
1 OZ. (25um) COPPER ON INTERNAL LAYERS.
5. FINISH:

A. COATING: SOLDERMASK OVER BARE COPPER,
COLOR, GREEN LPI.

B. PLATING: GOLD IMMERSION BOTH SIDES.

C. SILKSCREEN: BOTH SIDES WITH WHITE NON-
CONDUCTIVE INK.
6. TOLERANCES:

A. WARPAGE: (0.075mm) MAX. ALONG THE LONGEST DIAG.
AS PER IPC-TM650 METHOD 2.4.22.

B. ETCHING: +0.03mm, -0.3mm OF MASTER PATTERN.

C. REGISTRATION: 0.075mm MAX.

D. MASK THICKNESS: 0.025mm MIN., 0.075mm MAX.

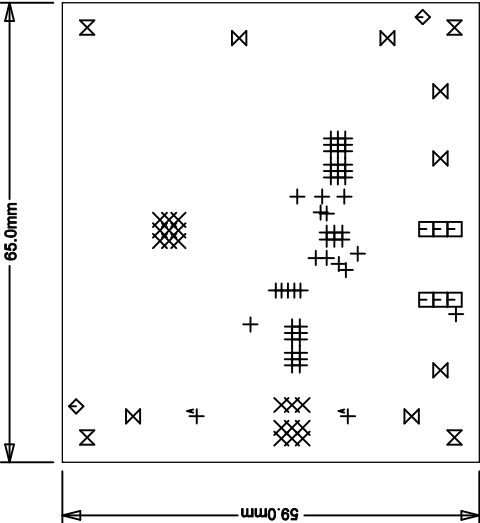
E. HOLE PLATING: 22um +/- 3um.
7. SIZE:

A. CUT TO DIMENSIONS AND TOLERANCES SHOWN.
0.00 ARE PRIMARY DATUMS.

8. HOLE DIAMETERS ARE POST-PLATED SIZES.

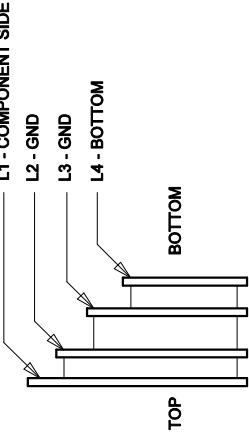
9. DEBURR AND BREAK ALL SHARP EDGES.

10. DO NOT ALTER ARTWORK e.g. TO ADD LOGO OR DATE CODE.



L1-COMPONENT SIDE

SIZE	QTY	SYM	PLATED	TOL
0.25	53	+	YES	+/-0.08
0.5	18	X	YES	+/-0.08
0.78	6	□	YES	+/-0.08
1.78	2	◇	NO	+/-0.13
2.41	7	⊗	YES	+/-0.13
4.75	4	⊗	NO	+/-0.13
5.21	2	⊕	YES	+/-0.13



LAYER STRUCTURE

UNLESS OTHERWISE SPECIFIED
DIMENSIONS ARE IN MILLIMETERS
TOLERANCES ON ANGLE +/-1°
XX +/-0.25
XXX +/-0.127
INTERPRET DIM AND TOL
PER ASME Y14.5M-1994
THIRD ANGLE PROJECTION

DO NOT SCALE DRAWING

APPROVALS

PCB DES. MI

APP. ENG. ZHONGMING Y.

SCALE: NONE

1630 MCCARTHY BLVD
MILPITAS, CA 95035
TEL: 408.352.2600
WWW.LINEAR-TECH.COM
LTC CONFIDENTIAL-
FOR CUSTOMER USE ONLY

TITLE: FABRICATION DRAWING
LOW INPUT VOLTAGE BOOST
CONVERTER

IC NO. LT3759EMSE
PCB NO. DEMO CIRCUIT 1725A
REV 2

FILENAME: 1725A-2.PCB
SHT 1 of 1