

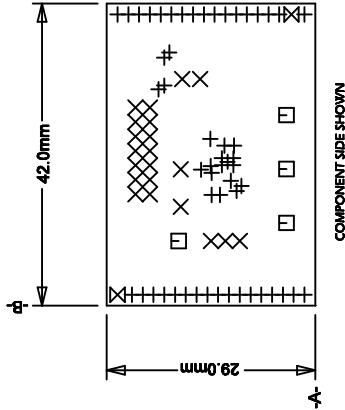
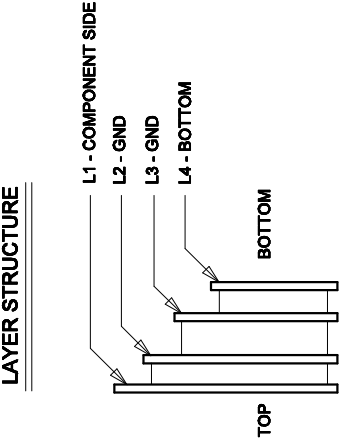
REVISION HISTORY			
ECO	REV	DESCRIPTION	APPROVAL
	1	FIRST PROTOTYPE	LEO C.
			09/04/10

NOTES: UNLESS OTHERWISE SPECIFIED,

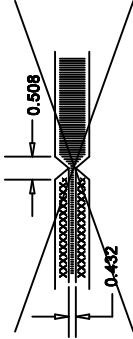
1. FAB PER IPC-A-800
2. MATERIAL: -EPOXY FIBERGLASS, NEMA GRADE FR-4
 -FINISHED THICKNESS TO BE 1.8 +/- 0.127
 -TOTAL OF 4 LAYERS WITH 2 OZ. CU ON THE OUTER LAYERS AND 1 OZ. CU ON THE INNER LAYERS.
 -FLAMMABILITY RATING: 94 V-0 MINIMUM .
 -CUT TO DIMENSIONS AND TOLERANCES SHOWN. 0.00" ARE PRIMARY DATUMS.
3. SIZE: DRILL HOLES PER SCHEDULE PLATE THROUGH HOLES WITH COPPER, 0.0254 THICK MIN. ALL HOLE SIZES ARE SPECIFIED AFTER PLATING. HOLE LOCATION TOLERANCES ARE +/-0.0762 IN RELATION TO CENTER
4. FINISH: -SMOBC USING LPI BOTH SIDES, COLOR GREEN.
 -GOLD IMMERSION BOTH SIDES.
 -SILKSCREEN BOTH SIDES WITH WHITE NON-CONDUCTIVE INK.
6. DO NOT ALTER ARTWORK e.g. TO ADD LOGO OR DATE CODE.
 PAD SIZE CAN BE MODIFIED TO MEET END FINISH.
7. PCB SHALL BE RoHS COMPLIANT.

~~SCORING~~

LAYER STRUCTURE



SIZE	QTY	SYM	PLATED	TOL
0.25	54	+	YES	+/-0.08
0.9	21	X	YES	+/-0.08
1.6	4	□	YES	+/-0.13
1.8	2	⊗	NO	+/-0.13



<div> <div> <div>1600 LOCANTY RD</div> <div>MILPITAS CA 95035</div> <div>PH: (408)352-1800</div> <div>WWW.LINEAR.COM</div> </div> <div> <div>LTC CONFIDENTIAL</div> <div>FOR CUSTOMER USE ONLY</div> </div> </div>		<div> <div> <div>LINEAR</div> <div>TECHNOLOGY</div> </div> </div>		<div> <div>1600 LOCANTY RD</div> <div>MILPITAS CA 95035</div> <div>PH: (408)352-1800</div> <div>WWW.LINEAR.COM</div> </div>	
		<div> <div> <div>APPROVALS</div> <div>PCB DES. MI</div> <div>APP. ENG. LEO C.</div> </div> </div>		<div> <div> <div>TITLE: FABRICATION DRAWING.</div> <div>16-BIT DELTA SIGMA I2C ADC</div> </div> </div>	
<div> <div>UNLESS OTHERWISE SPECIFIED</div> <div>DIMENSIONS ARE IN MILLIMETERS</div> <div>TOLERANCES ON ANGLE ±1°</div> </div>		<div> <div> <div>SIZE</div> <div>IC NO</div> <div>REV</div> </div> </div>		<div> <div> <div>FILENAME: 1718a-1.PCB</div> <div>SHT 1 of 1</div> </div> </div>	
<div> <div> <div>XX ± 0.25</div> <div>XX ± 0.127</div> <div>INTERPRET DIM AND TOL PER ASME Y14.5M-1994</div> </div> </div>		<div> <div> <div>SIZE</div> <div>IC NO</div> <div>REV</div> </div> </div>		<div> <div> <div>FILENAME: 1718a-1.PCB</div> <div>SHT 1 of 1</div> </div> </div>	
<div> <div> <div>THIRD ANGLE PROJECTION</div> <div> <div>⊕</div> <div>⊖</div> </div> </div> </div>		<div> <div> <div>DO NOT SCALE DRAWING</div> <div>SCALE: NONE</div> </div> </div>		<div> <div> <div>DO NOT SCALE DRAWING</div> <div>SCALE: NONE</div> </div> </div>	