

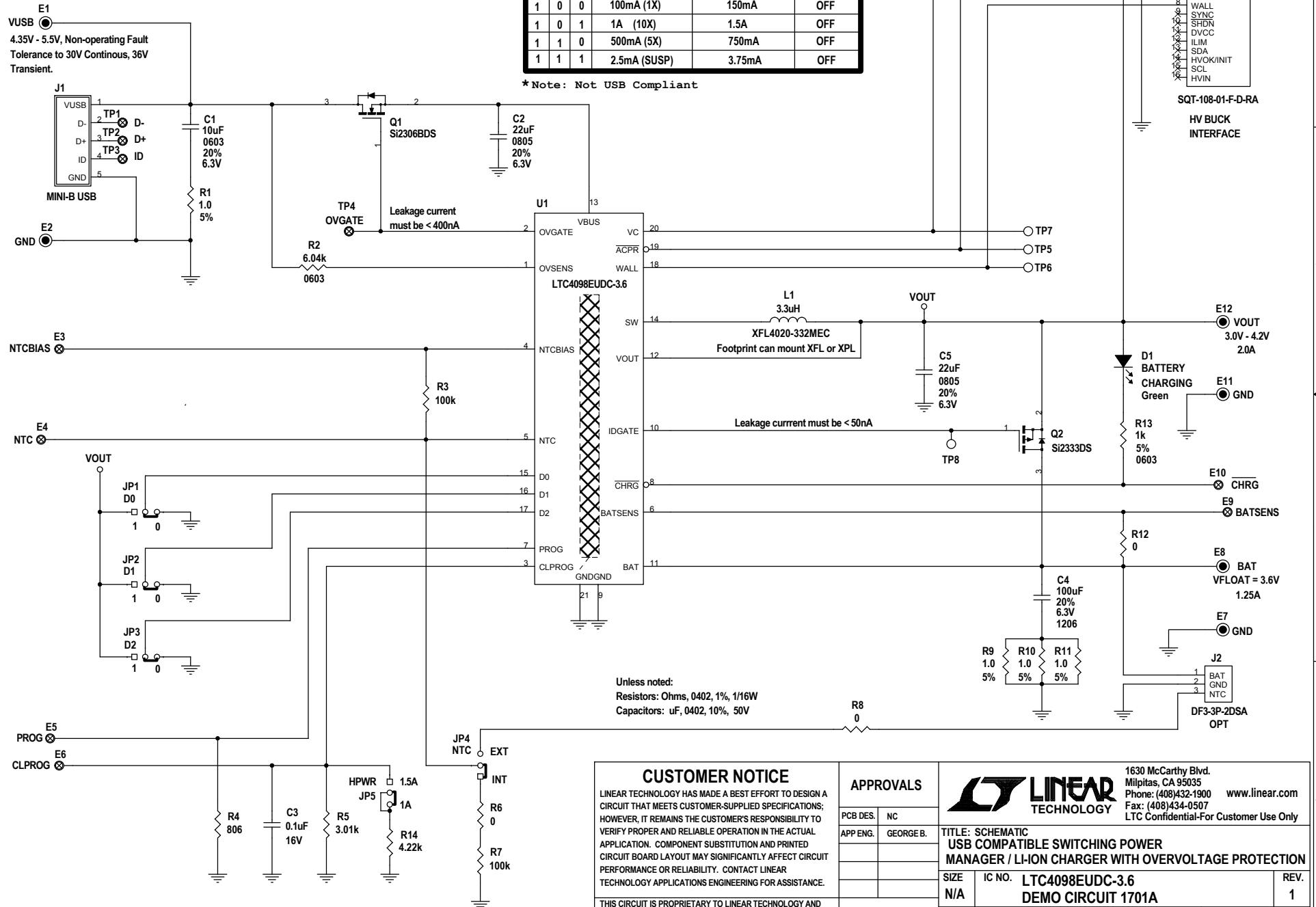
INPUT CURRENT LIMIT SETTINGS

D2	D1	D0	Input Limit Current JP5 (HPWR) = 1A	Input Limit Current JP5 (HPWR) = 1.5A *	CHARGER STATUS
0	0	0	100mA (1X)	150mA	ON
0	0	1	1A (10X)	1.5A	ON
0	1	0	500mA (5X)	750mA	ON
0	1	1	500uA (SUSP)	750uA	OFF
1	0	0	100mA (1X)	150mA	OFF
1	0	1	1A (10X)	1.5A	OFF
1	1	0	500mA (5X)	750mA	OFF
1	1	1	2.5mA (SUSP)	3.75mA	OFF

* Note: Not USB Compliant

REVISION HISTORY

ECO	REV	DESCRIPTION	APPROVED	DATE
—	1	PRODUCTION FAB	GEORGE B.	05-06-10



CUSTOMER NOTICE

LINEAR TECHNOLOGY HAS MADE A BEST EFFORT TO DESIGN A CIRCUIT THAT MEETS CUSTOMER-SUPPLIED SPECIFICATIONS; HOWEVER, IT REMAINS THE CUSTOMER'S RESPONSIBILITY TO VERIFY PROPER AND RELIABLE OPERATION IN THE ACTUAL APPLICATION. COMPONENT SUBSTITUTION AND PRINTED CIRCUIT BOARD LAYOUT MAY SIGNIFICANTLY AFFECT CIRCUIT PERFORMANCE OR RELIABILITY. CONTACT LINEAR TECHNOLOGY APPLICATIONS ENGINEERING FOR ASSISTANCE.

THIS CIRCUIT IS PROPRIETARY TO LINEAR TECHNOLOGY AND SUPPLIED FOR USE WITH LINEAR TECHNOLOGY PARTS.

APPROVALS

PCB DES.	NC
APP ENG.	GEORGE B.
SCALE	NONE



1630 McCarthy Blvd.
Milpitas, CA 95035
Phone: (408)432-1900 www.linear.com
Fax: (408)434-0507
LTC Confidential-For Customer Use Only

TITLE: SCHEMATIC
USB COMPATIBLE SWITCHING POWER
MANAGER / LI-ION CHARGER WITH OVERVOLTAGE PROTECTION

SIZE N/A IC NO. LTC4098EUDC-3.6
REV. 1

DATE: Thursday, June 03, 2010 SHEET 1 OF 1