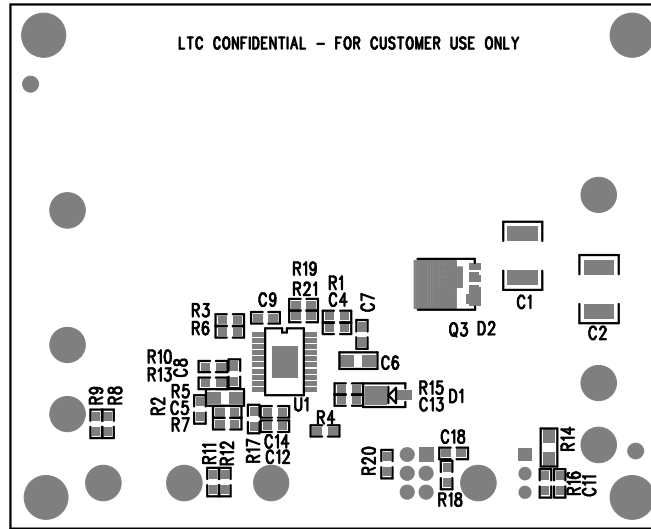


LTC CONFIDENTIAL - FOR CUSTOMER USE ONLY



DATE: 08-02-15
 STEP-DOWN CONVERTER
 LOW QUIESCENT CURRENT HIGH VOLTAGE
 DC1695B-1-LT3891EFE
 LINEAR TECHNOLOGY
 SILKSCREEN BOTTOM

APPROVALS

PCB DES.	AK
APP ENG.	VICTOR K
SCALE = NONE	



**LINEAR
TECHNOLOGY**

1630 MCCARTHY BLVD
 MILPITAS, CA 95035
 PH: (408)432-1900
 www.linear.com
 LTC CONFIDENTIAL-
 FOR CUSTOMER USE ONLY

TITLE: BOTTOM ASSEMBLY DRAWING

LOW QUIESCENT CURRENT HIGH VOLTAGE
 STEP-DOWN CONVERTER

SIZE N/A	IC NO. LT3891EFE DEMO CIRCUIT 1695B	REV 1
-------------	----------------------------------------	----------

FILENAME: DC1695B-1.PCB SHT 2 of 2