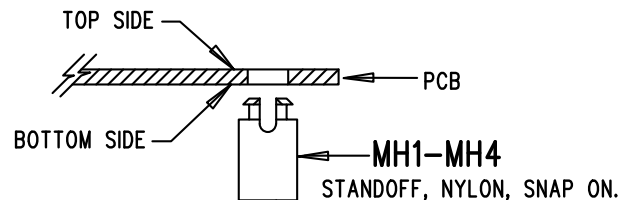
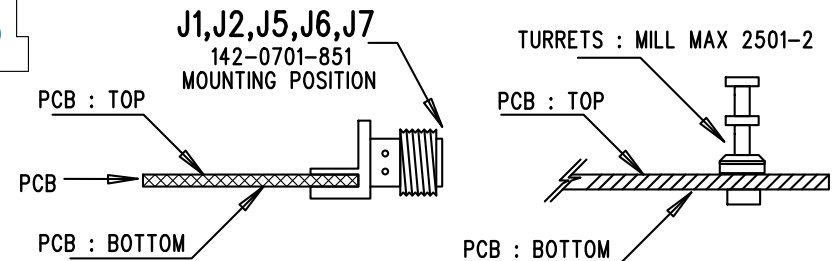


REVISION HISTORY			
ECO	REV	DESCRIPTION	APP. ENG. DATE
-	4	PRODUCTION	MICHEL A. 09-30-11

NOTES: UNLESS OTHERWISE SPECIFIED

1. WORKMANSHIP SHALL BE IN ACCORDANCE WITH IPC-A-610.
2. ASSEMBLY PROCESS SHALL INCLUDE: REFLOW SOLDER TOP SIDE SMD. MAXIMUM SOLDER TEMPERATURE IS 240 DEGREES CELSIUS.
3. PARTS TO OMIT WILL BE SPECIFIED ON THE BILL OF MATERIALS. LOCATIONS OF OMITTED PARTS SHALL BE FREE OF SOLDER. MASK THE SOLDER STENCIL WHERE SMT PARTS ARE OMITTED.
4. INSTALL SHUNTS AS SHOWN ON ASSY DRAWING.
5. DEPANELIZE BOARDS AFTER ASSEMBLY AND ROUTE-OUT THE BREAKOUT TABS ON FOUR SIDES OF THE BOARD EDGE.
6. DO NOT APPLY ANY KIND OF ASSEMBLY STAMP OR QA STAMP TO ANY BOARD.
7. FOR D1, INSTALL AS SHOWN BELOW:



8. MARK EACH ASSEMBLY TYPE AND VCO RANGE WITH BLACK PERMANENT MARKER AS SHOWN IN TABLE BELOW:

ASSY	VCO
-A	902 - 928 MHz

APPROVALS

PCB DES.	KIM T.
APP ENG.	MICHEL A.

SCALE = NONE



1630 MCCARTHY BLVD
MILPITAS, CA 95035
PH: (408)432-1900
www.linear.com
LTC CONFIDENTIAL-
FOR CUSTOMER USE ONLY

TITLE: TOP ASSEMBLY DRAWING
ULTRALOW NOISE AND SPURIOUS
INTEGER-N SYNTHESIZER

SIZE	IC NO. LTC6945IUFD	REV.
N/A	DEMO CIRCUIT 1649A	4

FILENAME: DC1649A-4.PCB

SHT 1 OF 2

