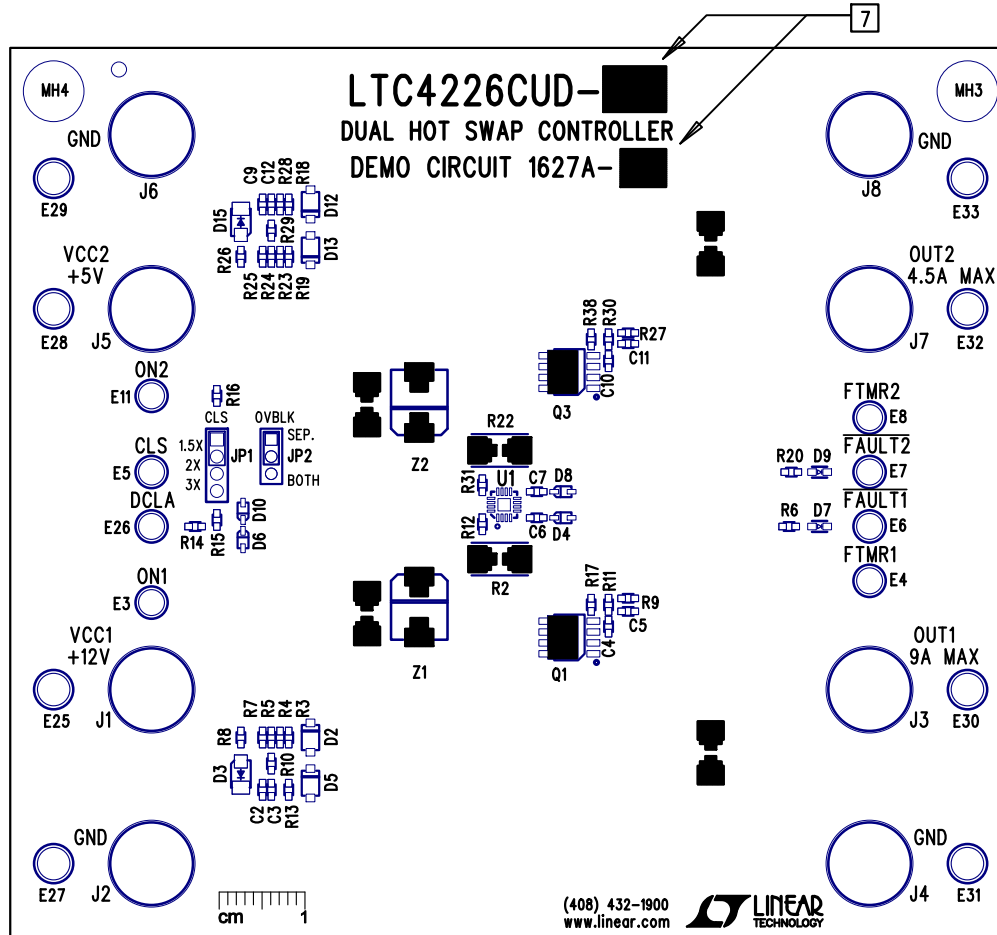


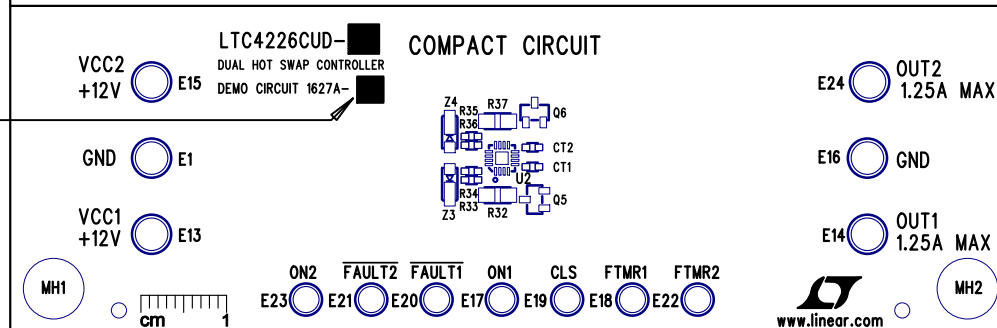
REVISION HISTORY				
ECO	REV	DESCRIPTION	APP. ENG.	DATE
-	3	PRODUCTION	VLADIMIR O.	08-08-12




NOTES: UNLESS OTHERWISE SPECIFIED

1. WORKMANSHIP SHALL BE IN ACCORDANCE WITH IPC-A-610.
2. ASSEMBLY PROCESS SHALL INCLUDE: REFLOW SOLDER TOP SIDE SMD. MAXIMUM SOLDER TEMPERATURE IS 240 DEGREES CELSIUS.
3. PARTS TO OMIT WILL BE SPECIFIED ON THE BILL OF MATERIALS. LOCATIONS OF OMITTED PARTS SHALL BE FREE OF SOLDER. MASK THE SOLDER STENCIL WHERE SMT PARTS ARE OMITTED.
4. INSTALL SHUNTS AS SHOWN ON ASSY DRAWING.
5. DEPANELIZE BOARDS AFTER ASSEMBLY AND ROUTE-OUT THE BREAKOUT TABS ON FOUR SIDES OF THE BOARD EDGE.
6. DO NOT APPLY ANY KIND OF ASSEMBLY STAMP OR QA STAMP TO ANY BOARD.
7. MARK EACH LTC PART NUMBER AND ASSEMBLY TYPE WITH BLACK PERMANENT MARKER AS SHOWN IN TABLE BELOW.
TOP AND BOTTOM CIRCUITS SHOULD HAVE THE SAME ASSEMBLY VERSION AND IC PART NUMBER.

ASSY	U1 / U2
-A	LTC4226CUD-1
-B	LTC4226CUD-2



APPROVALS		 1630 MCCARTHY BLVD MILPITAS, CA 95035 PH: (408)432-1900 www.linear.com LTC CONFIDENTIAL- FOR CUSTOMER USE ONLY	
PCB DES.	KIM T.		
APP ENG.	VLADIMIR O.	TITLE: TOP ASSEMBLY DRAWING	
		DUAL HOT SWAP CONTROLLER	
		SIZE N/A	REV. 3
SCALE = NONE		IC NO. LTC4226CUD-1/-2 DEMO CIRCUIT 1627A	
FILENAME: DC1627A-3.PCB		SHT 1 OF 2	